

VISION 2020 FACTSHEET



**HIGHWAYS FORECASTING AND
ANALYTICAL SERVICES**

BOLTON KSI CASUALTY STATISTICS

Latest 12 Months Data October 2011 to September 2012

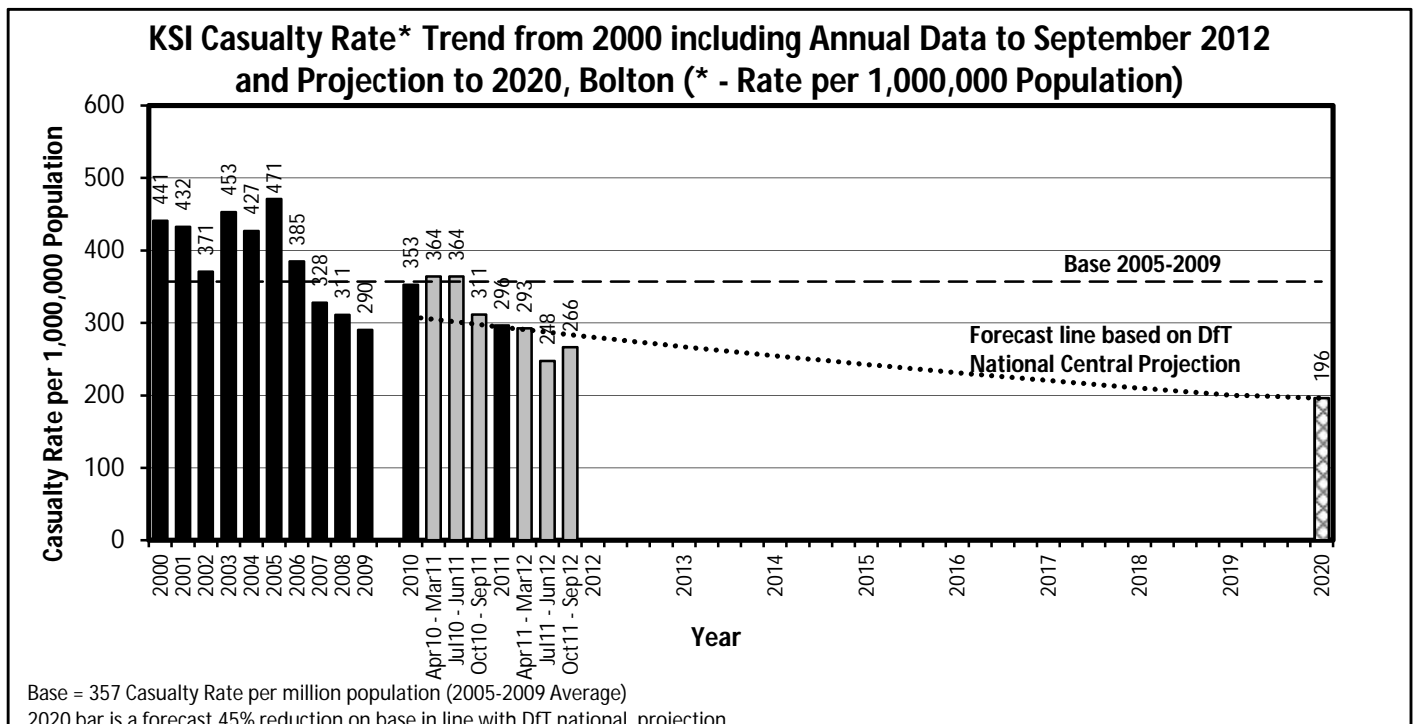
KSI Casualty Rates: Casualty Rate Trend 2000 - September 2012 and Projection to 2020

The table shows Bolton KSI casualty rates* from 2000 - September 2012 and forecast casualty reductions based on the DFT National Central Projection as outlined in the Strategic Framework for Road Safety. (*based on ONS population projections).

KSI Casualty Rate Trend 2000 - September 2012 and Projection to 2020				
Year	KSI Casualty Totals**		Index	
	Actual	Projection	Actual	Projection
2000	441			
2001	432			
2002	371			
2003	453			
2004	427			
2005	471			
2006	385			
2007	328			
2008	311			
2009	290			
2005-2009 Baseline	357		100	
2010	353	309	99	86
2011	296	294	83	82
Apr 2011-Mar 2012	293	291	82	81
Jul 2011-Jun 2012	248	287	69	80
Oct 2011-Sep 2012	266	284	75	79
2012		280		78
2013		267		75
2014		255		71
2015		243		68
2016		231		65
2017		221		62
2018		210		59
2019		200		56
2020		196		55

Notes: ** - KSI rates per 1,000,000 population

Index is based on 2005-2009 average



VISION 2020 FACTSHEET



**HIGHWAYS FORECASTING AND
ANALYTICAL SERVICES**

BURY KSI CASUALTY STATISTICS

Latest 12 Months Data October 2011 to September 2012

KSI Casualty Rates: Casualty Rate Trend 2000 - September 2012 and Projection to 2020

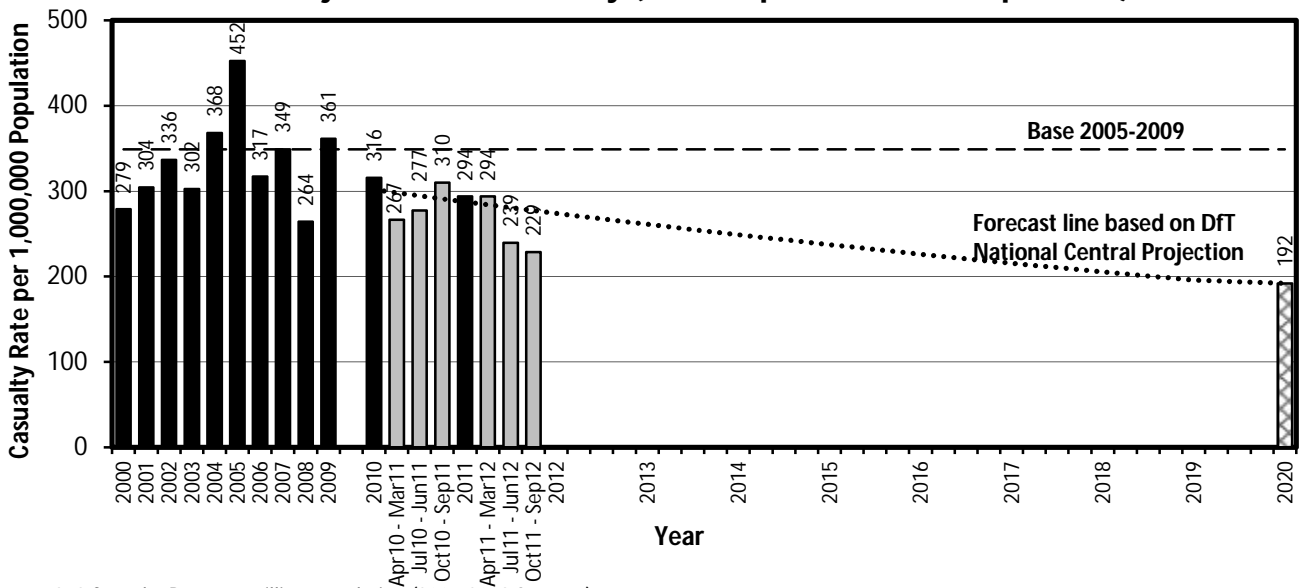
The table shows Bury KSI casualty rates* from 2000 - September 2012 and forecast casualty reductions based on the DFT National Central Projection as outlined in the Strategic Framework for Road Safety. (*based on ONS population projections).

KSI Casualty Rate Trend 2000 - September 2012 and Projection to 2020				
Year	KSI Casualty Totals**		Index	
	Actual	Projection	Actual	Projection
2000	279			
2001	304			
2002	336			
2003	302			
2004	368			
2005	452			
2006	317			
2007	349			
2008	264			
2009	361			
2005-2009 Baseline	349		100	
2010	316	302	90	86
2011	294	287	84	82
Apr 2011-Mar 2012	294	284	84	81
Jul 2011-Jun 2012	239	281	69	80
Oct 2011-Sep 2012	229	277	65	79
2012		274		78
2013		261		75
2014		249		71
2015		237		68
2016		226		65
2017		216		62
2018		205		59
2019		196		56
2020		192		55

Notes: ** - KSI rates per 1,000,000 population

Index is based on 2005-2009 average

KSI Casualty Rate* Trend from 2000 including Annual Data to September 2012 and Projection to 2020, Bury (* - Rate per 1,000,000 Population)



Base = 349 Casualty Rate per million population (2005-2009 Average)

2020 bar is a forecast 45% reduction on base in line with DFT national projection

VISION 2020 FACTSHEET



**HIGHWAYS FORECASTING AND
ANALYTICAL SERVICES**

MANCHESTER KSI CASUALTY STATISTICS

Latest 12 Months Data October 2011 to September 2012

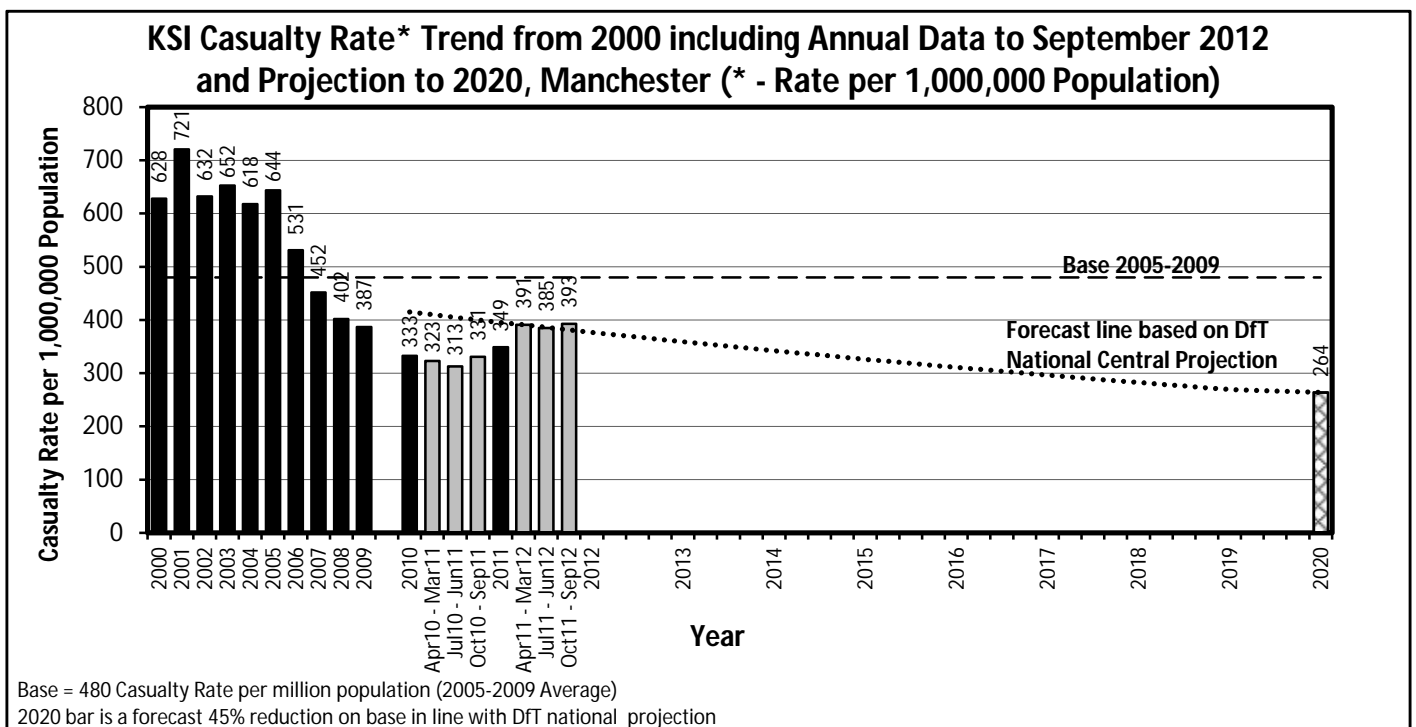
KSI Casualty Rates: Casualty Rate Trend 2000 - September 2012 and Projection to 2020

The table shows Manchester KSI casualty rates* from 2000 - September 2012 and forecast casualty reductions based on the DfT National Central Projection as outlined in the Strategic Framework for Road Safety. (*based on ONS population projections).

KSI Casualty Rate Trend 2000 - September 2012 and Projection to 2020				
Year	KSI Casualty Totals**		Index	
	Actual	Projection	Actual	Projection
2000	628			
2001	721			
2002	632			
2003	652			
2004	618			
2005	644			
2006	531			
2007	452			
2008	402			
2009	387			
2005-2009 Baseline	480		100	
2010	333	415	69	86
2011	349	395	73	82
Apr 2011-Mar 2012	391	391	81	81
Jul 2011-Jun 2012	385	386	80	80
Oct 2011-Sep 2012	393	381	82	79
2012		377		78
2013		359		75
2014		342		71
2015		326		68
2016		311		65
2017		296		62
2018		283		59
2019		269		56
2020		264		55

Notes: ** - KSI rates per 1,000,000 population

Index is based on 2005-2009 average



VISION 2020 FACTSHEET



HIGHWAYS FORECASTING AND ANALYTICAL SERVICES

OLDHAM KSI CASUALTY STATISTICS

Latest 12 Months Data October 2011 to September 2012

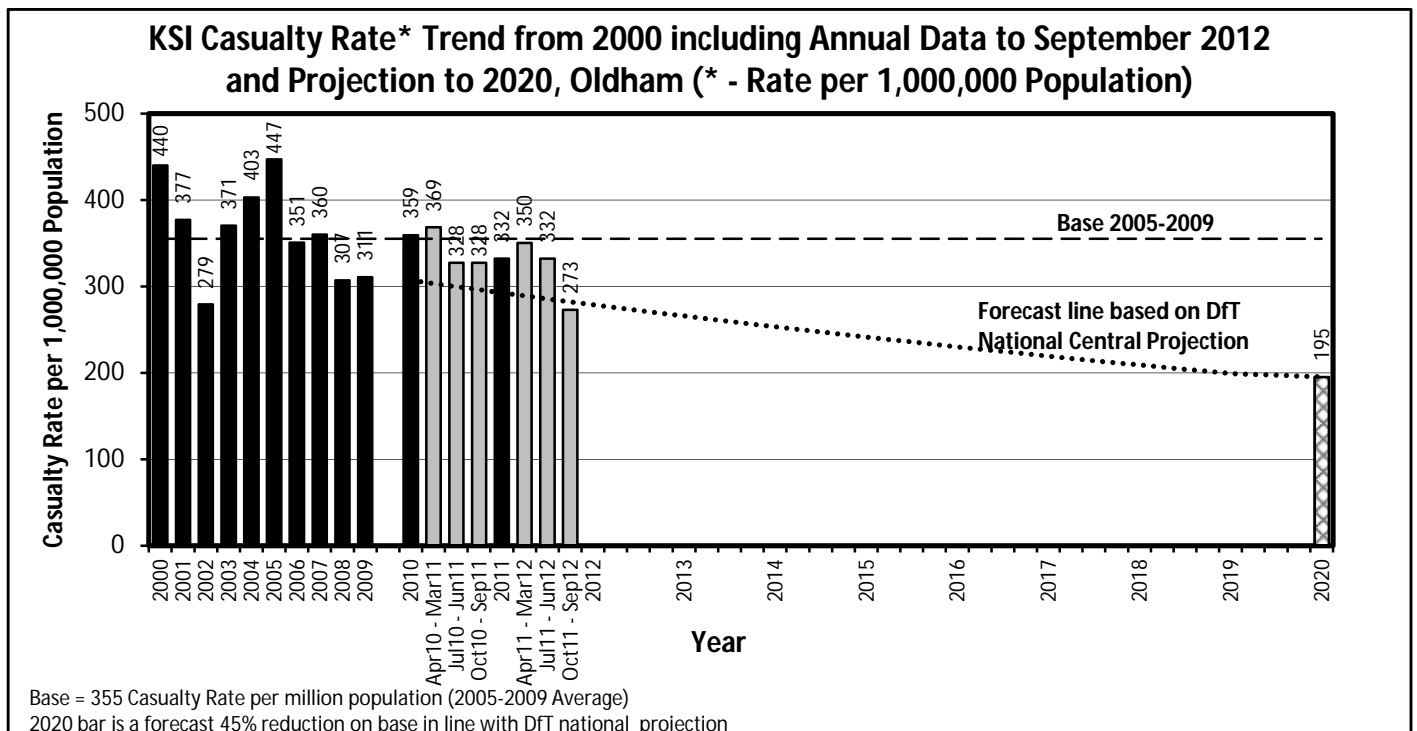
KSI Casualty Rates: Casualty Rate Trend 2000 - September 2012 and Projection to 2020

The table shows Oldham KSI casualty rates* from 2000 - September 2012 and forecast casualty reductions based on the DfT National Central Projection as outlined in the Strategic Framework for Road Safety. (*based on ONS population projections).

KSI Casualty Rate Trend 2000 - September 2012 and Projection to 2020				
Year	KSI Casualty Totals**		Index	
	Actual	Projection	Actual	Projection
2000	440			
2001	377			
2002	279			
2003	371			
2004	403			
2005	447			
2006	351			
2007	360			
2008	307			
2009	311			
2005-2009 Baseline	355		100	
2010	359	307	101	86
2011	332	292	94	82
<i>Apr 2011-Mar 2012</i>	350	289	99	81
<i>Jul 2011-Jun 2012</i>	332	286	94	80
<i>Oct 2011-Sep 2012</i>	273	282	77	79
2012		279		78
2013		266		75
2014		253		71
2015		241		68
2016		230		65
2017		219		62
2018		209		59
2019		199		56
2020		195		55

Notes: ** - KSI rates per 1,000,000 population

Index is based on 2005-2009 average



VISION 2020 FACTSHEET



**HIGHWAYS FORECASTING AND
ANALYTICAL SERVICES**

ROCHDALE KSI CASUALTY STATISTICS

Latest 12 Months Data October 2011 to September 2012

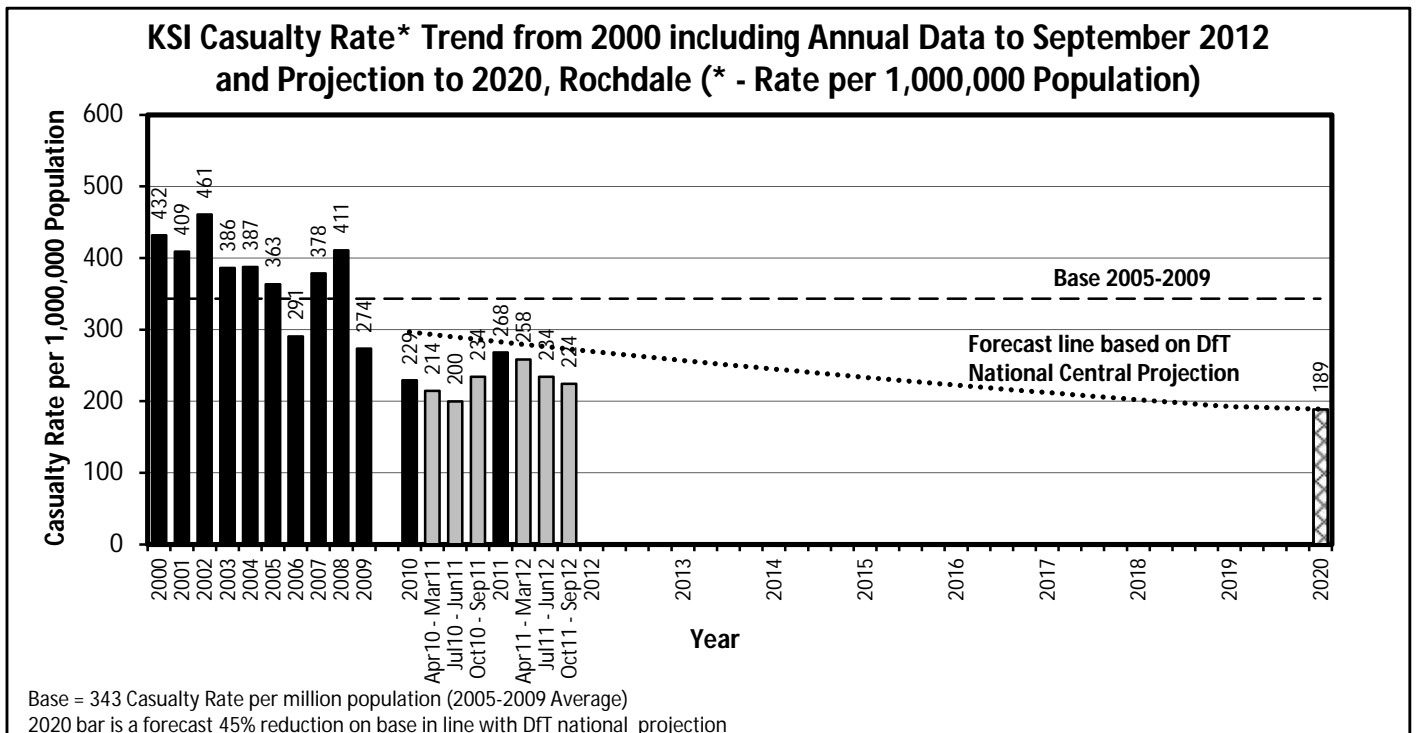
KSI Casualty Rates: Casualty Rate Trend 2000 - September 2012 and Projection to 2020

The table shows Rochdale KSI casualty rates* from 2000 - September 2012 and forecast casualty reductions based on the DfT National Central Projection as outlined in the Strategic Framework for Road Safety. (*based on ONS population projections).

KSI Casualty Rate Trend 2000 - September 2012 and Projection to 2020				
Year	KSI Casualty Totals**		Index	
	Actual	Projection	Actual	Projection
2000	432			
2001	409			
2002	461			
2003	386			
2004	387			
2005	363			
2006	291			
2007	378			
2008	411			
2009	274			
2005-2009 Baseline	343		100	
2010	229	297	67	86
2011	268	283	78	82
<i>Apr 2011-Mar 2012</i>	258	279	75	81
<i>Jul 2011-Jun 2012</i>	234	276	68	80
<i>Oct 2011-Sep 2012</i>	224	273	65	79
2012		270		78
2013		257		75
2014		245		71
2015		233		68
2016		222		65
2017		212		62
2018		202		59
2019		193		56
2020		189		55

Notes: ** - KSI rates per 1,000,000 population

Index is based on 2005-2009 average



VISION 2020 FACTSHEET



HIGHWAYS FORECASTING AND ANALYTICAL SERVICES

SALFORD KSI CASUALTY STATISTICS

Latest 12 Months Data October 2011 to September 2012

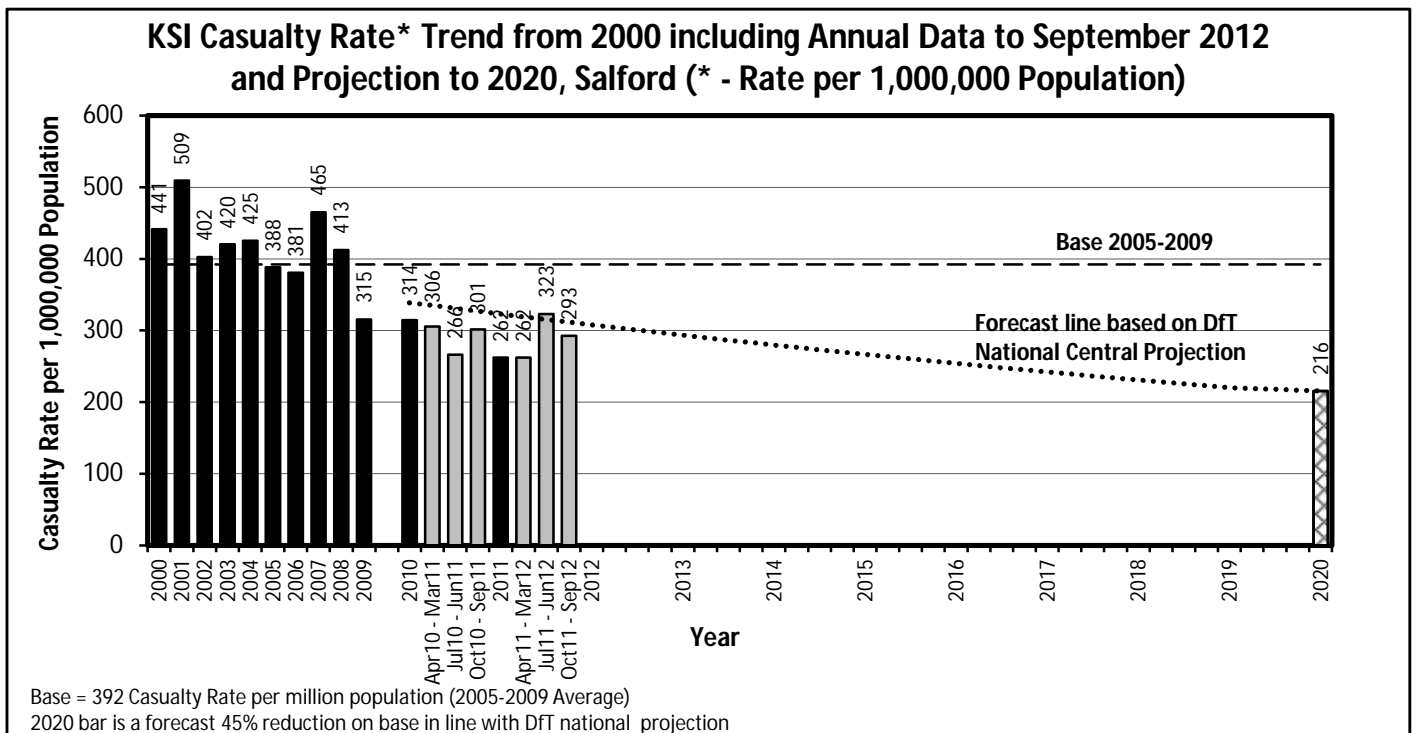
KSI Casualty Rates: Casualty Rate Trend 2000 - September 2012 and Projection to 2020

The table shows Salford KSI casualty rates* from 2000 - September 2012 and forecast casualty reductions based on the DfT National Central Projection as outlined in the Strategic Framework for Road Safety. (*based on ONS population projections).

KSI Casualty Rate Trend 2000 - September 2012 and Projection to 2020				
Year	KSI Casualty Totals**		Index	
	Actual	Projection	Actual	Projection
2000	441			
2001	509			
2002	402			
2003	420			
2004	425			
2005	388			
2006	381			
2007	465			
2008	413			
2009	315			
2005-2009 Baseline	392		100	
2010	314	339	80	86
2011	262	323	67	82
Apr 2011-Mar 2012	262	319	67	81
Jul 2011-Jun 2012	323	315	82	80
Oct 2011-Sep 2012	293	312	75	79
2012		308		78
2013		293		75
2014		280		71
2015		267		68
2016		254		65
2017		242		62
2018		231		59
2019		220		56
2020		216		55

Notes: ** - KSI rates per 1,000,000 population

Index is based on 2005-2009 average



VISION 2020 FACTSHEET



**HIGHWAYS FORECASTING AND
ANALYTICAL SERVICES**

STOCKPORT KSI CASUALTY STATISTICS

Latest 12 Months Data October 2011 to September 2012

KSI Casualty Rates: Casualty Rate Trend 2000 - September 2012 and Projection to 2020

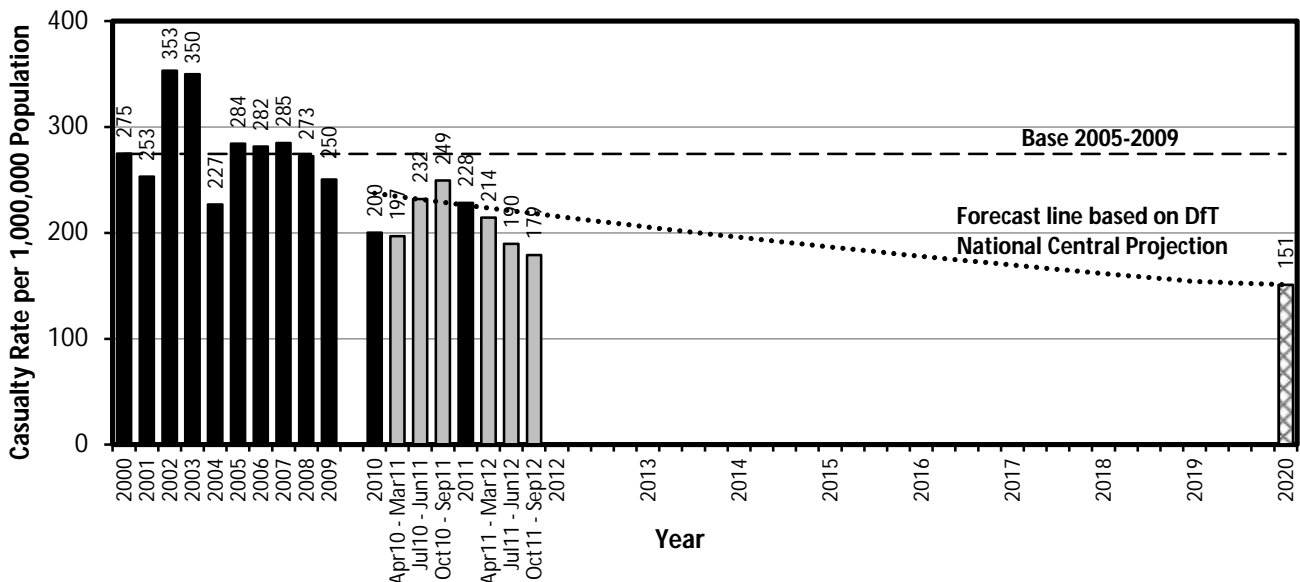
The table shows Stockport KSI casualty rates* from 2000 - September 2012 and forecast casualty reductions based on the DfT National Central Projection as outlined in the Strategic Framework for Road Safety. (*based on ONS population projections).

KSI Casualty Rate Trend 2000 - September 2012 and Projection to 2020				
Year	KSI Casualty Totals**		Index	
	Actual	Projection	Actual	Projection
2000	275			
2001	253			
2002	353			
2003	350			
2004	227			
2005	284			
2006	282			
2007	285			
2008	273			
2009	250			
2005-2009 Baseline	275		100	
2010	200	237	73	86
2011	228	226	83	82
Apr 2011-Mar 2012	214	224	78	81
Jul 2011-Jun 2012	190	221	69	80
Oct 2011-Sep 2012	179	218	65	79
2012		216		78
2013		205		75
2014		196		71
2015		187		68
2016		178		65
2017		170		62
2018		162		59
2019		154		56
2020		151		55

Notes: ** - KSI rates per 1,000,000 population

Index is based on 2005-2009 average

KSI Casualty Rate* Trend from 2000 including Annual Data to September 2012 and Projection to 2020, Stockport (* - Rate per 1,000,000 Population)



Base = 275 Casualty Rate per million population (2005-2009 Average)

2020 bar is a forecast 45% reduction on base in line with DfT national projection

VISION 2020 FACTSHEET



**HIGHWAYS FORECASTING AND
ANALYTICAL SERVICES**

TAMESIDE KSI CASUALTY STATISTICS

Latest 12 Months Data October 2011 to September 2012

KSI Casualty Rates: Casualty Rate Trend 2000 - September 2012 and Projection to 2020

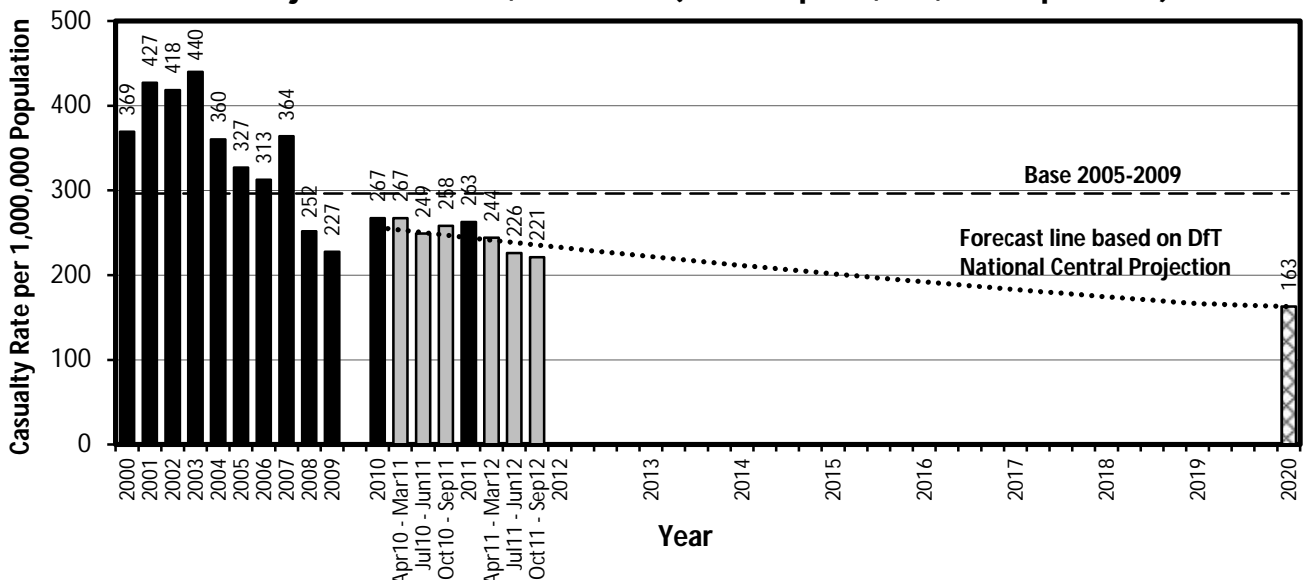
The table shows Tameside KSI casualty rates* from 2000 - September 2012 and forecast casualty reductions based on the DfT National Central Projection as outlined in the Strategic Framework for Road Safety. (*based on ONS population projections).

KSI Casualty Rate Trend 2000 - September 2012 and Projection to 2020				
Year	KSI Casualty Totals**		Index	
	Actual	Projection	Actual	Projection
2000	369			
2001	427			
2002	418			
2003	440			
2004	360			
2005	327			
2006	313			
2007	364			
2008	252			
2009	227			
2005-2009 Baseline	296		100	
2010	267	256	90	86
2011	263	244	89	82
Apr 2011-Mar 2012	244	241	82	81
Jul 2011-Jun 2012	226	238	76	80
Oct 2011-Sep 2012	221	236	75	79
2012		233		78
2013		222		75
2014		211		71
2015		201		68
2016		192		65
2017		183		62
2018		174		59
2019		166		56
2020		163		55

Notes: ** - KSI rates per 1,000,000 population

Index is based on 2005-2009 average

KSI Casualty Rate* Trend from 2000 including Annual Data to September 2012 and Projection to 2020, Tameside (* - Rate per 1,000,000 Population)



Base = 296 Casualty Rate per million population (2005-2009 Average)

2020 bar is a forecast 45% reduction on base in line with DfT national projection

VISION 2020 FACTSHEET



**HIGHWAYS FORECASTING AND
ANALYTICAL SERVICES**

TRAFFORD KSI CASUALTY STATISTICS

Latest 12 Months Data October 2011 to September 2012

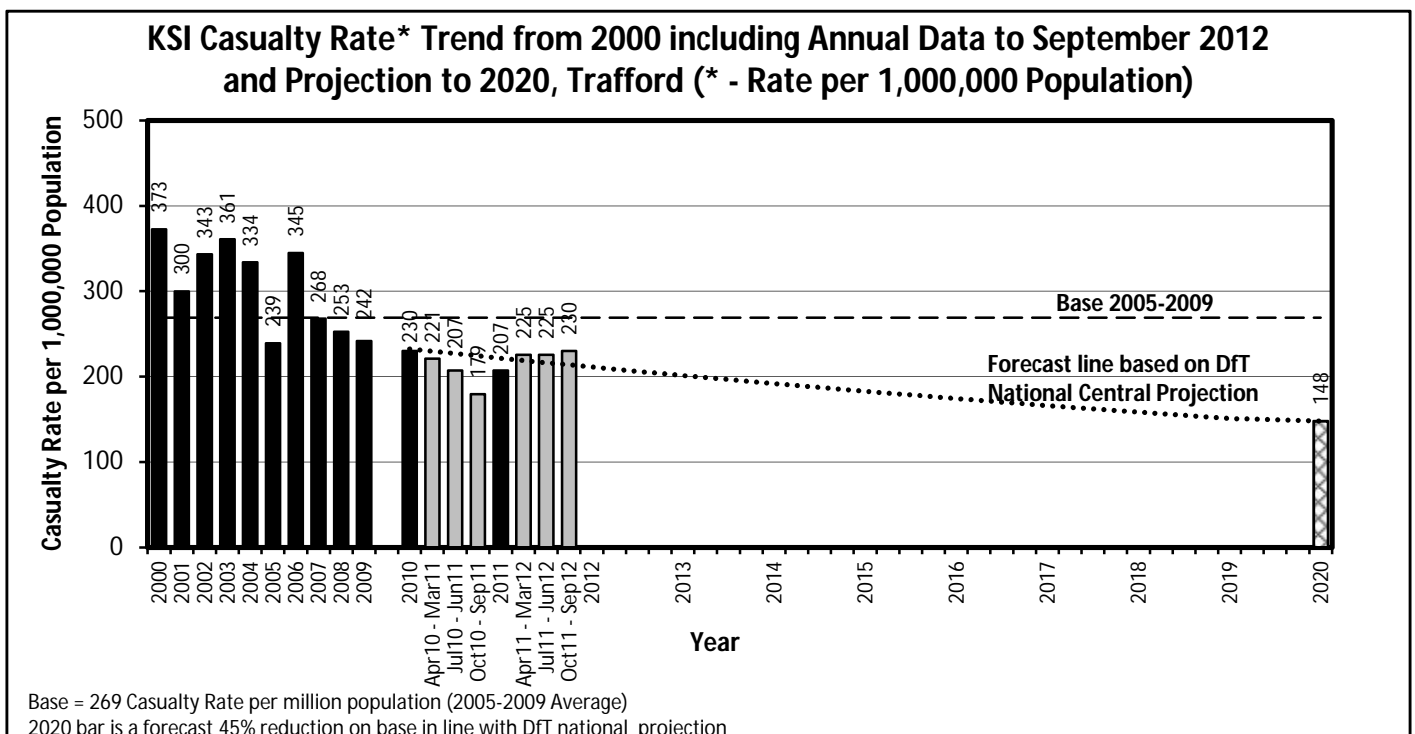
KSI Casualty Rates: Casualty Rate Trend 2000 - September 2012 and Projection to 2020

The table shows Trafford KSI casualty rates* from 2000 - September 2012 and forecast casualty reductions based on the DfT National Central Projection as outlined in the Strategic Framework for Road Safety. (*based on ONS population projections).

KSI Casualty Rate Trend 2000 - September 2012 and Projection to 2020				
Year	KSI Casualty Totals**		Index	
	Actual	Projection	Actual	Projection
2000	373			
2001	300			
2002	343			
2003	361			
2004	334			
2005	239			
2006	345			
2007	268			
2008	253			
2009	242			
2005-2009 Baseline	269		100	
2010	230	232	86	86
2011	207	222	77	82
Apr 2011-Mar 2012	225	219	84	81
Jul 2011-Jun 2012	225	216	84	80
Oct 2011-Sep 2012	230	214	86	79
2012		211		78
2013		201		75
2014		192		71
2015		183		68
2016		174		65
2017		166		62
2018		158		59
2019		151		56
2020		148		55

Notes: ** - KSI rates per 1,000,000 population

Index is based on 2005-2009 average



VISION 2020 FACTSHEET



**HIGHWAYS FORECASTING AND
ANALYTICAL SERVICES**

WIGAN KSI CASUALTY STATISTICS

Latest 12 Months Data October 2011 to September 2012

KSI Casualty Rates: Casualty Rate Trend 2000 - September 2012 and Projection to 2020

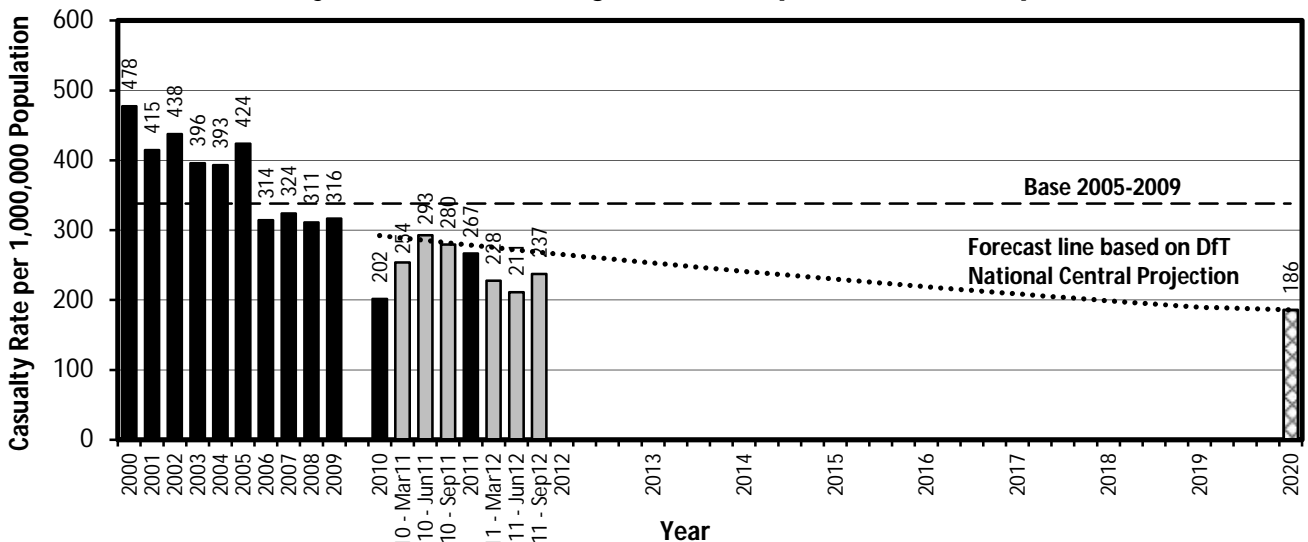
The table shows Wigan KSI casualty rates* from 2000 - September 2012 and forecast casualty reductions based on the DfT National Central Projection as outlined in the Strategic Framework for Road Safety. (*based on ONS population projections).

KSI Casualty Rate Trend 2000 - September 2012 and Projection to 2020				
Year	KSI Casualty Totals**		Index	
	Actual	Projection	Actual	Projection
2000	478			
2001	415			
2002	438			
2003	396			
2004	393			
2005	424			
2006	314			
2007	324			
2008	311			
2009	316			
2005-2009 Baseline	338		100	
2010	202	292	60	86
2011	267	278	79	82
Apr 2011-Mar 2012	228	275	67	81
Jul 2011-Jun 2012	211	272	63	80
Oct 2011-Sep 2012	237	269	70	79
2012		265		78
2013		253		75
2014		241		71
2015		230		68
2016		219		65
2017		209		62
2018		199		59
2019		190		56
2020		186		55

Notes: ** - KSI rates per 1,000,000 population

Index is based on 2005-2009 average

KSI Casualty Rate* Trend from 2000 including Annual Data to September 2012 and Projection to 2020, Wigan (* - Rate per 1,000,000 Population)



Base = 338 Casualty Rate per million population (2005-2009 Average)

2020 bar is a forecast 45% reduction on base in line with DfT national projection