



LTP2 FACTSHEET

GREATER MANCHESTER TRANSPORTATION UNIT

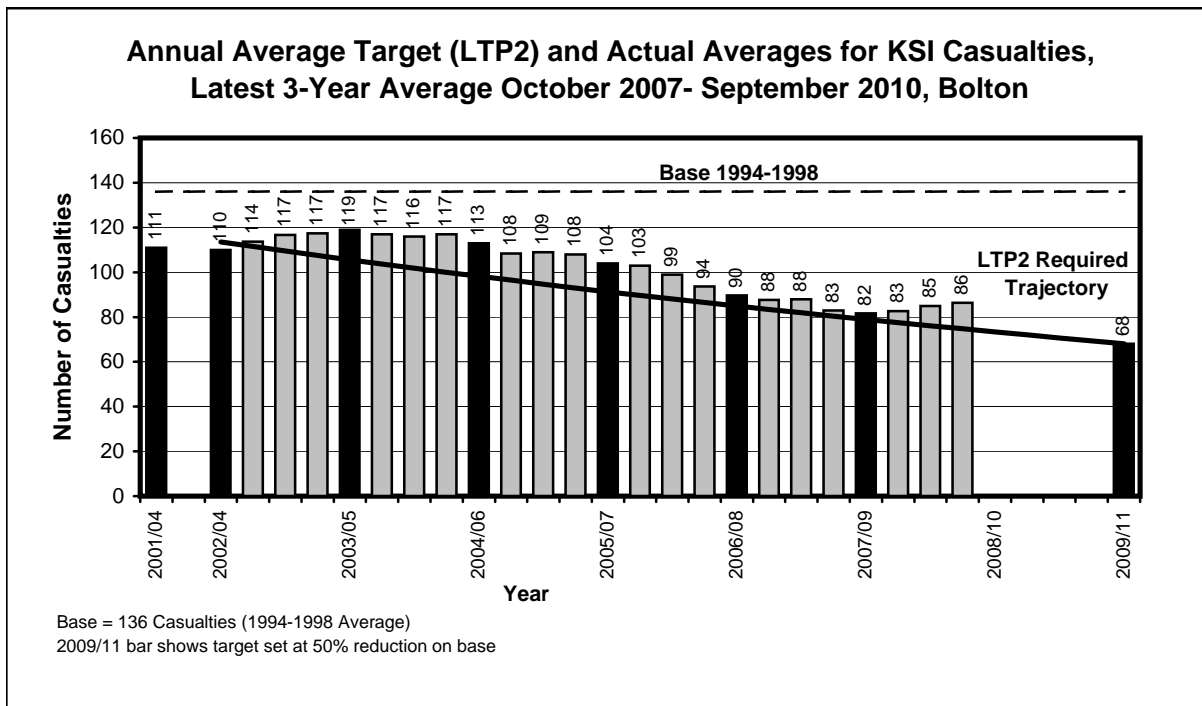
BOLTON KSI CASUALTY STATISTICS
October 2007 - September 2010

KSI Casualties: 50% casualty reduction on 1994-1998 baseline by 2010

Bolton KSI Casualties, Latest 3-Year Average, from October 07 to September 10

	Annual Average		Index	
	Trajectory	Actual	Trajectory	Actual
1994-1998 baseline		136		100
2001-2004: baseline		111		81
2003: average 2002/2003/2004	114	110	83	80
2004: average 2003/2004/2005	106	119	77	87
2005: average 2004/2005/2006	98	113	72	83
2006: average 2005/2006/2007	91	104	67	76
2007: average 2006/2007/2008	85	90	62	66
2008: average 2007/2008/2009	79	82	58	60
<i>Average Apr 07-Mar 10</i>	78	83	57	61
<i>Average Jul 07-Jun 10</i>	76	85	56	62
<i>Average Oct 07-Sep 10</i>	75	86	55	63
2009: average 2008/2009/2010	73		54	
Target 2010: average 2009/2010/2011	68		50	

Note: The casualties for the target year will not be known until February/March 2012 (when the full 2011 data is available)





LTP2 FACTSHEET

GREATER MANCHESTER TRANSPORTATION UNIT

BOLTON CHILD KSI CASUALTY STATISTICS

October 2007 - September 2010

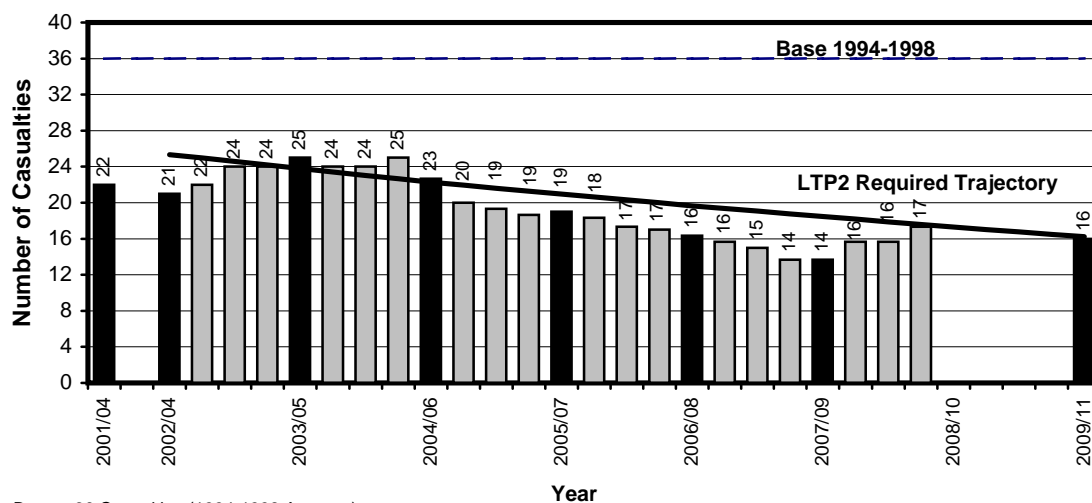
Child KSI Casualties: 55% casualty reduction on 1994-1998 baseline by 2010

Bolton Child KSI Casualties, Latest 3-Year Average, from October 07 to September 10

Year	Annual Average		Index	
	Trajectory	Actual	Trajectory	Actual
1994-1998 baseline		36		100
2001-2004: baseline		22		61
2003: average 2002/2003/2004	25	21	70	58
2004: average 2003/2004/2005	24	25	66	69
2005: average 2004/2005/2006	22	23	62	63
2006: average 2005/2006/2007	21	19	58	53
2007: average 2006/2007/2008	20	16	55	45
2008: average 2007/2008/2009	18	14	51	38
<i>Average Apr 07-Mar 10</i>	18	16	50	44
<i>Average Jul 07-Jun 10</i>	18	16	50	44
<i>Average Oct 07-Sep 10</i>	18	17	49	48
2009: average 2008/2009/2010	17		48	
Target 2010: average 2009/2010/2011	16		45	

Note: The casualties for the target year will not be known until February/March 2012 (when the full 2011 data is available)

Annual Average Target (LTP2) and Actual Averages for Child KSI Casualties, Latest 3-Year Average October 2007-September 2010, Bolton



Base = 36 Casualties (1994-1998 Average)
2009/11 bar shows target set at 55% reduction on base



LTP2 FACTSHEET

GREATER MANCHESTER TRANSPORTATION UNIT

BOLTON SLIGHTLY INJURED CASUALTY STATISTICS

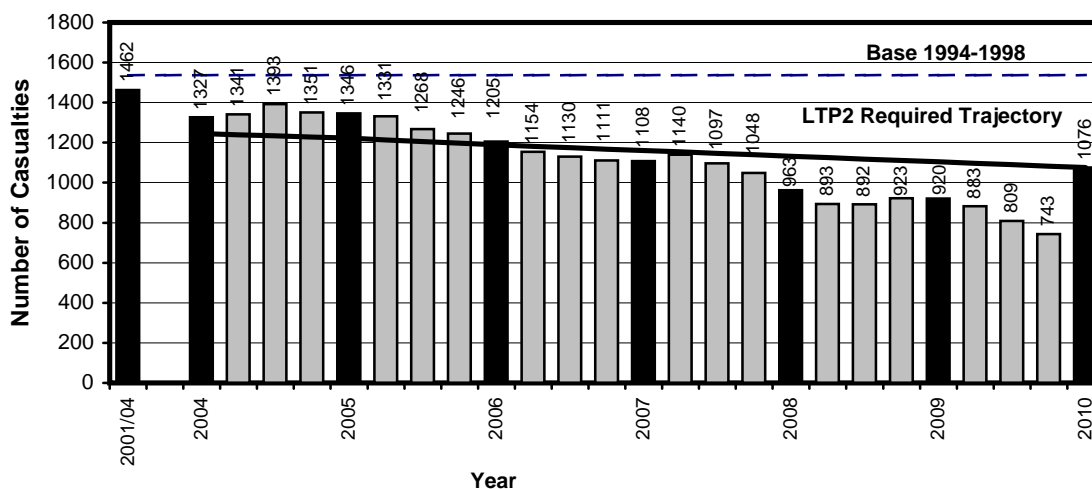
October 2009 - September 2010

Slight Casualties: 30% casualty reduction on 1994-1998 baseline by 2010

Bolton Slight Casualties, Latest 12 Months, from October 09 to September 10

Target (LTP2) and Actual Numbers for Slight Casualties				
Year	Number		Index	
	Trajectory	Actual	Trajectory	Actual
1994-1998 baseline		1537		100
2001-2004: baseline		1462		95
2004	1245	1327	81	86
2005	1222	1346	80	88
2006	1189	1205	77	78
2007	1161	1108	76	72
2008	1132	963	74	63
2009	1104	920	72	60
Apr 09-Mar 10	1097	883	71	57
Jul 09-Jun 10	1090	809	71	53
Oct 09-Sep 10	1083	743	70	48
Target 2010	1076		70	

Target (LTP2) and Actual Numbers for Slight Casualties, Latest 12 Months October 2009-September 2010, Bolton



Base = 1537 Casualties (1994-1998 Average)
2010 bar shows target set at 30% reduction on base

Greater Manchester Transportation Unit



PEDESTRIAN AND PEDAL CYCLE FACTSHEET

BOLTON PEDESTRIAN AND PEDAL CYCLE CASUALTY STATISTICS

October 08 - September 09, October 09 - September 10, Base

Bolton Pedestrian Casualties by Road Class

October 08 - September 09, October 09 - September 10, Base

Road Class	Base ⁽¹⁾ Ave 1994-98	Oct 08 - Sep 09	Oct 09 - Sep 10	% Change (09 - 10/ 08 - 09)	% Change (09 - 10 /Base)
Motorway	0	1	0	-(2)	-(2)
A Class Roads	137	66	61	-7.6	-55.5
B Class Roads	43	19	37	94.7	-14.0
Minor Roads	142	70	63	-10.0	-55.6
Non-Motorways	322	155	161	3.9	-50.0
Total	322	156	161	3.2	-50.0

Bolton Pedal Cycle Casualties by Road Class

October 08 - September 09, October 09 - September 10, Base

Road Class	Base ⁽¹⁾ Ave 1994-98	Oct 08 - Sep 09	Oct 09 - Sep 10	% Change (09 - 10/ 08 - 09)	% Change (09 - 10 /Base)
Motorway	0	0	0	-(2)	-(2)
A Class Roads	40	20	33	65.0	-17.5
B Class Roads	12	9	8	-11.1	-33.3
Minor Roads	54	26	19	-26.9	-64.8
Non-Motorways	107	55	60	9.1	-43.9
Total	107	55	60	9.1	-43.9

Notes :-

1. Base figures are rounded to the nearest whole number
2. Casualty numbers too small to make % changes meaningful



LTP2 FACTSHEET

GREATER MANCHESTER TRANSPORTATION UNIT

BURY KSI CASUALTY STATISTICS

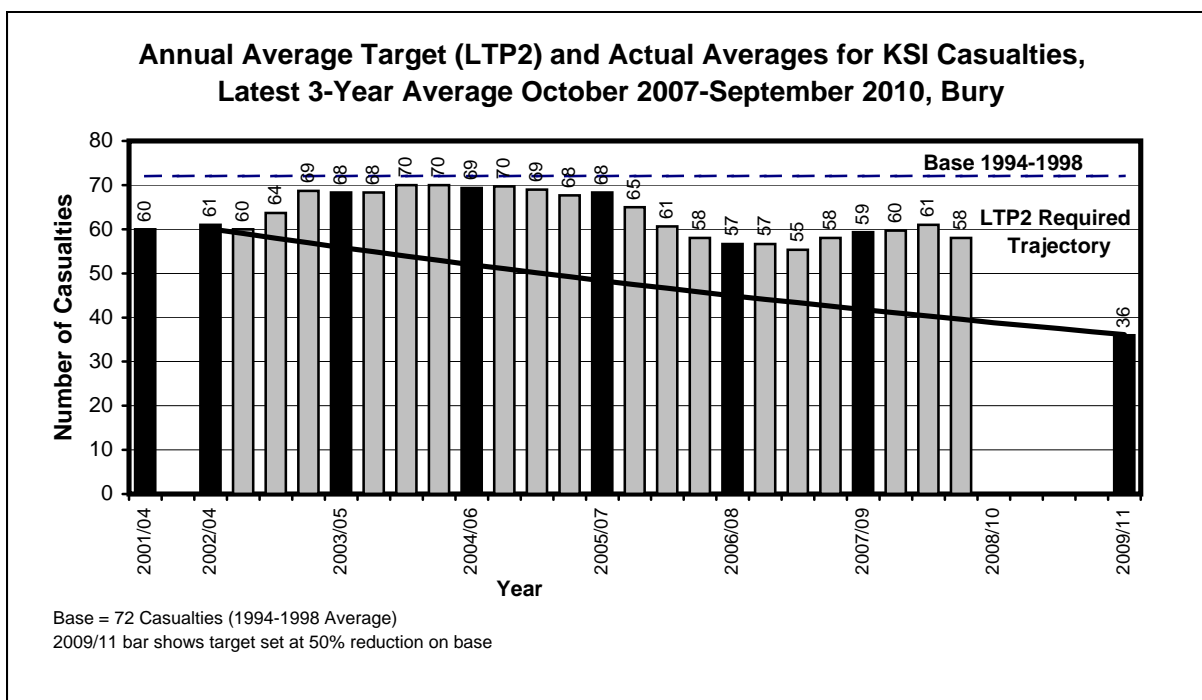
October 2007 - September 2010

KSI Casualties: 50% casualty reduction on 1994-1998 baseline by 2010

Bury KSI Casualties, Latest 3-Year Average, from October 07 to September 10

Year	Annual Average		Index	
	Trajectory	Actual	Trajectory	Actual
1994-1998 baseline		72		100
2001-2004: baseline		60		82
2003: average 2002/2003/2004	60	61	83	84
2004: average 2003/2004/2005	56	68	77	95
2005: average 2004/2005/2006	52	69	72	96
2006: average 2005/2006/2007	48	68	67	95
2007: average 2006/2007/2008	45	57	62	78
2008: average 2007/2008/2009	42	59	58	82
<i>Average Apr 07-Mar 10</i>	41	60	57	83
<i>Average Jul 07-Jun 10</i>	40	61	56	84
<i>Average Oct 07-Sep 10</i>	40	58	55	80
2009: average 2008/2009/2010	39		54	
Target 2010: average 2009/2010/2011	36		50	

Note: The casualties for the target year will not be known until February/March 2012 (when the full 2011 data is available)





LTP2 FACTSHEET

GREATER MANCHESTER TRANSPORTATION UNIT

BURY CHILD KSI CASUALTY STATISTICS
October 2007 - September 2010

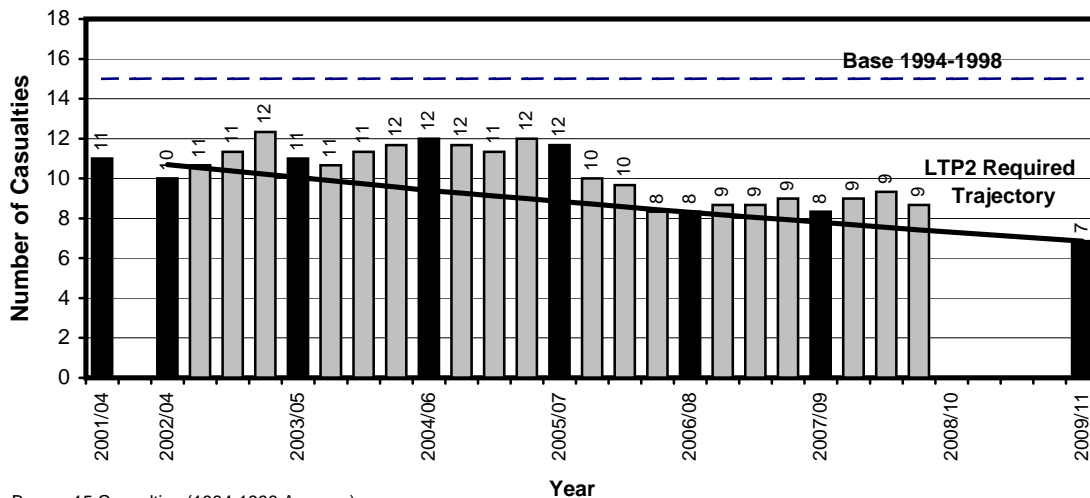
Child KSI Casualties: 55% casualty reduction on 1994-1998 baseline by 2010

Bury Child KSI Casualties, Latest 3-Year Average, from October 07 to September 10

Annual Average Target (LTP2) and Actual Averages for Child KSI Casualties				
Year	Annual Average		Index	
	Trajectory	Actual	Trajectory	Actual
1994-1998 baseline		15		100
2001-2004: baseline		11		74
2003: average 2002/2003/2004	11	10	70	66
2004: average 2003/2004/2005	10	11	66	70
2005: average 2004/2005/2006	9	12	62	79
2006: average 2005/2006/2007	9	12	58	77
2007: average 2006/2007/2008	8	8	55	55
2008: average 2007/2008/2009	8	8	51	55
<i>Average Apr 07-Mar 10</i>	8	9	50	59
<i>Average Jul 07-Jun 10</i>	8	9	50	61
<i>Average Oct 07-Sep 10</i>	7	9	49	57
2009: average 2008/2009/2010	7		48	
Target 2010: average 2009/2010/2011	7		45	

Note: The casualties for the target year will not be known until February/March 2012 (when the full 2011 data is available)

**Annual Average Target (LTP2) and Actual Averages for Child KSI Casualties,
Latest 3-Year Average October 2007-September 2010, Bury**



Base = 15 Casualties (1994-1998 Average)
2009/11 bar shows target set at 55% reduction on base



LTP2 FACTSHEET

GREATER MANCHESTER TRANSPORTATION UNIT

BURY SLIGHTLY INJURED CASUALTY STATISTICS

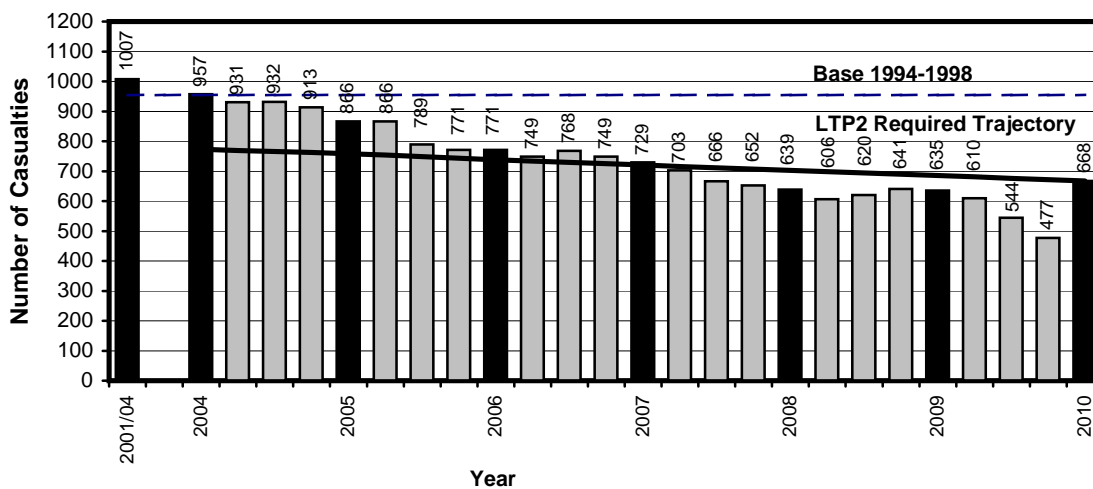
October 2009 - September 2010

Slight Casualties: 30% casualty reduction on 1994-1998 baseline by 2010

Bury Slight Casualties, Latest 12 Months, from October 09 to September 10

Target (LTP2) and Actual Numbers for Slight Casualties				
Year	Number		Index	
	Trajectory	Actual	Trajectory	Actual
1994-1998 baseline		954		100
2001-2004: baseline		1007		106
2004	773	957	81	100
2005	759	866	80	91
2006	738	771	77	81
2007	720	729	76	76
2008	703	639	74	67
2009	685	635	72	67
<i>Apr 09-Mar 10</i>	681	610	71	64
<i>Jul 09-Jun 10</i>	676	544	71	57
<i>Oct 09-Sep 10</i>	672	477	70	50
Target 2010	668		70	

Target (LTP2) and Actual Numbers for Slight Casualties,
Latest 12 Months October 2009-September 2010, Bury



Base = 954 Casualties (1994-1998 Average)
2010 bar shows target set at 30% reduction on base

Greater Manchester Transportation Unit



PEDESTRIAN AND PEDAL CYCLE FACTSHEET

BURY PEDESTRIAN AND PEDAL CYCLE CASUALTY STATISTICS

October 08 - September 09, October 09 - September 10, Base

Bury Pedestrian Casualties by Road Class

October 08 - September 09, October 09 - September 10, Base

Road Class	Base ⁽¹⁾ Ave 1994-98	Oct 08 - Sep 09	Oct 09 - Sep 10	% Change (09 - 10/ 08 - 09)	% Change (09 - 10 /Base)
Motorway	1	0	1	-(2)	-(2)
A Class Roads	64	31	33	6.5	-48.4
B Class Roads	25	13	16	23.1	-36.0
Minor Roads	78	42	40	-4.8	-48.7
Non-Motorways	168	86	89	3.5	-47.0
Total	169	86	90	4.7	-46.7

Bury Pedal Cycle Casualties by Road Class

October 08 - September 09, October 09 - September 10, Base

Road Class	Base ⁽¹⁾ Ave 1994-98	Oct 08 - Sep 09	Oct 09 - Sep 10	% Change (09 - 10/ 08 - 09)	% Change (09 - 10 /Base)
Motorway	0	0	0	-(2)	-(2)
A Class Roads	24	23	15	-34.8	-37.5
B Class Roads	12	4	2	-50.0	-83.3
Minor Roads	31	18	22	22.2	-29.0
Non-Motorways	67	45	39	-13.3	-41.8
Total	67	45	39	-13.3	-41.8

Notes :-

1. Base figures are rounded to the nearest whole number
2. Casualty numbers too small to make % changes meaningful



LTP2 FACTSHEET

GREATER MANCHESTER TRANSPORTATION UNIT

MANCHESTER KSI CASUALTY STATISTICS

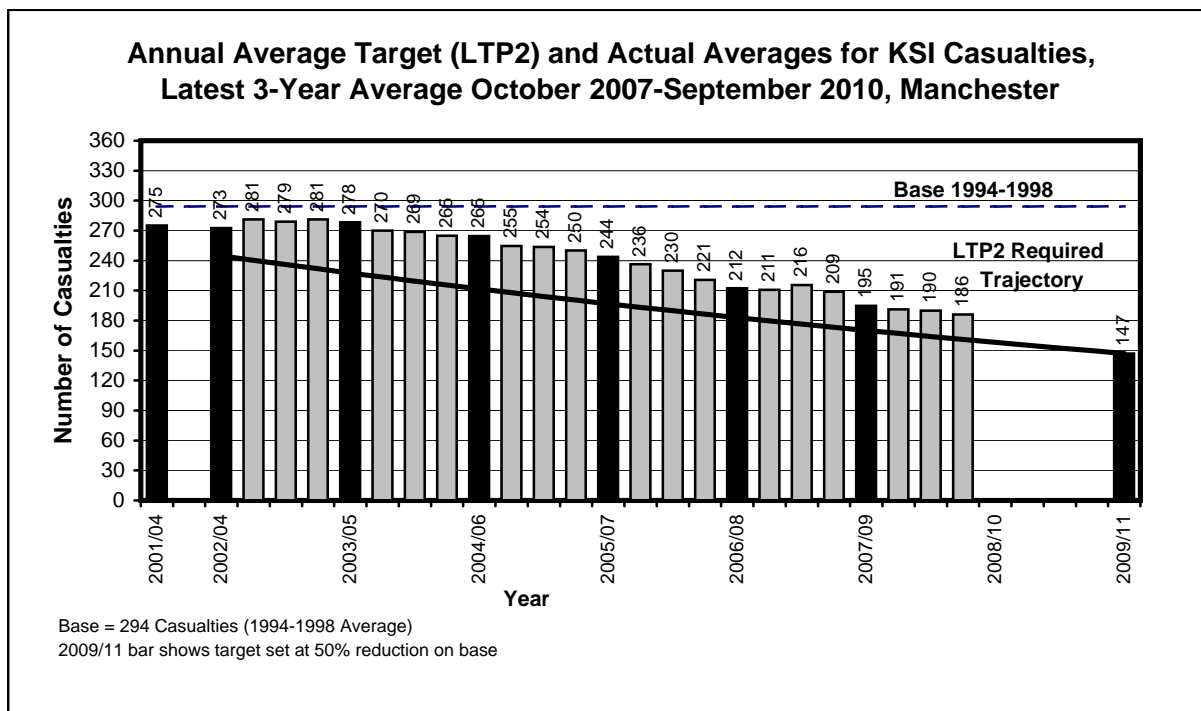
October 2007 - September 2010

KSI Casualties: 50% casualty reduction on 1994-1998 baseline by 2010

Manchester KSI Casualties, Latest 3-Year Average, from October 07 to September 10

Annual Average Target (LTP2) and Actual Averages for KSI Casualties				
Year	Annual Average		Index	
	Trajectory	Actual	Trajectory	Actual
1994-1998 baseline		294		100
2001-2004: baseline		275		94
2003: average 2002/2003/2004	245	273	83	93
2004: average 2003/2004/2005	227	278	77	95
2005: average 2004/2005/2006	212	265	72	90
2006: average 2005/2006/2007	197	244	67	83
2007: average 2006/2007/2008	183	212	62	72
2008: average 2007/2008/2009	170	195	58	66
<i>Average Apr 07-Mar 10</i>	167	191	57	65
<i>Average Jul 07-Jun 10</i>	164	190	56	65
<i>Average Oct 07-Sep 10</i>	161	186	55	63
2009: average 2008/2009/2010	158		54	
Target 2010: average 2009/2010/2011	147		50	

Note: The casualties for the target year will not be known until February/March 2012 (when the full 2011 data is available)





LTP2 FACTSHEET

GREATER MANCHESTER TRANSPORTATION UNIT

MANCHESTER CHILD KSI CASUALTY STATISTICS

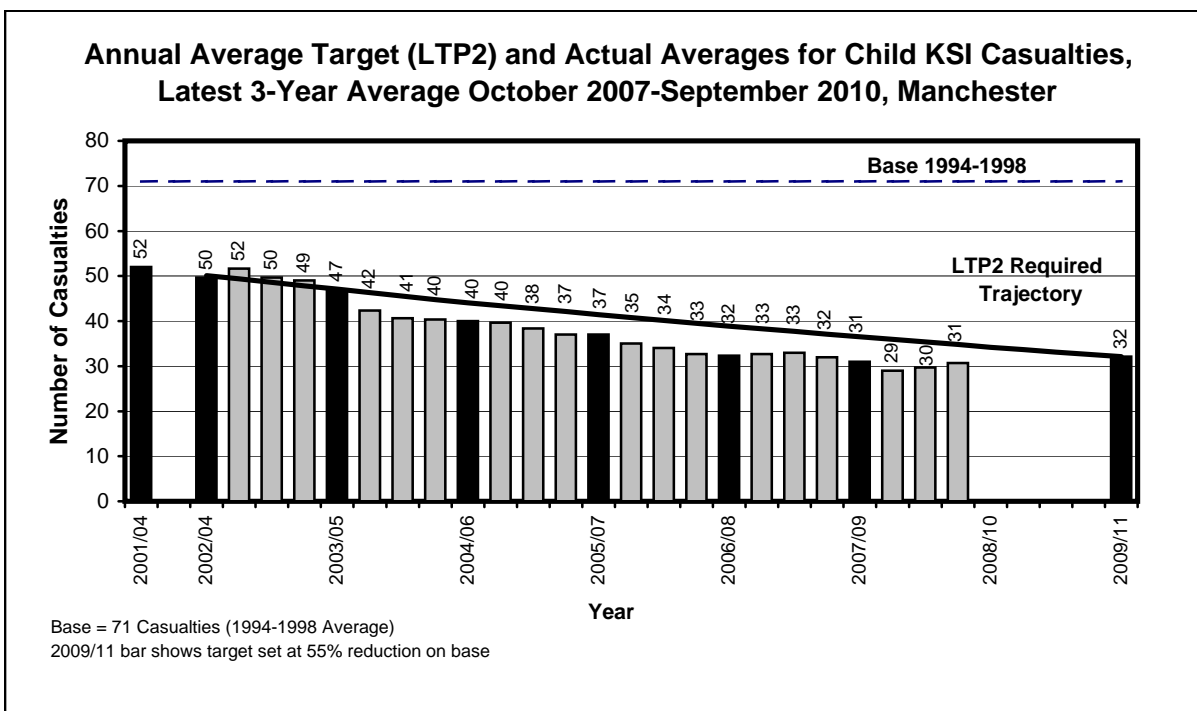
October 2007 - September 2010

Child KSI Casualties: 55% casualty reduction on 1994-1998 baseline by 2010

Manchester Child KSI Casualties, Latest 3-Year Average, from October 07 to September 10

Annual Average Target (LTP2) and Actual Averages for Child KSI Casualties				
Year	Annual Average		Index	
	Trajectory	Actual	Trajectory	Actual
1994-1998 baseline		71		100
2001-2004: baseline		52		73
2003: average 2002/2003/2004	50	50	70	70
2004: average 2003/2004/2005	47	47	66	66
2005: average 2004/2005/2006	44	40	62	56
2006: average 2005/2006/2007	41	37	58	52
2007: average 2006/2007/2008	39	32	55	45
2008: average 2007/2008/2009	37	31	51	44
<i>Average Apr 07-Mar 10</i>	36	29	50	41
<i>Average Jul 07-Jun 10</i>	35	30	50	42
<i>Average Oct 07-Sep 10</i>	35	31	49	43
2009: average 2008/2009/2010	34		48	
Target 2010: average 2009/2010/2011	32		45	

Note: The casualties for the target year will not be known until February/March 2012 (when the full 2011 data is available)





LTP2 FACTSHEET

GREATER MANCHESTER TRANSPORTATION UNIT

MANCHESTER SLIGHTLY INJURED CASUALTY STATISTICS

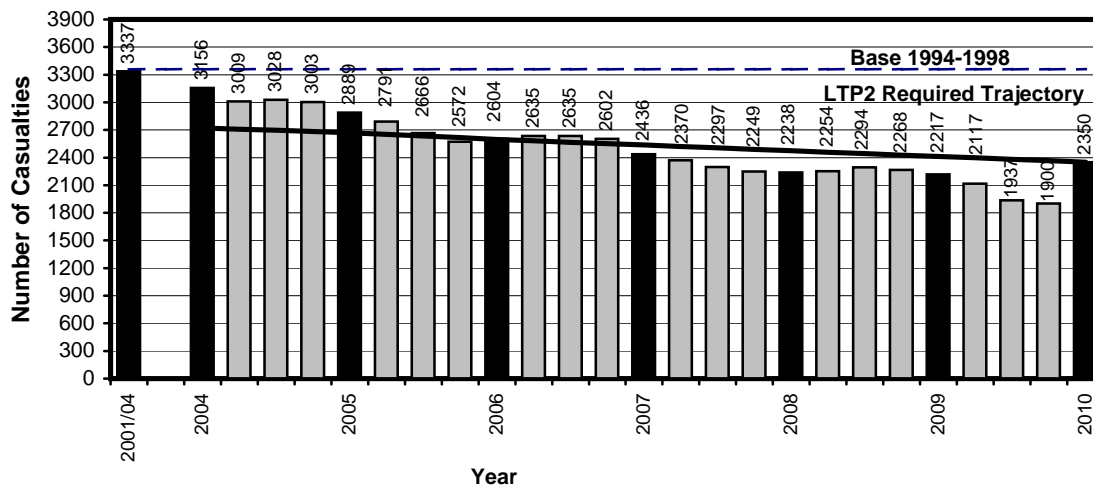
October 2009 - September 2010

Slight Casualties: 30% casualty reduction on 1994-1998 baseline by 2010

Manchester Slight Casualties, Latest 12 Months, from October 09 to September 10

Target (LTP2) and Actual Numbers for Slight Casualties				
Year	Number		Index	
	Trajectory	Actual	Trajectory	Actual
1994-1998 baseline		3358		100
2001-2004: baseline		3337		99
2004	2721	3156	81	94
2005	2671	2889	80	86
2006	2597	2604	77	78
2007	2536	2436	76	73
2008	2474	2238	74	67
2009	2412	2217	72	66
<i>Apr 09-Mar 10</i>	2397	2117	71	63
<i>Jul 09-Jun 10</i>	2381	1937	71	58
<i>Oct 09-Sep 10</i>	2366	1900	70	57
Target 2010	2350		70	

Target (LTP2) and Actual Numbers for Slight Casualties,
Latest 12 Months October 2009-September 2010, Manchester



Base = 3358 Casualties (1994-1998 Average)

2010 bar shows target set at 30% reduction on base

Greater Manchester Transportation Unit



PEDESTRIAN AND PEDAL CYCLE FACTSHEET

MANCHESTER PEDESTRIAN AND PEDAL CYCLE CASUALTY STATISTICS

October 08 - September 09, October 09 - September 10, Base

Manchester Pedestrian Casualties by Road Class

October 08 - September 09, October 09 - September 10, Base

Road Class	Base ⁽¹⁾ Ave 1994-98	Oct 08 - Sep 09	Oct 09 - Sep 10	% Change (09 - 10/ 08 - 09)	% Change (09 - 10 /Base)
Motorway	1	1	0	-(3)	-(3)
A Class Roads ⁽²⁾	311	179	127	-29.1	-59.2
B Class Roads	86	41	48	17.1	-44.2
Minor Roads	351	198	165	-16.7	-53.0
Non-Motorways	748	418	340	-18.7	-54.5
Total	749	419	340	-18.9	-54.6

Manchester Pedal Cycle Casualties by Road Class

October 08 - September 09, October 09 - September 10, Base

Road Class	Base ⁽¹⁾ Ave 1994-98	Oct 08 - Sep 09	Oct 09 - Sep 10	% Change (09 - 10/ 08 - 09)	% Change (09 - 10 /Base)
Motorway	0	0	0	-(3)	-(3)
A Class Roads ⁽²⁾	105	107	126	17.8	20.0
B Class Roads	44	47	37	-21.3	-15.9
Minor Roads	138	88	102	15.9	-26.1
Non-Motorways	288	242	265	9.5	-8.0
Total	288	242	265	9.5	-8.0

Notes :-

1. Base figures are rounded to the nearest whole number
2. A Roads include A(M) and A(T) roads
3. Casualty numbers too small to make % changes meaningful



LTP2 FACTSHEET

GREATER MANCHESTER TRANSPORTATION UNIT

OLDHAM KSI CASUALTY STATISTICS

October 2007 - September 2010

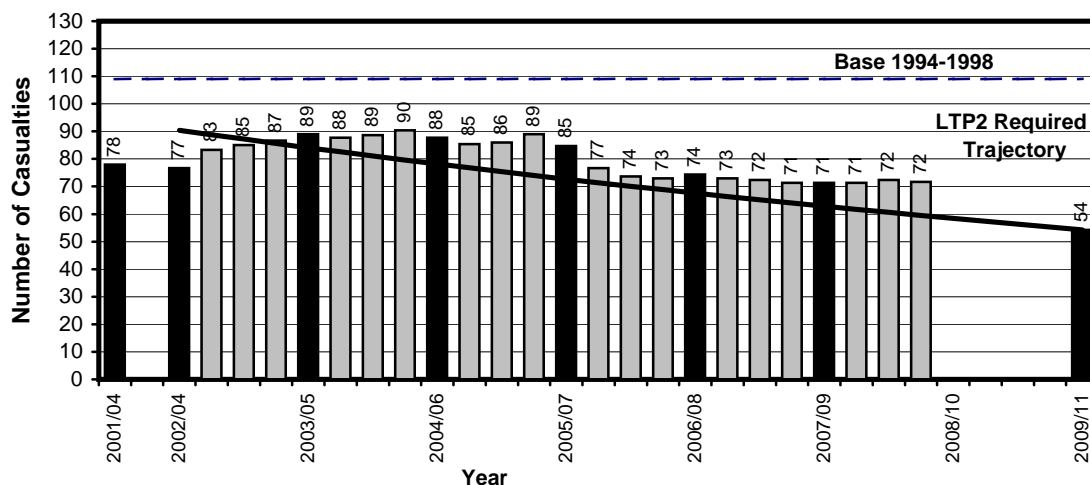
KSI Casualties: 50% casualty reduction on 1994-1998 baseline by 2010

Oldham KSI Casualties, Latest 3-Year Average, from October 07 to September 10

Annual Average Target (LTP2) and Actual Averages for KSI Casualties				
Year	Annual Average		Index	
	Trajectory	Actual	Trajectory	Actual
1994-1998 baseline		109		100
2001-2004: baseline		78		72
2003: average 2002/2003/2004	90	77	83	71
2004: average 2003/2004/2005	84	89	77	82
2005: average 2004/2005/2006	78	88	72	81
2006: average 2005/2006/2007	73	85	67	78
2007: average 2006/2007/2008	68	74	62	68
2008: average 2007/2008/2009	63	71	58	66
Average Apr 07-Mar 10	62	71	57	66
Average Jul 07-Jun 10	61	72	56	67
Average Oct 07-Sep 10	60	72	55	66
2009: average 2008/2009/2010	61		54	
Target 2010: average 2009/2010/2011	54		50	

Note: The casualties for the target year will not be known until February/March 2012 (when the full 2011 data is available)

**Annual Average Target (LTP2) and Actual Averages for KSI Casualties,
Latest 3-Year Average October 2007-September 2010, Oldham**



Base = 109 Casualties (1994-1998 Average)
2009/11 bar shows target set at 50% reduction on base



LTP2 FACTSHEET

GREATER MANCHESTER TRANSPORTATION UNIT

OLDHAM CHILD KSI CASUALTY STATISTICS

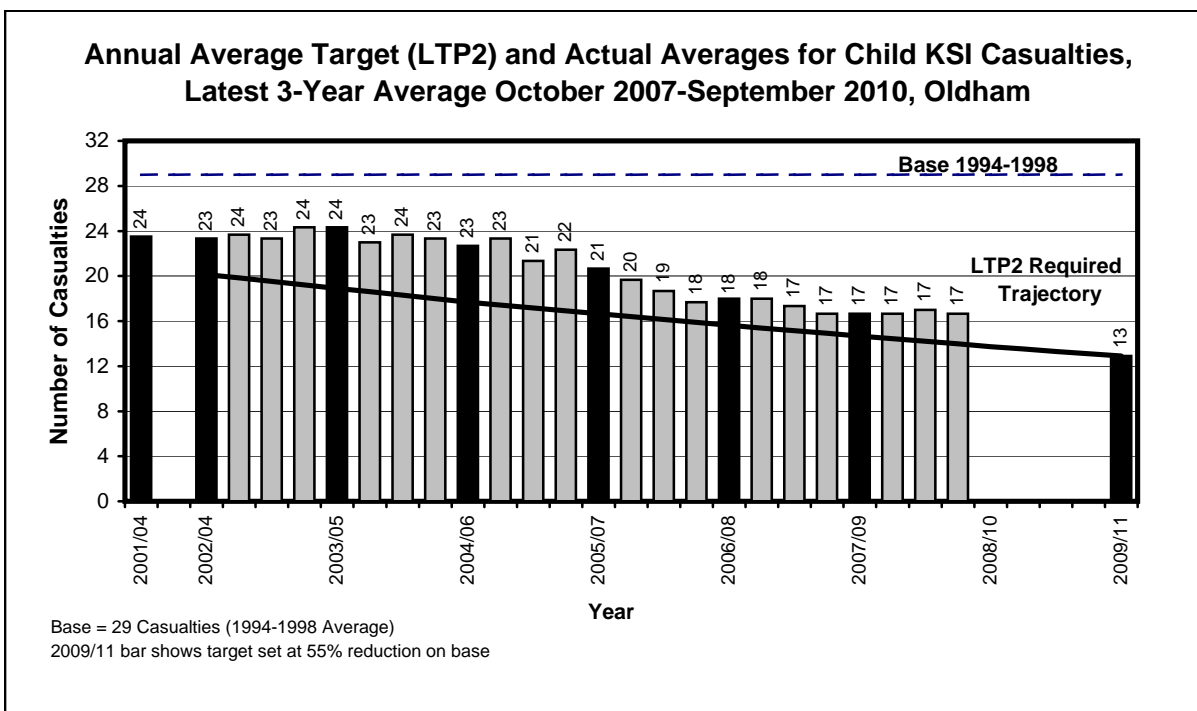
October 2007 - September 2010

Child KSI Casualties: 55% casualty reduction on 1994-1998 baseline by 2010

Oldham Child KSI Casualties, Latest 3-Year Average, from October 07 to September 10

Year	Annual Average		Index	
	Trajectory	Actual	Trajectory	Actual
1994-1998 baseline		29		100
2001-2004: baseline		24		82
2003: average 2002/2003/2004	20	23	70	82
2004: average 2003/2004/2005	19	24	66	85
2005: average 2004/2005/2006	18	23	62	79
2006: average 2005/2006/2007	17	21	58	72
2007: average 2006/2007/2008	16	18	55	63
2008: average 2007/2008/2009	15	17	51	58
<i>Average Apr 07-Mar 10</i>	14	17	50	58
<i>Average Jul 07-Jun 10</i>	14	17	50	59
<i>Average Oct 07-Sep 10</i>	14	17	49	58
2009: average 2008/2009/2010	14		48	
Target 2010: average 2009/2010/2011	13		45	

Note: The casualties for the target year will not be known until February/March 2012 (when the full 2011 data is available)





LTP2 FACTSHEET

GREATER MANCHESTER TRANSPORTATION UNIT

OLDHAM SLIGHTLY INJURED CASUALTY STATISTICS

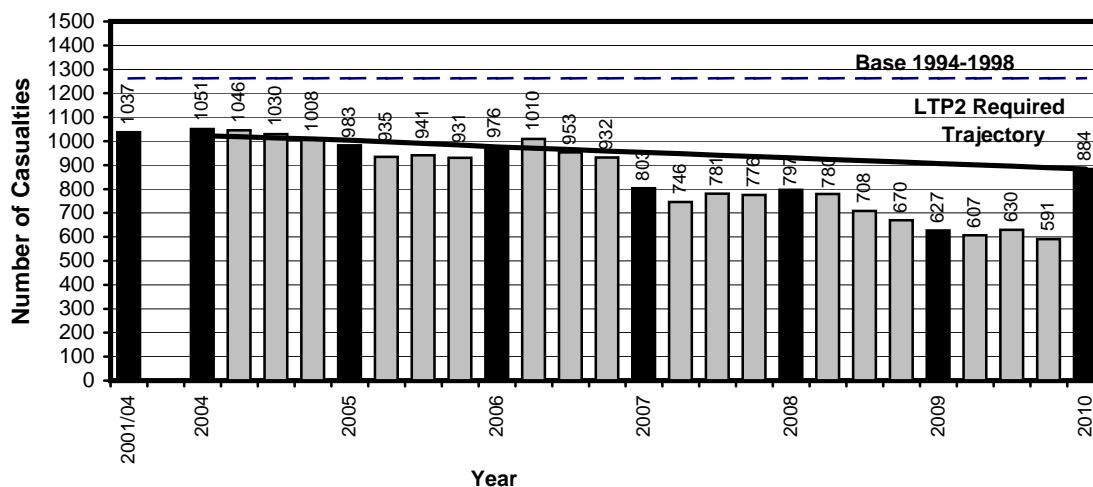
October 2009 - September 2010

Slight Casualties: 30% casualty reduction on 1994-1998 baseline by 2010

Oldham Slight Casualties, Latest 12 Months, from October 09 to September 10

Target (LTP2) and Actual Numbers for Slight Casualties				
Year	Number		Index	
	Trajectory	Actual	Trajectory	Actual
1994-1998 baseline		1262		100
2001-2004: baseline		1037		82
2004	1023	1051	81	83
2005	1004	983	80	78
2006	976	976	77	77
2007	953	803	76	64
2008	930	797	74	63
2009	907	627	72	50
<i>Apr 09-Mar 10</i>	901	607	71	48
<i>Jul 09-Jun 10</i>	895	630	71	50
<i>Oct 09-Sep 10</i>	889	591	70	47
Target 2010	884		70	

Target (LTP2) and Actual Numbers for Slight Casualties, Latest 12 Months October 2009-September 2010, Oldham



Base = 1262 Casualties (1994-1998 Average)
 2010 bar shows target set at 30% reduction on base

Greater Manchester Transportation Unit



PEDESTRIAN AND PEDAL CYCLE FACTSHEET

OLDHAM PEDESTRIAN AND PEDAL CYCLE CASUALTY STATISTICS

October 08 - September 09, October 09 - September 10, Base

Oldham Pedestrian Casualties by Road Class

October 08 - September 09, October 09 - September 10, Base

Road Class	Base ⁽¹⁾ Ave 1994-98	Oct 08 - Sep 09	Oct 09 - Sep 10	% Change (09 - 10/ 08 - 09)	% Change (09 - 10 /Base)
Motorway ⁽²⁾	0	0	0	-(3)	-(3)
A Class Roads	98	28	61	117.9	-37.8
B Class Roads	30	15	9	-40.0	-70.0
Minor Roads	144	69	70	1.4	-51.4
Non-Motorways	272	112	140	25.0	-48.5
Total	272	112	140	25.0	-48.5

Oldham Pedal Cycle Casualties by Road Class

October 08 - September 09, October 09 - September 10, Base

Road Class	Base ⁽¹⁾ Ave 1994-98	Oct 08 - Sep 09	Oct 09 - Sep 10	% Change (09 - 10/ 08 - 09)	% Change (09 - 10 /Base)
Motorway ⁽²⁾	0	0	0	-(3)	-(3)
A Class Roads	29	21	20	-4.8	-31.0
B Class Roads	9	4	1	-75.0	-88.9
Minor Roads	42	16	19	18.8	-54.8
Non-Motorways	79	41	40	-2.4	-49.4
Total	80	41	40	-2.4	-50.0

Notes :-

1. Base figures are rounded to the nearest whole number
2. Motorways include the A627(M)
3. Casualty numbers too small to make % changes meaningful



LTP2 FACTSHEET

GREATER MANCHESTER TRANSPORTATION UNIT

ROCHDALE KSI CASUALTY STATISTICS

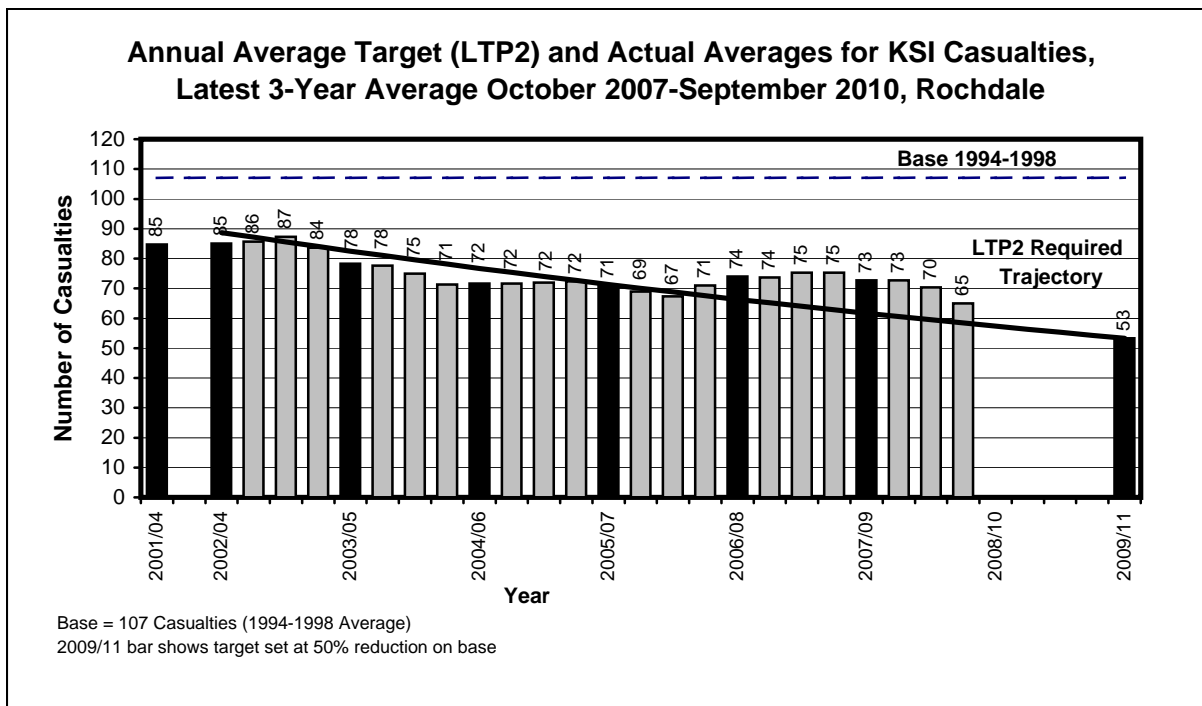
October 2007 - September 2010

KSI Casualties: 50% casualty reduction on 1994-1998 baseline by 2010

Rochdale KSI Casualties, Latest 3-Year Average, from October 07 to September 10

Annual Average Target (LTP2) and Actual Averages for KSI Casualties				
Year	Annual Average		Index	
	Trajectory	Actual	Trajectory	Actual
1994-1998 baseline		107		100
2001-2004: baseline		85		80
2003: average 2002/2003/2004	89	85	83	80
2004: average 2003/2004/2005	82	78	77	73
2005: average 2004/2005/2006	77	72	72	67
2006: average 2005/2006/2007	71	71	67	67
2007: average 2006/2007/2008	66	74	62	69
2008: average 2007/2008/2009	62	73	58	68
<i>Average Apr 07-Mar 10</i>	61	73	57	68
<i>Average Jul 07-Jun 10</i>	59	70	56	66
<i>Average Oct 07-Sep 10</i>	58	65	55	61
2009: average 2008/2009/2010	57		54	
Target 2010: average 2009/2010/2011	53		50	

Note: The casualties for the target year will not be known until February/March 2012 (when the full 2011 data is available)





LTP2 FACTSHEET

GREATER MANCHESTER TRANSPORTATION UNIT

ROCHDALE CHILD KSI CASUALTY STATISTICS
October 2007 - September 2010

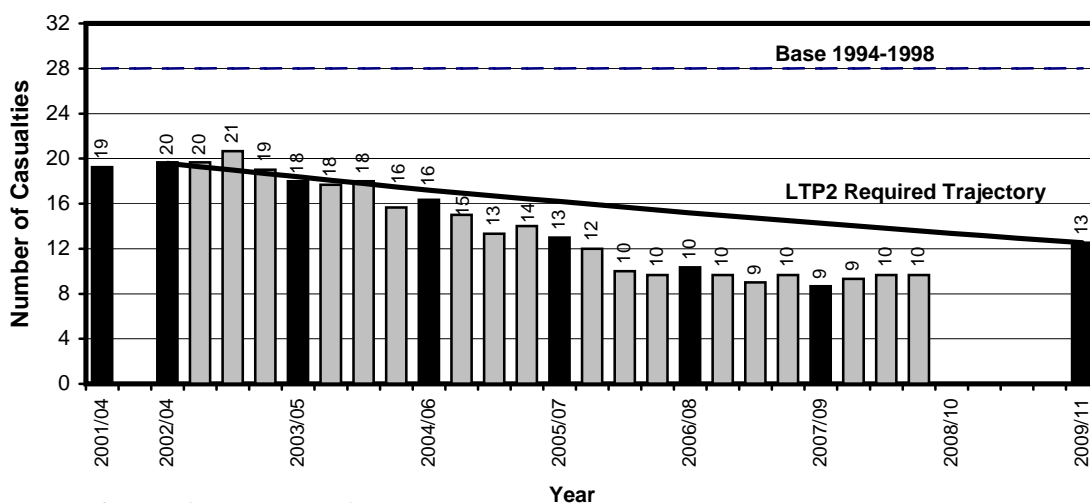
Child KSI Casualties: 55% casualty reduction on 1994-1998 baseline by 2010

Rochdale Child KSI Casualties, Latest 3-Year Average, from January October 07 to September 10

Annual Average Target (LTP2) and Actual Averages for Child KSI Casualties				
Year	Annual Average		Index	
	Trajectory	Actual	Trajectory	Actual
1994-1998 baseline		28		100
2001-2004: baseline		19		69
2003: average 2002/2003/2004	20	20	70	71
2004: average 2003/2004/2005	18	18	66	65
2005: average 2004/2005/2006	17	16	62	59
2006: average 2005/2006/2007	16	13	58	47
2007: average 2006/2007/2008	15	10	55	37
2008: average 2007/2008/2009	14	9	51	31
Average Apr 07-Mar 10	14	9	50	34
Average Jul 07-Jun 10	14	10	50	35
Average Oct 07-Sep 10	14	10	49	35
2009: average 2008/2009/2010	13		48	
Target 2010: average 2009/2010/2011	13		45	

Note: The casualties for the target year will not be known until February/March 2012 (when the full 2011 data is available)

**Annual Average Target (LTP2) and Actual Averages for Child KSI Casualties,
Latest 3-Year Average October 2007-September 2010, Rochdale**



Base = 28 Casualties (1994-1998 Average)
2009/11 bar shows target set at 55% reduction on base



LTP2 FACTSHEET

GREATER MANCHESTER TRANSPORTATION UNIT

ROCHDALE SLIGHTLY INJURED CASUALTY STATISTICS

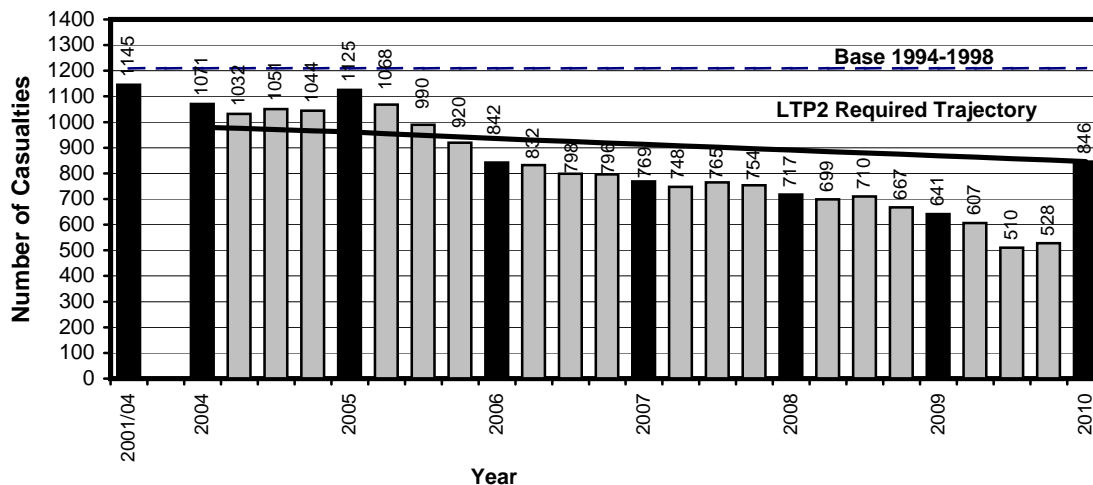
October 2009 - September 2010

Slight Casualties: 30% casualty reduction on 1994-1998 baseline by 2010

Rochdale Slight Casualties, Latest 12 Months, from October 09 to September 10

Target (LTP2) and Actual Numbers for Slight Casualties				
Year	Number		Index	
	Trajectory	Actual	Trajectory	Actual
1994-1998 baseline		1209		100
2001-2004: baseline		1145		95
2004	980	1071	81	89
2005	962	1125	80	93
2006	935	842	77	70
2007	913	769	76	64
2008	891	717	74	59
2009	869	641	72	53
<i>Apr 09-Mar 10</i>	863	607	71	50
<i>Jul 09-Jun 10</i>	857	510	71	42
<i>Oct 09-Sep 10</i>	852	528	70	44
Target 2010	846		70	

**Target (LTP2) and Actual Numbers for Slight Casualties,
Latest 12 Months October 2009-September 2010, Rochdale**



Base = 1209 Casualties (1994-1998 Average)
 2010 bar shows target set at 30% reduction on base

Greater Manchester Transportation Unit



PEDESTRIAN AND PEDAL CYCLE FACTSHEET

ROCHDALE PEDESTRIAN AND PEDAL CYCLE CASUALTY STATISTICS

October 08 - September 09, October 09 - September 10, Base

Rochdale Pedestrian Casualties by Road Class

October 08 - September 09, October 09 - September 10, Base

Road Class	Base ⁽¹⁾ Ave 1994-98	Oct 08 - Sep 09	Oct 09 - Sep 10	% Change (09 - 10/ 08 - 09)	% Change (09 - 10 /Base)
Motorway ⁽²⁾	0	0	0	-(3)	-(3)
A Class Roads	96	51	44	-13.7	-54.2
B Class Roads	27	16	16	0.0	-40.7
Minor Roads	119	69	54	-21.7	-54.6
Non-Motorways	243	136	114	-16.2	-53.1
Total	243	136	114	-16.2	-53.1

Rochdale Pedal Cycle Casualties by Road Class

October 08 - September 09, October 09 - September 10, Base

Road Class	Base ⁽¹⁾ Ave 1994-98	Oct 08 - Sep 09	Oct 09 - Sep 10	% Change (09 - 10/ 08 - 09)	% Change (09 - 10 /Base)
Motorway ⁽²⁾	0	0	0	-(3)	-(3)
A Class Roads	34	24	10	-58.3	-70.6
B Class Roads	8	2	5	150.0	-37.5
Minor Roads	36	12	12	0.0	-66.7
Non-Motorways	78	38	27	-28.9	-65.4
Total	78	38	27	-28.9	-65.4

Notes :-

1. Base figures are rounded to the nearest whole number
2. Motorways include the A627(M)
3. Casualty numbers too small to make % changes meaningful



LTP2 FACTSHEET

GREATER MANCHESTER TRANSPORTATION UNIT

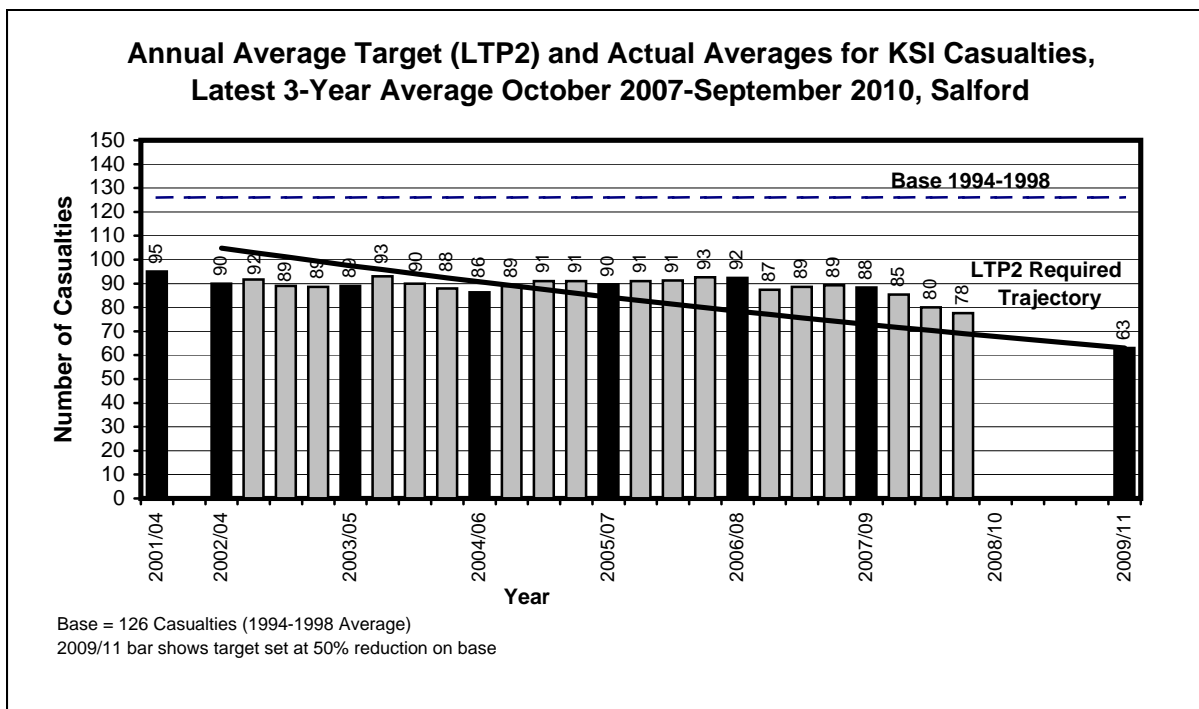
SALFORD KSI CASUALTY STATISTICS
October 2007 - September 2010

KSI Casualties: 50% casualty reduction on 1994-1998 baseline by 2010

Salford KSI Casualties, Latest 3-Year Average, from October 07 to September 10

Annual Average Target (LTP2) and Actual Averages for KSI Casualties				
Year	Annual Average		Index	
	Trajectory	Actual	Trajectory	Actual
1994-1998 baseline		126		100
2001-2004: baseline		95		75
2003: average 2002/2003/2004	105	90	83	71
2004: average 2003/2004/2005	97	89	77	71
2005: average 2004/2005/2006	91	86	72	69
2006: average 2005/2006/2007	84	90	67	71
2007: average 2006/2007/2008	78	92	62	73
2008: average 2007/2008/2009	73	88	58	70
Average Apr 07-Mar 10	72	85	57	68
Average Jul 07-Jun 10	70	80	56	63
Average Oct 07-Sep 10	69	78	55	62
2009: average 2008/2009/2010	68		54	
Target 2010: average 2009/2010/2011	63		50	

Note: The casualties for the target year will not be known until February/March 2012 (when the full 2011 data is available)





LTP2 FACTSHEET

GREATER MANCHESTER TRANSPORTATION UNIT

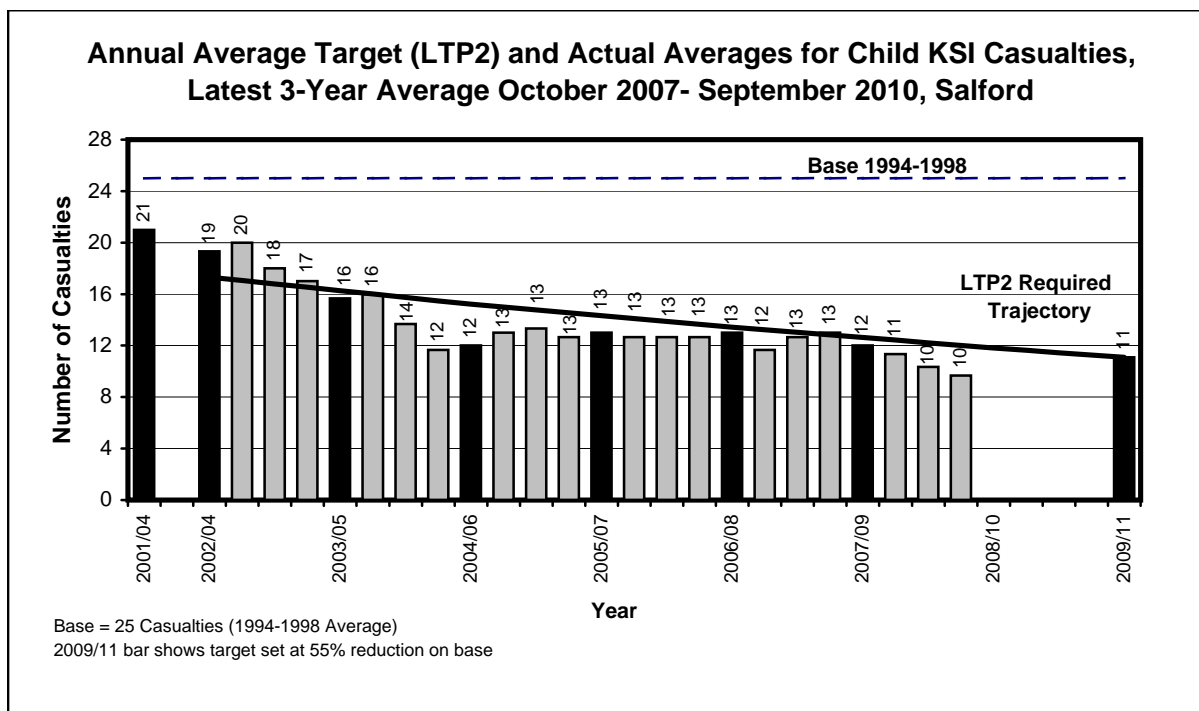
SALFORD CHILD KSI CASUALTY STATISTICS
October 2007 - September 2010

Child KSI Casualties: 55% casualty reduction on 1994-1998 baseline by 2010

Salford Child KSI Casualties, Latest 3-Year Average, from October 07 to September 10

Year	Annual Average		Index	
	Trajectory	Actual	Trajectory	Actual
1994-1998 baseline		25		100
2001-2004: baseline		21		85
2003: average 2002/2003/2004	17	19	70	79
2004: average 2003/2004/2005	16	16	66	64
2005: average 2004/2005/2006	15	12	62	49
2006: average 2005/2006/2007	14	13	58	53
2007: average 2006/2007/2008	13	13	55	53
2008: average 2007/2008/2009	13	12	51	49
<i>Average Apr 07-Mar 10</i>	12	11	50	46
<i>Average Jul 07-Jun 10</i>	12	10	50	42
<i>Average Oct 07-Sep 10</i>	12	10	49	39
2009: average 2008/2009/2010	12		48	
Target 2010: average 2009/2010/2011	11		45	

Note: The casualties for the target year will not be known until February/March 2012 (when the full 2011 data is available)





LTP2 FACTSHEET

GREATER MANCHESTER TRANSPORTATION UNIT

SALFORD SLIGHTLY INJURED CASUALTY STATISTICS

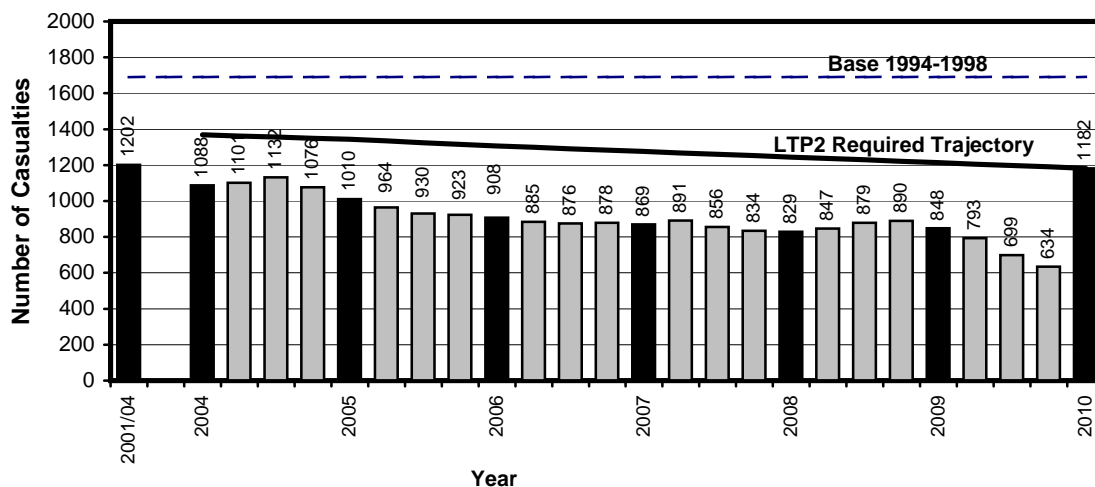
October 2009 - September 2010

Slight Casualties: 30% casualty reduction on 1994-1998 baseline by 2010

Salford Slight Casualties, Latest 12 Months, from October 09 to September 10

Target (LTP2) and Actual Numbers for Slight Casualties				
Year	Number		Index	
	Trajectory	Actual	Trajectory	Actual
1994-1998 baseline		1689		100
2001-2004: baseline		1202		71
2004	1369	1088	81	64
2005	1344	1010	80	60
2006	1307	908	77	54
2007	1276	869	76	51
2008	1245	829	74	49
2009	1214	848	72	50
<i>Apr 09-Mar 10</i>	1206	793	71	47
<i>Jul 09-Jun 10</i>	1198	699	71	41
<i>Oct 09-Sep 10</i>	1190	634	70	38
Target 2010	1182		70	

Target (LTP2) and Actual Numbers for Slight Casualties, Latest 12 Months October 2009- September 2010, Salford



Base = 1689 Casualties (1994-1998 Average)

2010 bar shows target set at 30% reduction on base

Greater Manchester Transportation Unit



PEDESTRIAN AND PEDAL CYCLE FACTSHEET

SALFORD PEDESTRIAN AND PEDAL CYCLE CASUALTY STATISTICS

October 08 - September 09, October 09 - September 10, Base

Salford Pedestrian Casualties by Road Class

October 08 - September 09, October 09 - September 10, Base

Road Class	Base ⁽¹⁾ Ave 1994-98	Oct 08 - Sep 09	Oct 09 - Sep 10	% Change (09 - 10/ 08 - 09)	% Change (09 - 10 /Base)
Motorway	1	1	1	-(3)	-(3)
A Class Roads ⁽²⁾	118	45	55	22.2	-53.4
B Class Roads	34	19	18	-5.3	-47.1
Minor Roads	104	50	26	-48.0	-75.0
Non-Motorways	256	114	99	-13.2	-61.3
Total	257	115	100	-13.0	-61.1

Salford Pedal Cycle Casualties by Road Class

October 08 - September 09, October 09 - September 10, Base

Road Class	Base ⁽¹⁾ Ave 1994-98	Oct 08 - Sep 09	Oct 09 - Sep 10	% Change (09 - 10/ 08 - 09)	% Change (09 - 10 /Base)
Motorway	1	0	0	-(3)	-(3)
A Class Roads ⁽²⁾	53	37	40	8.1	-24.5
B Class Roads	13	11	11	0.0	-15.4
Minor Roads	51	18	20	11.1	-60.8
Non-Motorways	117	66	71	7.6	-39.3
Total	118	66	71	7.6	-39.8

Notes :-

1. Base figures are rounded to the nearest whole number
2. A roads include the A580 which was de-trunked on 1 April 2004
3. Casualty numbers too small to make % changes meaningful



LTP2 FACTSHEET

GREATER MANCHESTER TRANSPORTATION UNIT

STOCKPORT KSI CASUALTY STATISTICS

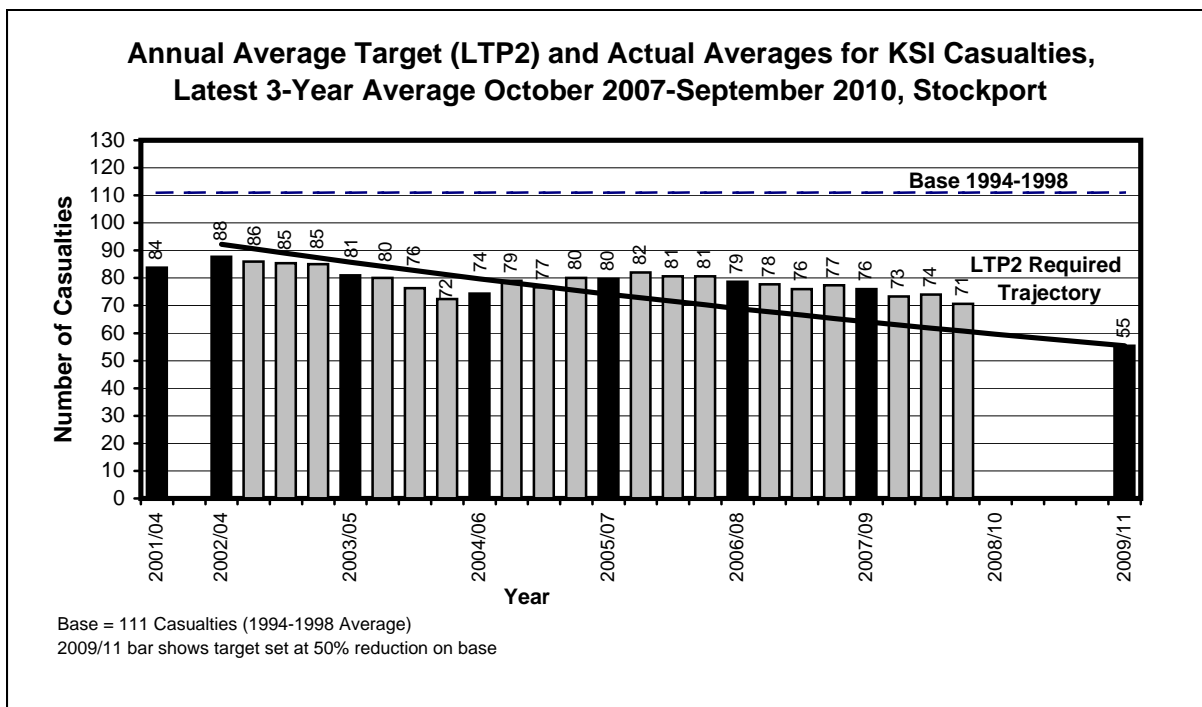
October 2007 - September 2010

KSI Casualties: 50% casualty reduction on 1994-1998 baseline by 2010

Stockport KSI Casualties, Latest 3-Year Average, from October 07 to September 10

Annual Average Target (LTP2) and Actual Averages for KSI Casualties				
Year	Annual Average		Index	
	Trajectory	Actual	Trajectory	Actual
1994-1998 baseline		111		100
2001-2004: baseline		84		76
2003: average 2002/2003/2004	92	88	83	79
2004: average 2003/2004/2005	86	81	77	73
2005: average 2004/2005/2006	80	74	72	67
2006: average 2005/2006/2007	74	80	67	72
2007: average 2006/2007/2008	69	79	62	71
2008: average 2007/2008/2009	64	76	58	69
Average Apr 07-Mar 10	63	73	57	66
Average Jul 07-Jun 10	62	74	56	67
Average Oct 07-Sep 10	61	71	55	64
2009: average 2008/2009/2010	60		54	
Target 2010: average 2009/2010/2011	55		50	

Note: The casualties for the target year will not be known until February/March 2012 (when the full 2011 data is available)





LTP2 FACTSHEET

GREATER MANCHESTER TRANSPORTATION UNIT

STOCKPORT CHILD KSI CASUALTY STATISTICS

October 2007 - September 2010

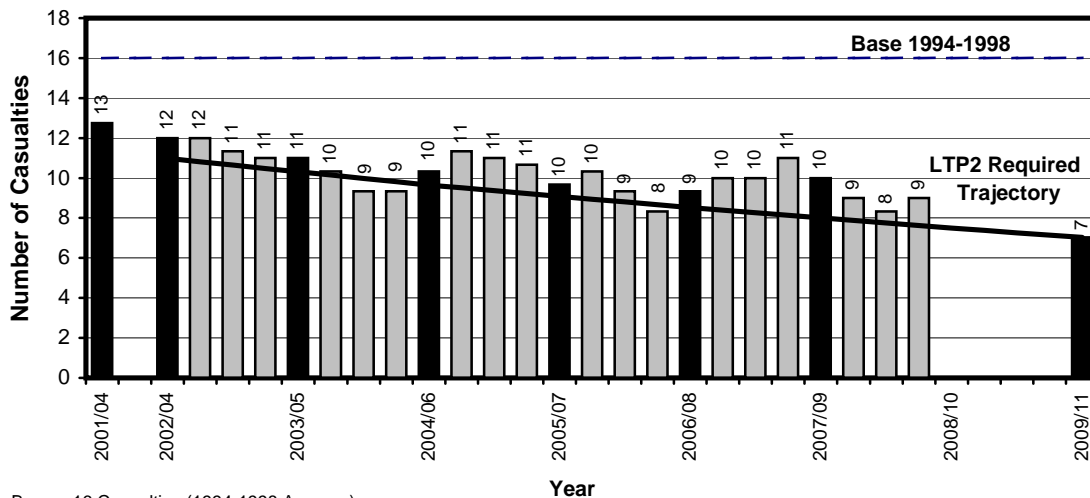
Child KSI Casualties: 55% casualty reduction on 1994-1998 baseline by 2010

Stockport Child KSI Casualties, Latest 3-Year Average, from October 07 to September 10

Year	Annual Average		Index	
	Trajectory	Actual	Trajectory	Actual
1994-1998 baseline		16		100
2001-2004: baseline		13		82
2003: average 2002/2003/2004	11	12	70	77
2004: average 2003/2004/2005	10	11	66	71
2005: average 2004/2005/2006	10	10	62	66
2006: average 2005/2006/2007	9	10	58	62
2007: average 2006/2007/2008	9	9	55	60
2008: average 2007/2008/2009	8	10	51	64
<i>Average Apr 07-Mar 10</i>	8	9	50	58
<i>Average Jul 07-Jun 10</i>	8	8	50	53
<i>Average Oct 07-Sep 10</i>	8	9	49	58
2009: average 2008/2009/2010	7		48	
Target 2010: average 2009/2010/2011	7		45	

Note: The casualties for the target year will not be known until February/March 2012 (when the full 2011 data is available)

Annual Average Target (LTP2) and Actual Averages for Child KSI Casualties, Latest 3-Year Average October 2007-September 2010, Stockport



Base = 16 Casualties (1994-1998 Average)
 2009/11 bar shows target set at 55% reduction on base



LTP2 FACTSHEET

GREATER MANCHESTER TRANSPORTATION UNIT

STOCKPORT SLIGHTLY INJURED CASUALTY STATISTICS

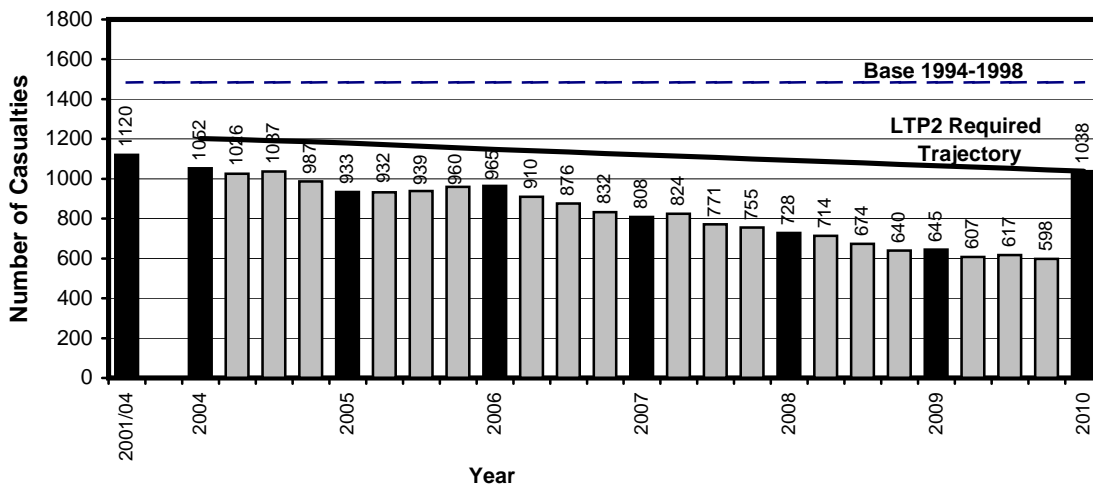
October 2009 - September 2010

Slight Casualties: 30% casualty reduction on 1994-1998 baseline by 2010

Stockport Slight Casualties, Latest 12 Months, from October 09 to September 10

Target (LTP2) and Actual Numbers for Slight Casualties				
Year	Number		Index	
	Trajectory	Actual	Trajectory	Actual
1994-1998 baseline		1483		100
2001-2004: baseline		1120		75
2004	1202	1052	81	71
2005	1180	933	80	63
2006	1148	965	77	65
2007	1120	808	76	54
2008	1093	728	74	49
2009	1066	645	72	43
<i>Apr 09-Mar 10</i>	1059	607	71	41
<i>Jul 09-Jun 10</i>	1052	617	71	42
<i>Oct 09-Sep 10</i>	1045	598	70	40
Target 2010	1038		70	

**Target (LTP2) and Actual Numbers for Slight Casualties,
Latest 12 Months October 2009-September 2010, Stockport**



Base = 1483 Casualties (1994-1998 Average)
2010 bar shows target set at 30% reduction on base

Greater Manchester Transportation Unit



PEDESTRIAN AND PEDAL CYCLE FACTSHEET

STOCKPORT PEDESTRIAN AND PEDAL CYCLE CASUALTY STATISTICS

October 08 - September 09, October 09 - September 10, Base

Stockport Pedestrian Casualties by Road Class

October 08 - September 09, October 09 - September 10, Base

Road Class	Base ⁽¹⁾ Ave 1994-98	Oct 08 - Sep 09	Oct 09 - Sep 10	% Change (09 - 10/ 08 - 09)	% Change (09 - 10 /Base)
Motorway	1	1	0	-(3)	-(3)
A Class Roads ⁽²⁾	83	55	44	-20.0	-47.0
B Class Roads	33	15	17	13.3	-48.5
Minor Roads	108	58	63	8.6	-41.7
Non-Motorways	224	128	124	-3.1	-44.6
Total	225	129	124	-3.9	-44.9

Stockport Pedal Cycle Casualties by Road Class

October 08 - September 09, October 09 - September 10, Base

Road Class	Base ⁽¹⁾ Ave 1994-98	Oct 08 - Sep 09	Oct 09 - Sep 10	% Change (09 - 10/ 08 - 09)	% Change (09 - 10 /Base)
Motorway	0	0	0	-(3)	-(3)
A Class Roads ⁽²⁾	46	28	37	32.1	-19.6
B Class Roads	16	14	14	0.0	-12.5
Minor Roads	52	32	27	-15.6	-48.1
Non-Motorways	114	74	78	5.4	-31.6
Total	115	74	78	5.4	-32.2

Notes :-

1. Base figures are rounded to the nearest whole number
2. A roads include the A6 and A523, both of which were de-trunked on 17 May 2002
3. Casualty numbers too small to make % changes meaningful



LTP2 FACTSHEET

GREATER MANCHESTER TRANSPORTATION UNIT

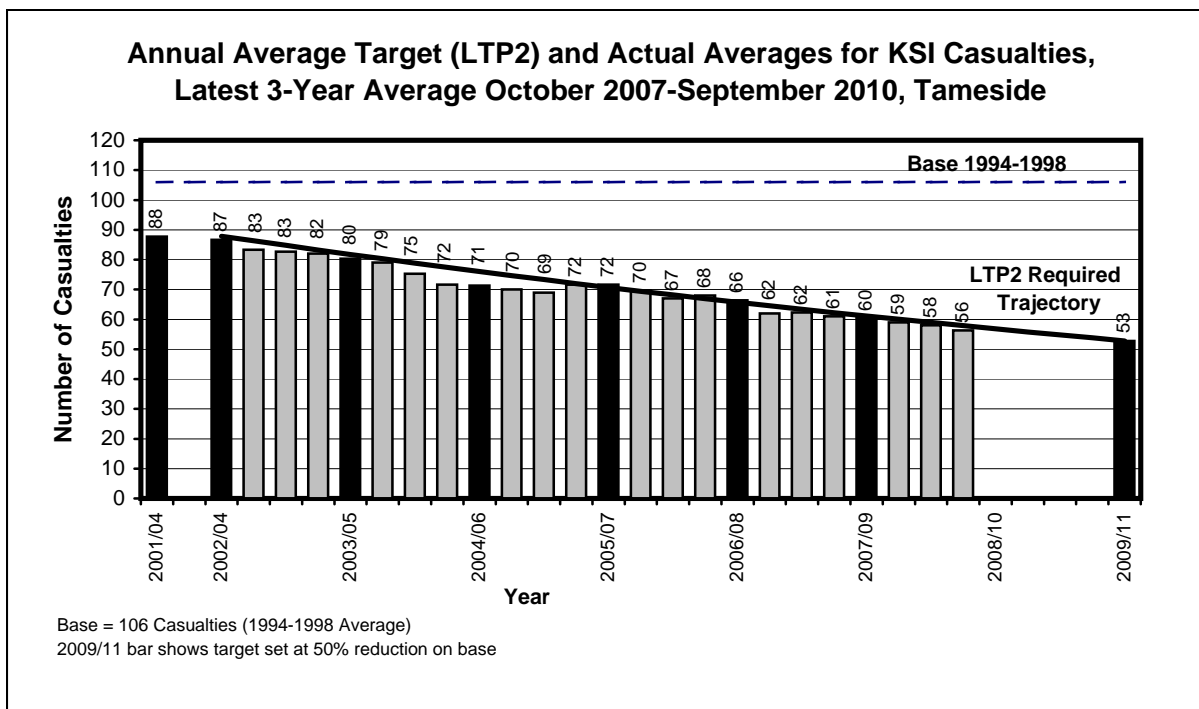
TAMESIDE KSI CASUALTY STATISTICS
October 2007 - September 2010

KSI Casualties: 50% casualty reduction on 1994-1998 baseline by 2010

Tameside KSI Casualties, Latest 3-Year Average, from October 07 to September 10

Annual Average Target (LTP2) and Actual Averages for KSI Casualties				
Year	Annual Average		Index	
	Trajectory	Actual	Trajectory	Actual
1994-1998 baseline		106		100
2001-2004: baseline		88		83
2003: average 2002/2003/2004	88	87	83	82
2004: average 2003/2004/2005	82	80	77	76
2005: average 2004/2005/2006	76	71	72	68
2006: average 2005/2006/2007	71	72	67	68
2007: average 2006/2007/2008	66	66	62	63
2008: average 2007/2008/2009	61	60	58	57
Average Apr 07-Mar 10	60	59	57	56
Average Jul 07-Jun 10	59	58	56	55
Average Oct 07-Sep 10	58	56	55	53
2009: average 2008/2009/2010	57		54	
Target 2010: average 2009/2010/2011	53		50	

Note: The casualties for the target year will not be known until February/March 2012 (when the full 2011 data is available)





LTP2 FACTSHEET

GREATER MANCHESTER TRANSPORTATION UNIT

TAMESIDE CHILD KSI CASUALTY STATISTICS

October 2007 - September 2010

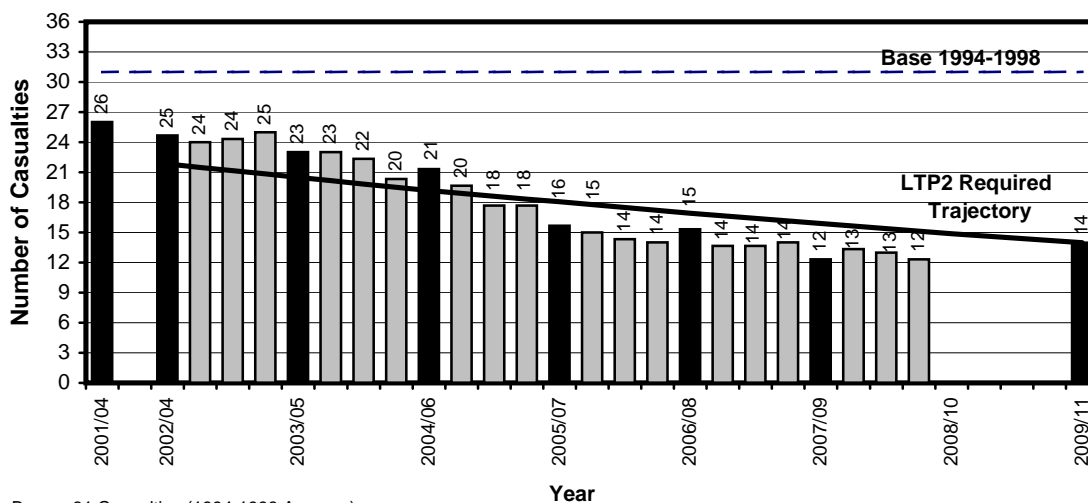
Child KSI Casualties: 55% casualty reduction on 1994-1998 baseline by 2010

Tameside Child KSI Casualties, Latest 3-Year Average, from October 07 to September 10

Year	Annual Average		Index	
	Trajectory	Actual	Trajectory	Actual
1994-1998 baseline		31		100
2001-2004: baseline		26		84
2003: average 2002/2003/2004	22	25	70	80
2004: average 2003/2004/2005	20	23	66	74
2005: average 2004/2005/2006	19	21	62	69
2006: average 2005/2006/2007	18	16	58	51
2007: average 2006/2007/2008	17	15	55	49
2008: average 2007/2008/2009	16	12	51	40
<i>Average Apr 07-Mar 10</i>	16	13	50	43
<i>Average Jul 07-Jun 10</i>	15	13	50	42
<i>Average Oct 07-Sep 10</i>	15	12	49	40
2009: average 2008/2009/2010	15		48	
Target 2010: average 2009/2010/2011	14		45	

Note: The casualties for the target year will not be known until February/March 2012 (when the full 2011 data is available)

Annual Average Target (LTP2) and Actual Averages for Child KSI Casualties, Latest 3-Year Average October 2007-September 2010, Tameside



Base = 31 Casualties (1994-1998 Average)
2009/11 bar shows target set at 55% reduction on base



LTP2 FACTSHEET

GREATER MANCHESTER TRANSPORTATION UNIT

TAMESIDE SLIGHTLY INJURED CASUALTY STATISTICS

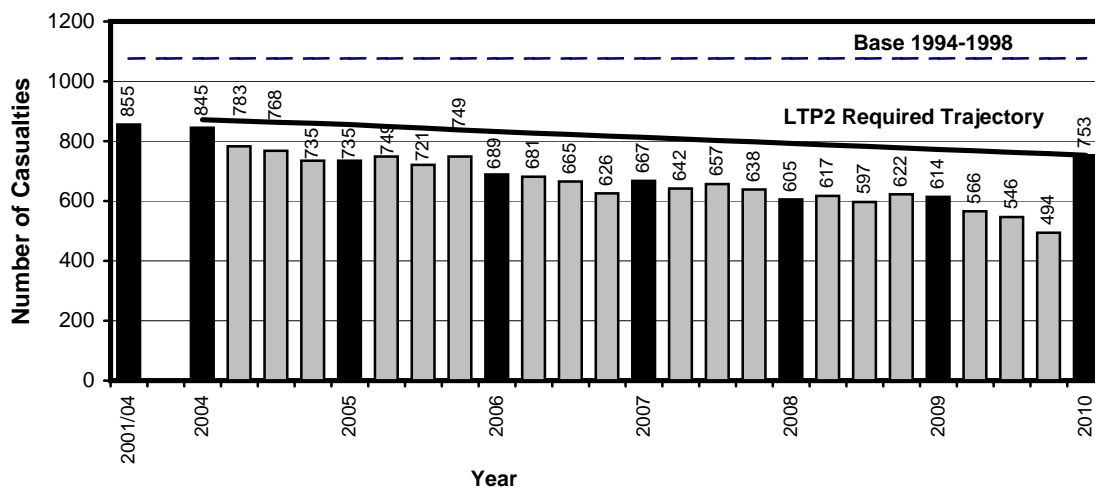
October 2009 - September 2010

Slight Casualties: 30% casualty reduction on 1994-1998 baseline by 2010

Tameside Slight Casualties, Latest 12 Months, from October 09 to September 10

Target (LTP2) and Actual Numbers for Slight Casualties				
Year	Number		Index	
	Trajectory	Actual	Trajectory	Actual
1994-1998 baseline		1076		100
2001-2004: baseline		855		80
2004	872	845	81	79
2005	856	735	80	68
2006	832	689	77	64
2007	812	667	76	62
2008	793	605	74	56
2009	773	614	72	57
Apr 09-Mar 10	768	566	71	53
Jul 09-Jun 10	763	546	71	51
Oct 09-Sep 10	758	494	70	46
Target 2010	753		70	

Target (LTP2) and Actual Numbers for Slight Casualties,
Latest 12 Months October 2009-September 2010, Tameside



Base = 1076 Casualties (1994-1998 Average)

2010 bar shows target set at 30% reduction on base

Greater Manchester Transportation Unit



PEDESTRIAN AND PEDAL CYCLE FACTSHEET

TAMESIDE PEDESTRIAN AND PEDAL CYCLE CASUALTY STATISTICS

October 08 - September 09, October 09 - September 10, Base

Tameside Pedestrian Casualties by Road Class

October 08 - September 09, October 09 - September 10, Base

Road Class	Base ⁽¹⁾ Ave 1994-98	Oct 08 - Sep 09	Oct 09 - Sep 10	% Change (09 - 10/ 08 - 09)	% Change (09 - 10 /Base)
Motorway	0	0	0	-(3)	-(3)
A Class Roads ⁽²⁾	76	33	38	15.2	-50.0
B Class Roads	27	16	13	-18.8	-51.9
Minor Roads	117	56	48	-14.3	-59.0
Non-Motorways	220	105	99	-5.7	-55.0
Total	221	105	99	-5.7	-55.2

Tameside Pedal Cycle Casualties by Road Class

October 08 - September 09, October 09 - September 10, Base

Road Class	Base ⁽¹⁾ Ave 1994-98	Oct 08 - Sep 09	Oct 09 - Sep 10	% Change (09 - 10/ 08 - 09)	% Change (09 - 10 /Base)
Motorway	0	0	0	-(3)	-(3)
A Class Roads ⁽²⁾	26	17	19	11.8	-26.9
B Class Roads	8	5	6	20.0	-25.0
Minor Roads	45	13	15	15.4	-66.7
Non-Motorways	78	35	40	14.3	-48.7
Total	78	35	40	14.3	-48.7

Notes :-

1. Base figures are rounded to the nearest whole number
2. A roads include the A57 and A628(T)
The A57 between Laburnum Road and the M60 (J24) was de-trunked on 1 May 2002
3. Casualty numbers too small to make % changes meaningful



LTP2 FACTSHEET

GREATER MANCHESTER TRANSPORTATION UNIT

TRAFFORD KSI CASUALTY STATISTICS

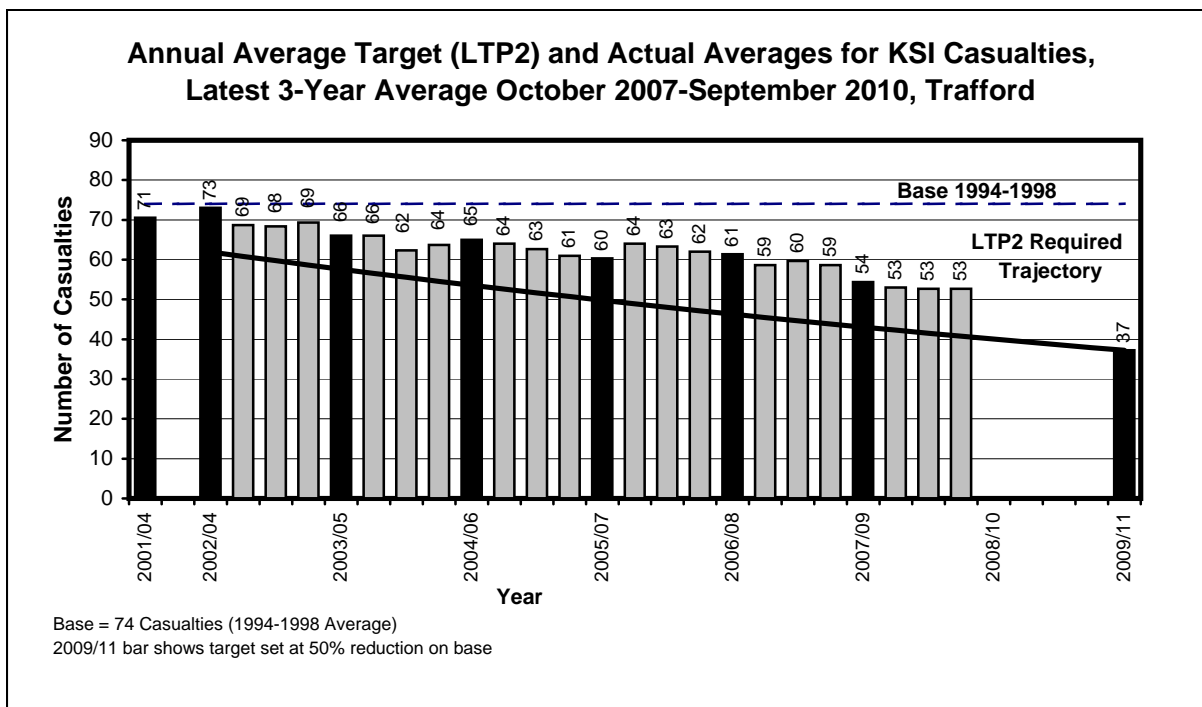
October 2007 - September 2010

KSI Casualties: 50% casualty reduction on 1994-1998 baseline by 2010

Trafford KSI Casualties, Latest 3-Year Average, from October 07 to September 10

Annual Average Target (LTP2) and Actual Averages for KSI Casualties				
Year	Annual Average		Index	
	Trajectory	Actual	Trajectory	Actual
1994-1998 baseline		74		100
2001-2004: baseline		71		95
2003: average 2002/2003/2004	62	73	83	98
2004: average 2003/2004/2005	58	66	77	89
2005: average 2004/2005/2006	54	65	72	87
2006: average 2005/2006/2007	50	60	67	81
2007: average 2006/2007/2008	46	61	62	82
2008: average 2007/2008/2009	43	54	58	73
Average Apr 07-Mar 10	42	53	57	71
Average Jul 07-Jun 10	42	53	56	71
Average Oct 07-Sep 10	41	53	55	71
2009: average 2008/2009/2010	40		54	
Target 2010: average 2009/2010/2011	37		50	

Note: The casualties for the target year will not be known until February/March 2012 (when the full 2011 data is available)





LTP2 FACTSHEET

GREATER MANCHESTER TRANSPORTATION UNIT

TRAFFORD CHILD KSI CASUALTY STATISTICS

October 2007 - September 2010

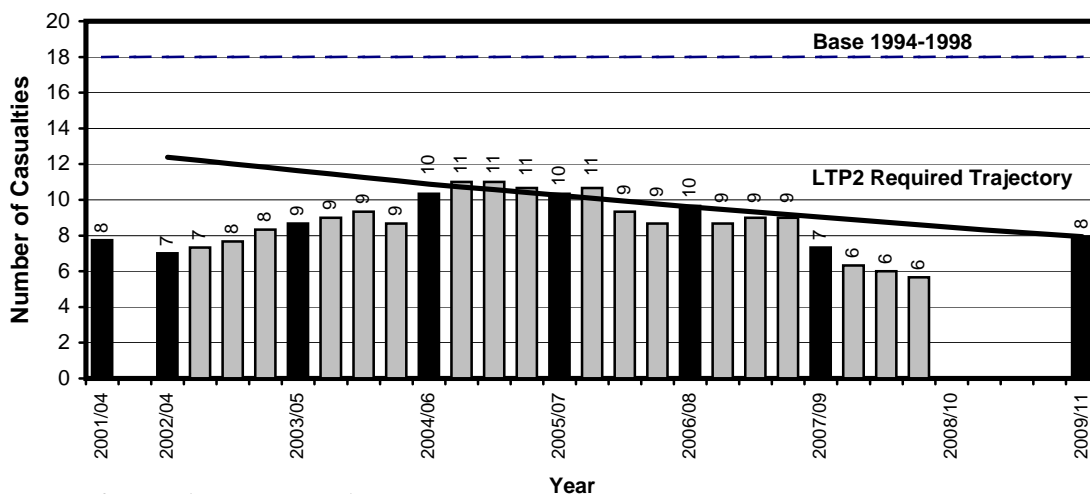
Child KSI Casualties: 55% casualty reduction on 1994-1998 baseline by 2010

Trafford Child KSI Casualties, Latest 3-Year Average, from October 07 to September 10

Year	Annual Average		Index	
	Trajectory	Actual	Trajectory	Actual
1994-1998 baseline		18		100
2001-2004: baseline		8		44
2003: average 2002/2003/2004	12	7	70	40
2004: average 2003/2004/2005	12	9	66	49
2005: average 2004/2005/2006	11	10	62	59
2006: average 2005/2006/2007	10	10	58	59
2007: average 2006/2007/2008	10	10	55	55
2008: average 2007/2008/2009	9	7	51	42
<i>Average Apr 07-Mar 10</i>	9	6	50	36
<i>Average Jul 07-Jun 10</i>	9	6	50	34
<i>Average Oct 07-Sep 10</i>	9	6	49	32
2009: average 2008/2009/2010	8		48	
Target 2010: average 2009/2010/2011	8		45	

Note: The casualties for the target year will not be known until February/March 2012 (when the full 2011 data is available)

Annual Average Target (LTP2) and Actual Averages for Child KSI Casualties, Latest 3-Year Average October 2007-September 2010, Trafford



Base = 18 Casualties (1994-1998 Average)
2009/11 bar shows target set at 55% reduction on base



LTP2 FACTSHEET

GREATER MANCHESTER TRANSPORTATION UNIT

TRAFFORD SLIGHTLY INJURED CASUALTY STATISTICS

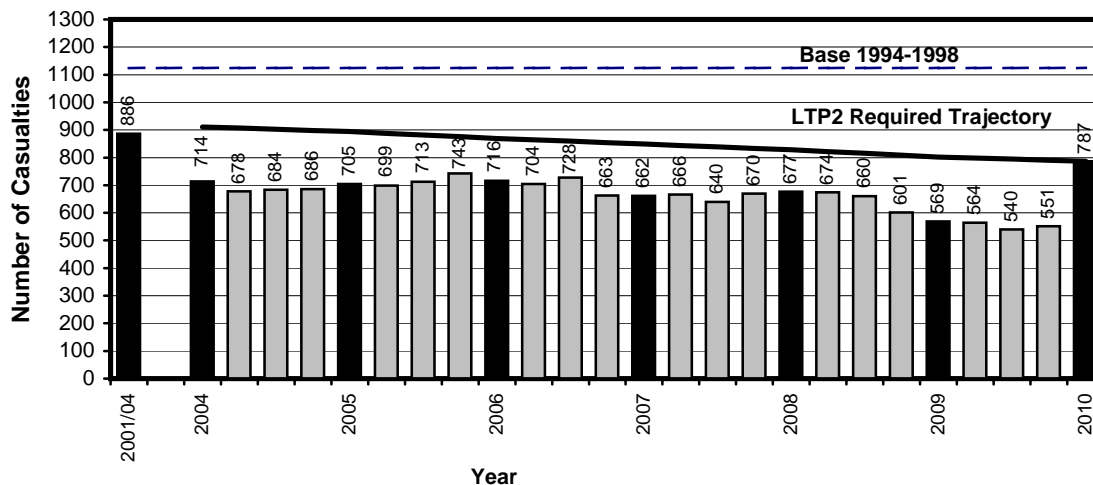
October 2009 - September 2010

Slight Casualties: 30% casualty reduction on 1994-1998 baseline by 2010

Trafford Slight Casualties, Latest 12 Months, from October 09 to September 10

Target (LTP2) and Actual Numbers for Slight Casualties				
Year	Number		Index	
	Trajectory	Actual	Trajectory	Actual
1994-1998 baseline		1124		100
2001-2004: baseline		886		79
2004	911	714	81	64
2005	894	705	80	63
2006	869	716	77	64
2007	849	662	76	59
2008	828	677	74	60
2009	802	569	71	51
Apr 09-Mar 10	798	564	71	50
Jul 09-Jun 10	795	540	71	48
Oct 09-Sep 10	791	551	70	49
Target 2010	787		70	

Target (LTP2) and Actual Numbers for Slight Casualties, Latest 12 Months October 2009-September 2010, Trafford



Base = 1124 Casualties (1994-1998 Average)
 2010 bar shows target set at 30% reduction on base

Greater Manchester Transportation Unit



PEDESTRIAN AND PEDAL CYCLE FACTSHEET

TRAFFORD PEDESTRIAN AND PEDAL CYCLE CASUALTY STATISTICS

October 08 - September 09, October 09 - September 10, Base

Trafford Pedestrian Casualties by Road Class

October 08 - September 09, October 09 - September 10, Base

Road Class	Base ⁽¹⁾ Ave 1994-98	Oct 08 - Sep 09	Oct 09 - Sep 10	% Change (09 - 10/ 08 - 09)	% Change (09 - 10 /Base)
Motorway	1	0	1	-(3)	-(3)
A Class Roads ⁽²⁾	52	24	25	4.2	-51.9
B Class Roads	30	21	9	-57.1	-70.0
Minor Roads	77	45	35	-22.2	-54.5
Non-Motorways	159	90	69	-23.3	-56.6
Total	159	90	70	-22.2	-56.0

Trafford Pedal Cycle Casualties by Road Class

October 08 - September 09, October 09 - September 10, Base

Road Class	Base ⁽¹⁾ Ave 1994-98	Oct 08 - Sep 09	Oct 09 - Sep 10	% Change (09 - 10/ 08 - 09)	% Change (09 - 10 /Base)
Motorway	0	0	0	-(3)	-(3)
A Class Roads ⁽²⁾	38	31	27	-12.9	-28.9
B Class Roads	28	22	16	-27.3	-42.9
Minor Roads	60	44	25	-43.2	-58.3
Non-Motorways	126	97	68	-29.9	-46.0
Total	126	97	68	-29.9	-46.0

Notes :-

1. Base figures are rounded to the nearest whole number
2. A roads include the A6144. The A6144 was reclassified from the A6144(M) on 24 May 2006
3. Casualty numbers too small to make % changes meaningful



LTP2 FACTSHEET

GREATER MANCHESTER TRANSPORTATION UNIT

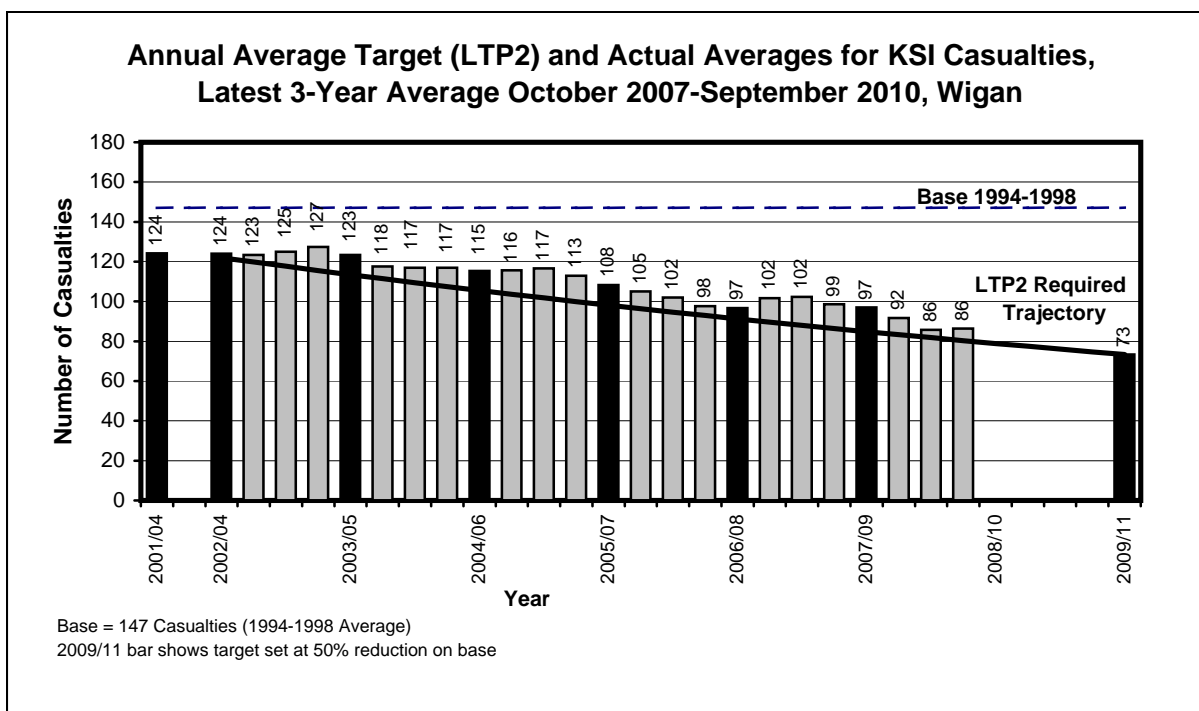
WIGAN KSI CASUALTY STATISTICS
October 2007 - September 2010

KSI Casualties: 50% casualty reduction on 1994-1998 baseline by 2010

Wigan KSI Casualties, Latest 3-Year Average, from October 07 to September 10

Annual Average Target (LTP2) and Actual Averages for KSI Casualties				
Year	Annual Average		Index	
	Trajectory	Actual	Trajectory	Actual
1994-1998 baseline		147		100
2001-2004: baseline		124		85
2003: average 2002/2003/2004	122	124	83	85
2004: average 2003/2004/2005	113	123	77	84
2005: average 2004/2005/2006	106	115	72	79
2006: average 2005/2006/2007	98	108	67	74
2007: average 2006/2007/2008	91	97	62	66
2008: average 2007/2008/2009	85	97	58	66
<i>Average Apr 07-Mar 10</i>	83	92	57	63
<i>Average Jul 07-Jun 10</i>	82	86	56	58
<i>Average Oct 07-Sep 10</i>	80	86	55	59
2009: average 2008/2009/2010	79		54	
Target 2010: average 2009/2010/2011	73		50	

Note: The casualties for the target year will not be known until February/March 2012 (when the full 2011 data is available)





LTP2 FACTSHEET

GREATER MANCHESTER TRANSPORTATION UNIT

WIGAN CHILD KSI CASUALTY STATISTICS

October 2007 - September 2010

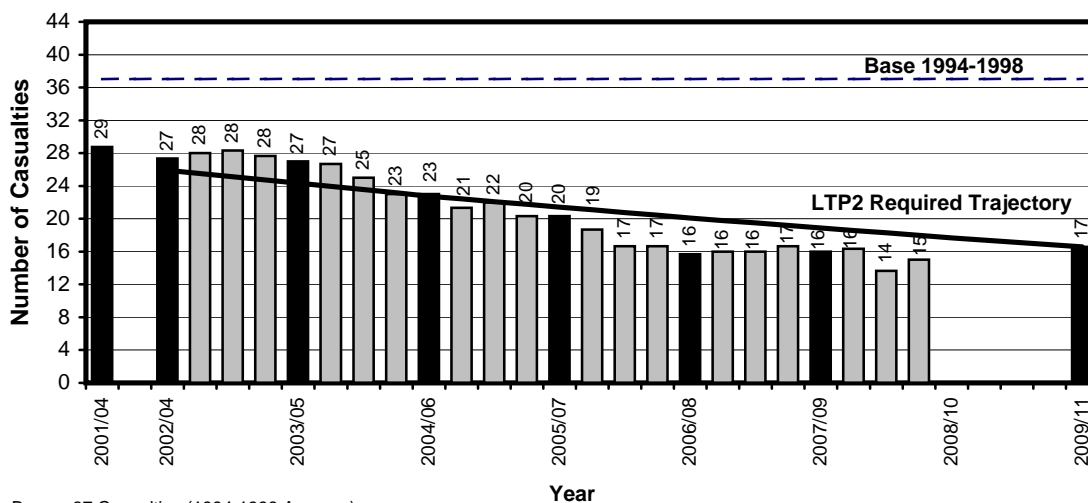
Child KSI Casualties: 55% casualty reduction on 1994-1998 baseline by 2010

Wigan Child KSI Casualties, Latest 3-Year Average, from October 07 to September 10

Year	Annual Average		Index	
	Trajectory	Actual	Trajectory	Actual
1994-1998 baseline		37		100
2001-2004: baseline		29		78
2003: average 2002/2003/2004	26	27	70	74
2004: average 2003/2004/2005	24	27	66	73
2005: average 2004/2005/2006	23	23	62	63
2006: average 2005/2006/2007	21	20	58	55
2007: average 2006/2007/2008	20	16	55	43
2008: average 2007/2008/2009	19	16	51	43
<i>Average Apr 07-Mar 10</i>	19	16	50	44
<i>Average Jul 07-Jun 10</i>	18	14	50	37
<i>Average Oct 07-Sep 10</i>	18	15	49	41
2009: average 2008/2009/2010	18		48	
Target 2010: average 2009/2010/2011	17		45	

Note: The casualties for the target year will not be known until February/March 2012 (when the full 2011 data is available)

Annual Average Target (LTP2) and Actual Averages for Child KSI Casualties, Latest 3-Year Average October 2007-September 2010, Wigan



Base = 37 Casualties (1994-1998 Average)
2009/11 bar shows target set at 55% reduction on base



LTP2 FACTSHEET

GREATER MANCHESTER TRANSPORTATION UNIT

WIGAN SLIGHTLY INJURED CASUALTY STATISTICS

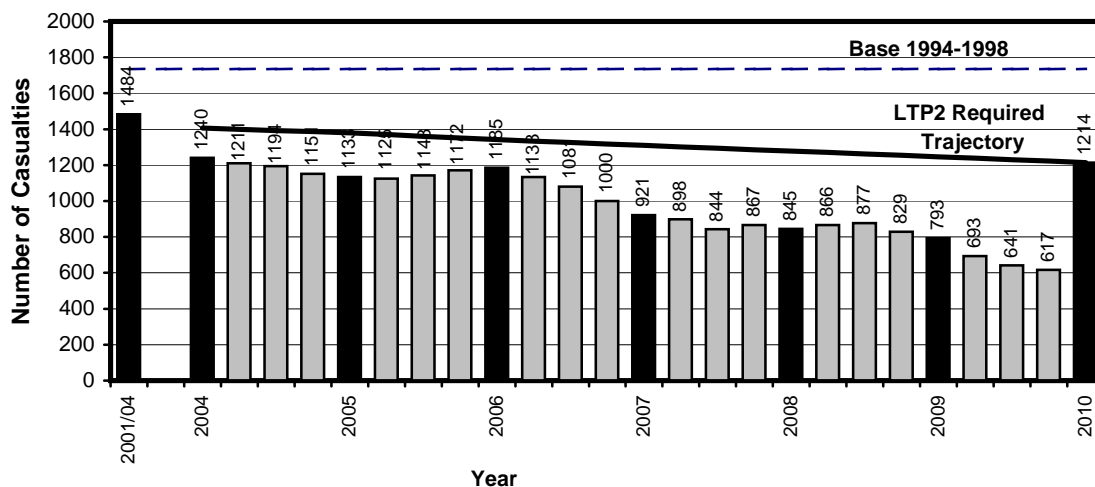
October 2009 - September 2010

Slight Casualties: 30% casualty reduction on 1994-1998 baseline by 2010

Wigan Slight Casualties, Latest 12 Months, from October 09 to September 10

Target (LTP2) and Actual Numbers for Slight Casualties				
Year	Number		Index	
	Trajectory	Actual	Trajectory	Actual
1994-1998 baseline		1735		100
2001-2004: baseline		1484		86
2004	1406	1240	81	71
2005	1380	1133	80	65
2006	1342	1185	77	68
2007	1310	921	76	53
2008	1278	845	74	49
2009	1246	793	72	46
Apr 09-Mar 10	1238	693	71	40
Jul 09-Jun 10	1230	641	71	37
Oct 09-Sep 10	1222	617	70	36
Target 2010	1214		70	

Target (LTP2) and Actual Numbers for Slight Casualties, Latest 12 Months October 2009-September 2010, Wigan



Base = 1735 Casualties (1994-1998 Average)

2010 bar shows target set at 30% reduction on base

Greater Manchester Transportation Unit



PEDESTRIAN AND PEDAL CYCLE FACTSHEET

WIGAN PEDESTRIAN AND PEDAL CYCLE CASUALTY STATISTICS

October 08 - September 09, October 09 - September 10, Base

Wigan Pedestrian Casualties by Road Class

October 08 - September 09, October 09 - September 10, Base

Road Class	Base ⁽¹⁾ Ave 1994-98	Oct 08 - Sep 09	Oct 09 - Sep 10	% Change (09 - 10/ 08 - 09)	% Change (09 - 10 /Base)
Motorway	1	0	0	-(3)	-(3)
A Class Roads ⁽²⁾	124	64	43	-32.8	-65.3
B Class Roads	47	24	11	-54.2	-76.6
Minor Roads	151	72	50	-30.6	-66.9
Non-Motorways	322	160	104	-35.0	-67.7
Total	323	160	104	-35.0	-67.8

Wigan Pedal Cycle Casualties by Road Class

October 08 - September 09, October 09 - September 10, Base

Road Class	Base ⁽¹⁾ Ave 1994-98	Oct 08 - Sep 09	Oct 09 - Sep 10	% Change (09 - 10/ 08 - 09)	% Change (09 - 10 /Base)
Motorway	0	0	0	-(3)	-(3)
A Class Roads ⁽²⁾	52	29	27	-6.9	-48.1
B Class Roads	14	5	7	40.0	-50.0
Minor Roads	67	32	23	-28.1	-65.7
Non-Motorways	133	66	57	-13.6	-57.1
Total	133	66	57	-13.6	-57.1

Notes :-

1. Base figures are rounded to the nearest whole number
2. A roads include the A580 which was de-trunked on 1 April 2004
3. Casualty numbers too small to make % changes meaningful