



# LTP2 FACTSHEET

## GREATER MANCHESTER TRANSPORTATION UNIT

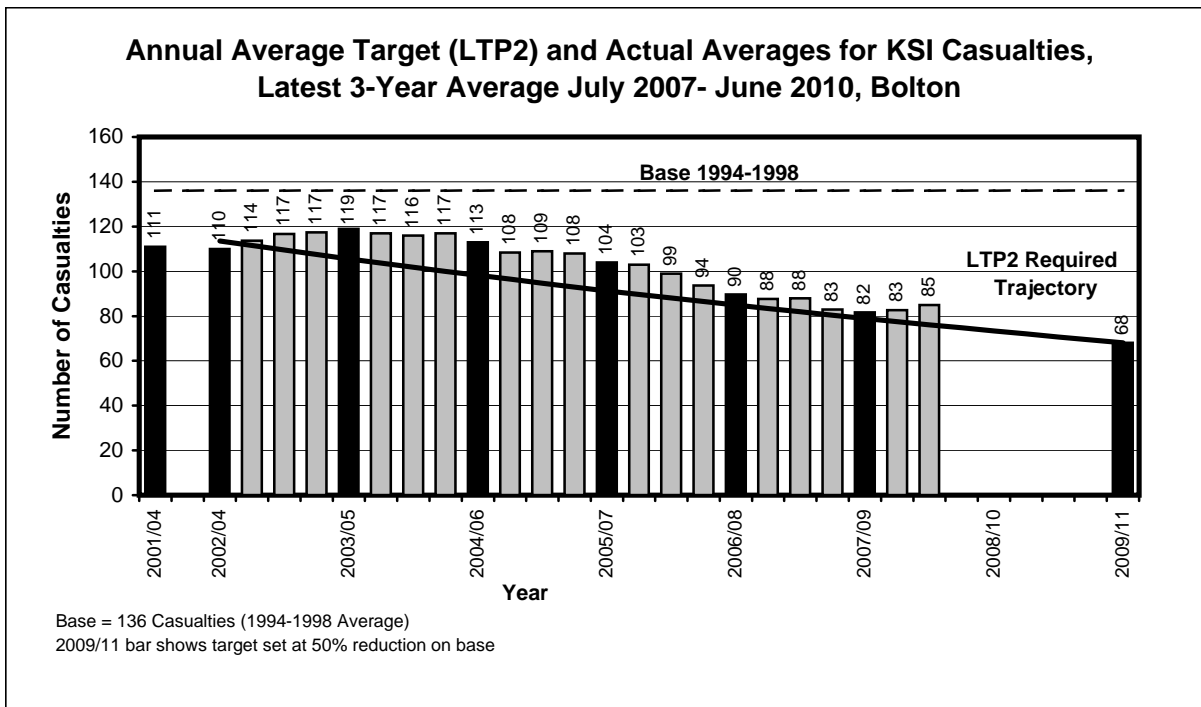
BOLTON KSI CASUALTY STATISTICS  
July 2007 - June 2010

### KSI Casualties: 50% casualty reduction on 1994-1998 baseline by 2010

Bolton KSI Casualties, Latest 3-Year Average, from July 07 to June 10

Annual Average Target (LTP2) and Actual Averages for KSI Casualties				
	Annual Average		Index	
	Trajectory	Actual	Trajectory	Actual
1994-1998 baseline		136		100
2001-2004: baseline		111		81
2003: average 2002/2003/2004	114	110	83	80
2004: average 2003/2004/2005	106	119	77	87
2005: average 2004/2005/2006	98	113	72	83
2006: average 2005/2006/2007	91	104	67	76
2007: average 2006/2007/2008	85	90	62	66
2008: average 2007/2008/2009	79	82	58	60
Average Apr 07-Mar 10	78	83	57	61
Average Jul 07-Jun 10	76	85	56	62
2009: average 2008/2009/2010	73		54	
Target 2010: average 2009/2010/2011	68		50	

Note: The casualties for the target year will not be known until February/March 2012 (when the full 2011 data is available)





## LTP2 FACTSHEET

### GREATER MANCHESTER TRANSPORTATION UNIT

BOLTON CHILD KSI CASUALTY STATISTICS

July 2007 - June 2010

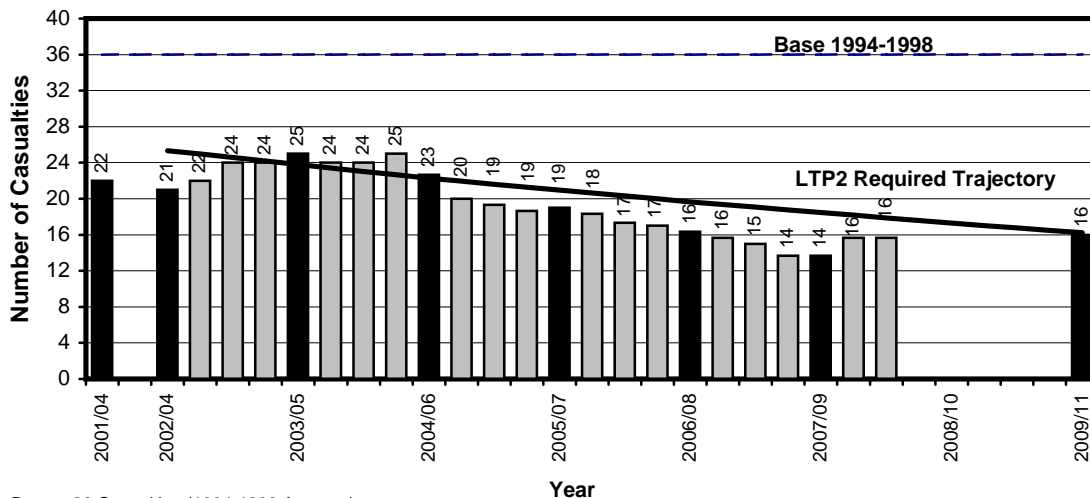
#### Child KSI Casualties: 55% casualty reduction on 1994-1998 baseline by 2010

Bolton Child KSI Casualties, Latest 3-Year Average, from July 07 to June 10

Year	Annual Average		Index	
	Trajectory	Actual	Trajectory	Actual
1994-1998 baseline		36		100
2001-2004: baseline		22		61
2003: average 2002/2003/2004	25	21	70	58
2004: average 2003/2004/2005	24	25	66	69
2005: average 2004/2005/2006	22	23	62	63
2006: average 2005/2006/2007	21	19	58	53
2007: average 2006/2007/2008	20	16	55	45
2008: average 2007/2008/2009	18	14	51	38
<i>Average Apr 07-Mar 10</i>	18	16	50	44
<i>Average Jul 07-Jun 10</i>	18	16	50	44
2009: average 2008/2009/2010	17		48	
Target 2010: average 2009/2010/2011	16		45	

Note: The casualties for the target year will not be known until February/March 2012 (when the full 2011 data is available)

**Annual Average Target (LTP2) and Actual Averages for Child KSI Casualties, Latest 3-Year Average July 2007-June 2010, Bolton**



Base = 36 Casualties (1994-1998 Average)  
2009/11 bar shows target set at 55% reduction on base



## LTP2 FACTSHEET

### GREATER MANCHESTER TRANSPORTATION UNIT

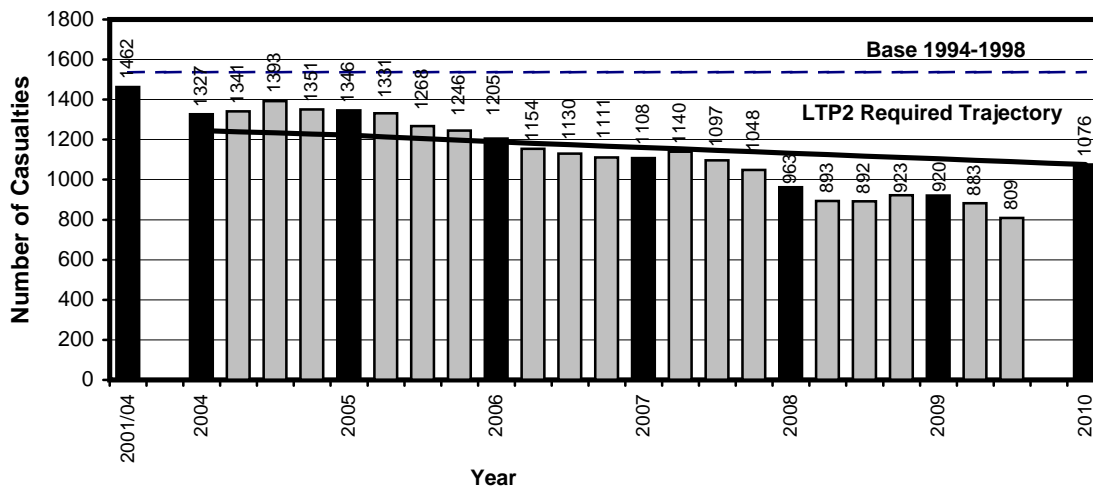
BOLTON SLIGHTLY INJURED CASUALTY STATISTICS  
July 2009 - June 2010

#### Slight Casualties: 30% casualty reduction on 1994-1998 baseline by 2010

Bolton Slight Casualties, Latest 12 Months, from July 09 to June 10

Target (LTP2) and Actual Numbers for Slight Casualties				
Year	Number		Index	
	Trajectory	Actual	Trajectory	Actual
1994-1998 baseline		1537		100
2001-2004: baseline		1462		95
2004	1245	1327	81	86
2005	1222	1346	80	88
2006	1189	1205	77	78
2007	1161	1108	76	72
2008	1132	963	74	63
2009	1104	920	72	60
Apr 09-Mar 10	1097	883	71	57
Jul 09-Jun 10	1090	809	71	53
Target 2010	1076		70	

Target (LTP2) and Actual Numbers for Slight Casualties,  
Latest 12 Months July 2009-June 2010, Bolton



Base = 1537 Casualties (1994-1998 Average)  
2010 bar shows target set at 30% reduction on base

# Greater Manchester Transportation Unit



## PEDESTRIAN AND PEDAL CYCLE FACTSHEET

### BOLTON PEDESTRIAN AND PEDAL CYCLE CASUALTY STATISTICS

July 08 - June 09, July 09 - June 10, Base

#### Bolton Pedestrian Casualties by Road Class

July 08 - June 09, July 09 - June 10, Base

Road Class	Base <sup>(1)</sup> Ave 1994-98	Jul 08 - Jun 09	Jul 09 - Jun 10	% Change ( 09 - 10/ 08 - 09 )	% Change ( 09 - 10 /Base )
Motorway	0	1	0	-(2)	-(2)
A Class Road	137	71	60	-15.5	-56.2
B Class Roads	43	19	28	47.4	-34.9
Minor Roads	142	80	58	-27.5	-59.2
Non-Motorways	322	170	146	-14.1	-54.7
<b>Total</b>	<b>322</b>	<b>171</b>	<b>146</b>	<b>-14.6</b>	<b>-54.7</b>

#### Bolton Pedal Cycle Casualties by Road Class

July 08 - June 09, July 09 - June 10, Base

Road Class	Base <sup>(1)</sup> Ave 1994-98	Jul 08 - Jun 09	Jul 09 - Jun 10	% Change ( 09 - 10/ 08 - 09 )	% Change ( 09 - 10 /Base )
Motorway	0	0	0	-(2)	-(2)
A Class Roads	40	25	29	16.0	-27.5
B Class Roads	12	6	7	16.7	-41.7
Minor Roads	54	30	17	-43.3	-68.5
Non-Motorways	107	61	53	-13.1	-50.5
<b>Total</b>	<b>107</b>	<b>61</b>	<b>53</b>	<b>-13.1</b>	<b>-50.5</b>

Notes :-

1. Base figures are rounded to the nearest whole number
2. Casualty numbers too small to make % changes meaningful



## LTP2 FACTSHEET

### GREATER MANCHESTER TRANSPORTATION UNIT

BURY KSI CASUALTY STATISTICS

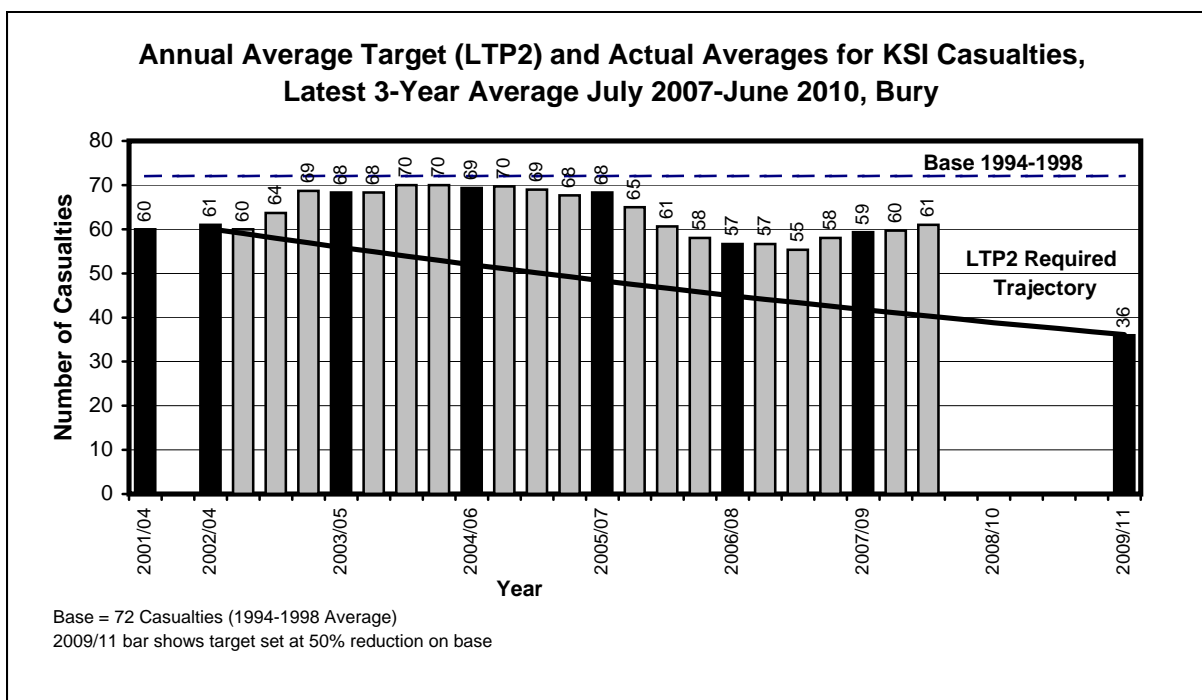
July 2007 - June 2010

#### KSI Casualties: 50% casualty reduction on 1994-1998 baseline by 2010

Bury KSI Casualties, Latest 3-Year Average, from July 07 to June 10

Year	Annual Average		Index	
	Trajectory	Actual	Trajectory	Actual
1994-1998 baseline		72		100
2001-2004: baseline		60		82
2003: average 2002/2003/2004	60	61	83	84
2004: average 2003/2004/2005	56	68	77	95
2005: average 2004/2005/2006	52	69	72	96
2006: average 2005/2006/2007	48	68	67	95
2007: average 2006/2007/2008	45	57	62	78
2008: average 2007/2008/2009	42	59	58	82
<i>Average Apr 07-Mar 10</i>	41	60	57	83
<i>Average Jul 07-Jun 10</i>	40	61	56	84
2009: average 2008/2009/2010	39		54	
Target 2010: average 2009/2010/2011	36		50	

Note: The casualties for the target year will not be known until February/March 2012 (when the full 2011 data is available)





## LTP2 FACTSHEET

### GREATER MANCHESTER TRANSPORTATION UNIT

BURY CHILD KSI CASUALTY STATISTICS

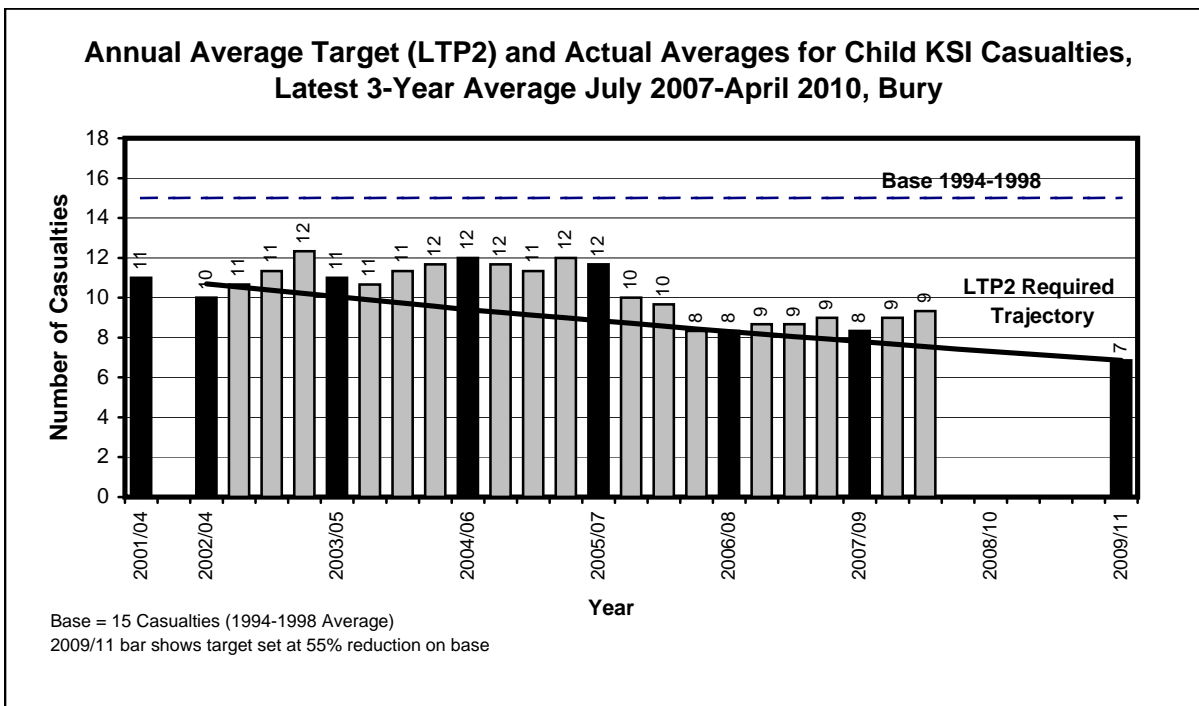
July 2007 - June 2010

#### Child KSI Casualties: 55% casualty reduction on 1994-1998 baseline by 2010

Bury Child KSI Casualties, Latest 3-Year Average, from July 07 to June 10

Annual Average Target (LTP2) and Actual Averages for Child KSI Casualties				
Year	Annual Average		Index	
	Trajectory	Actual	Trajectory	Actual
1994-1998 baseline		15		100
2001-2004: baseline		11		74
2003: average 2002/2003/2004	11	10	70	66
2004: average 2003/2004/2005	10	11	66	70
2005: average 2004/2005/2006	9	12	62	79
2006: average 2005/2006/2007	9	12	58	77
2007: average 2006/2007/2008	8	8	55	55
2008: average 2007/2008/2009	8	8	51	55
<i>Average Apr 07-Mar 10</i>	8	9	50	59
<i>Average Jul 07-Jun 10</i>	8	9	50	61
2009: average 2008/2009/2010	7		48	
Target 2010: average 2009/2010/2011	7		45	

Note: The casualties for the target year will not be known until February/March 2012 (when the full 2011 data is available)





## LTP2 FACTSHEET

### GREATER MANCHESTER TRANSPORTATION UNIT

#### BURY SLIGHTLY INJURED CASUALTY STATISTICS

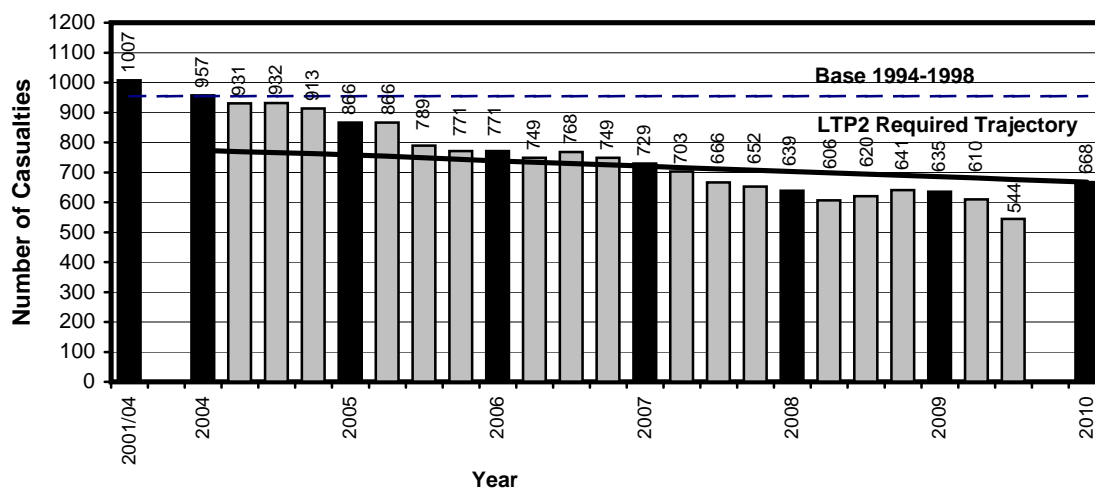
July 2009 - June 2010

#### Slight Casualties: 30% casualty reduction on 1994-1998 baseline by 2010

Bury Slight Casualties, Latest 12 Months, from July 09 to June 10

Target (LTP2) and Actual Numbers for Slight Casualties				
Year	Number		Index	
	Trajectory	Actual	Trajectory	Actual
1994-1998 baseline		954		100
2001-2004: baseline		1007		106
2004	773	957	81	100
2005	759	866	80	91
2006	738	771	77	81
2007	720	729	76	76
2008	703	639	74	67
2009	685	635	72	67
Apr 09-Mar 10	681	610	71	64
Jul 09-Jun 10	676	544	71	57
Target 2010	668		70	

Target (LTP2) and Actual Numbers for Slight Casualties,  
Latest 12 Months July 2009-June 2010, Bury



Base = 954 Casualties (1994-1998 Average)

2010 bar shows target set at 30% reduction on base

# Greater Manchester Transportation Unit



## PEDESTRIAN AND PEDAL CYCLE FACTSHEET

### BURY PEDESTRIAN AND PEDAL CYCLE CASUALTY STATISTICS

July 08 - June 09, July 09 - June 10, Base

#### Bury Pedestrian Casualties by Road Class

July 08 - June 09, July 09 - June 10, Base

Road Class	Base <sup>(1)</sup> Ave 1994-98	Jul 08 - Jun 09	Jul 09 - Jun 10	% Change ( 09 - 10/ 08 - 09 )	% Change ( 09 - 10 /Base )
Motorway	1	0	0	-(2)	-(2)
A Class Road	64	27	35	29.6	-45.3
B Class Roads	25	11	18	63.6	-28.0
Minor Roads	78	41	46	12.2	-41.0
Non-Motorways	168	79	99	25.3	-41.1
<b>Total</b>	<b>169</b>	<b>79</b>	<b>99</b>	<b>25.3</b>	<b>-41.4</b>

#### Bury Pedal Cycle Casualties by Road Class

July 08 - June 09, July 09 - June 10, Base

Road Class	Base <sup>(1)</sup> Ave 1994-98	Jul 08 - Jun 09	Jul 09 - Jun 10	% Change ( 09 - 10/ 08 - 09 )	% Change ( 09 - 10 /Base )
Motorway	0	0	0	-(2)	-(2)
A Class Roads	24	25	14	-44.0	-41.7
B Class Roads	12	7	1	-85.7	-91.7
Minor Roads	31	18	16	-11.1	-48.4
Non-Motorways	67	50	31	-38.0	-53.7
<b>Total</b>	<b>67</b>	<b>50</b>	<b>31</b>	<b>-38.0</b>	<b>-53.7</b>

**Notes :-**

1. Base figures are rounded to the nearest whole number
2. Casualty numbers too small to make % changes meaningful





# LTP2 FACTSHEET

## GREATER MANCHESTER TRANSPORTATION UNIT

MANCHESTER KSI CASUALTY STATISTICS

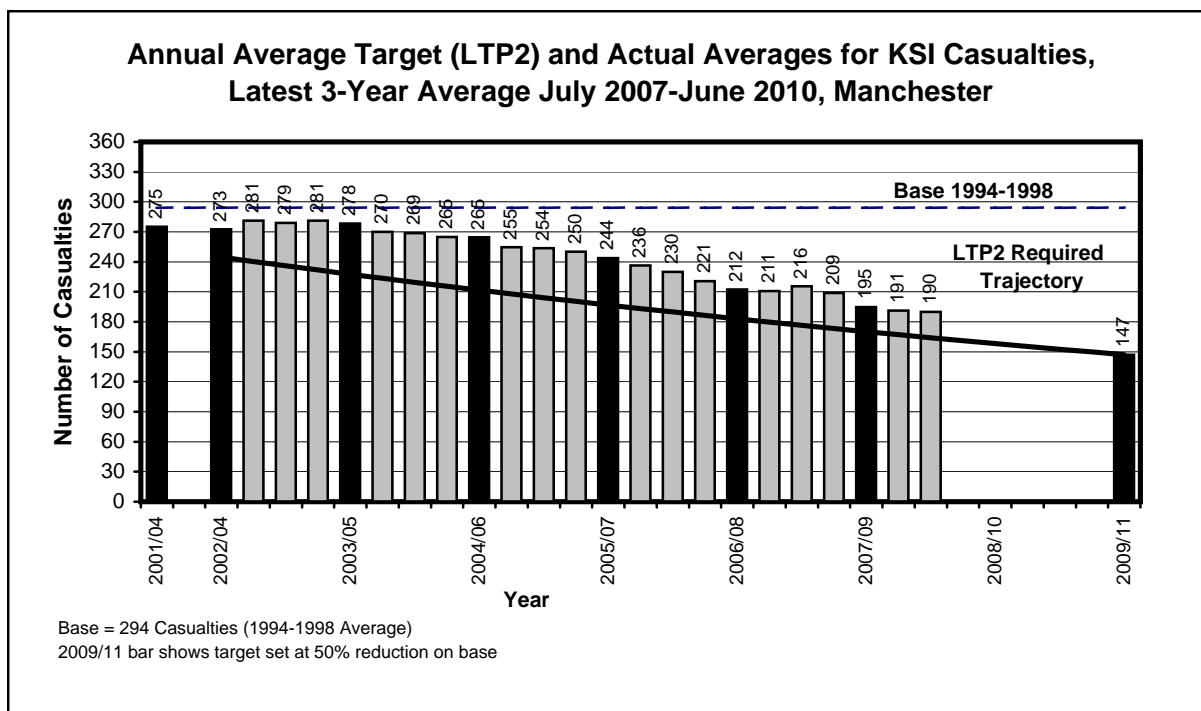
July 2007 - June 2010

### KSI Casualties: 50% casualty reduction on 1994-1998 baseline by 2010

Manchester KSI Casualties, Latest 3-Year Average, from July 07 to June 10

Annual Average Target (LTP2) and Actual Averages for KSI Casualties				
Year	Annual Average		Index	
	Trajectory	Actual	Trajectory	Actual
1994-1998 baseline		294		100
2001-2004: baseline		275		94
2003: average 2002/2003/2004	245	273	83	93
2004: average 2003/2004/2005	227	278	77	95
2005: average 2004/2005/2006	212	265	72	90
2006: average 2005/2006/2007	197	244	67	83
2007: average 2006/2007/2008	183	212	62	72
2008: average 2007/2008/2009	170	195	58	66
<i>Average Apr 07-Mar 10</i>	167	191	57	65
<i>Average Jul 07-Jun 10</i>	164	190	56	65
2009: average 2008/2009/2010	158		54	
Target 2010: average 2009/2010/2011	147		50	

Note: The casualties for the target year will not be known until February/March 2012 (when the full 2011 data is available)





# LTP2 FACTSHEET

## GREATER MANCHESTER TRANSPORTATION UNIT

MANCHESTER CHILD KSI CASUALTY STATISTICS

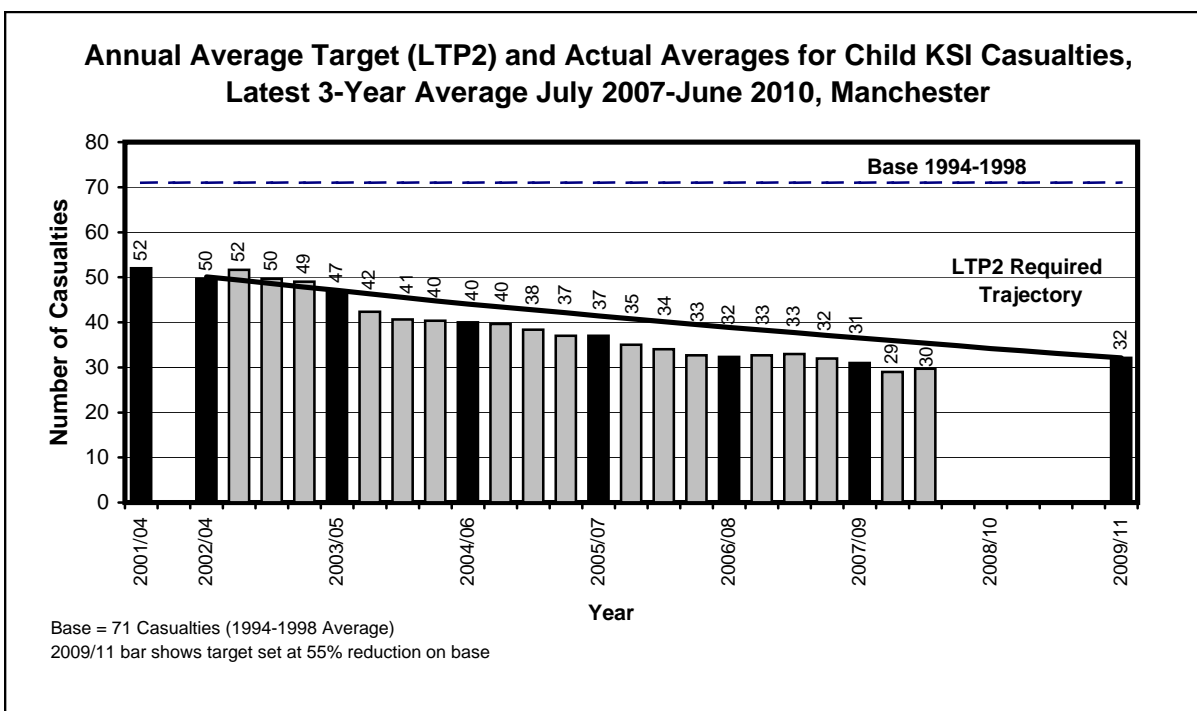
July 2007 - June 2010

### Child KSI Casualties: 55% casualty reduction on 1994-1998 baseline by 2010

Manchester Child KSI Casualties, Latest 3-Year Average, from July 07 to June 10

Year	Annual Average		Index	
	Trajectory	Actual	Trajectory	Actual
1994-1998 baseline		71		100
2001-2004: baseline		52		73
2003: average 2002/2003/2004	50	50	70	70
2004: average 2003/2004/2005	47	47	66	66
2005: average 2004/2005/2006	44	40	62	56
2006: average 2005/2006/2007	41	37	58	52
2007: average 2006/2007/2008	39	32	55	45
2008: average 2007/2008/2009	37	31	51	44
<i>Average Apr 07-Mar 10</i>	36	29	50	41
<i>Average Jul 07-Jun 10</i>	35	30	50	42
2009: average 2008/2009/2010	34		48	
Target 2010: average 2009/2010/2011	32		45	

Note: The casualties for the target year will not be known until February/March 2012 (when the full 2011 data is available)





# LTP2 FACTSHEET

## GREATER MANCHESTER TRANSPORTATION UNIT

### MANCHESTER SLIGHTLY INJURED CASUALTY STATISTICS

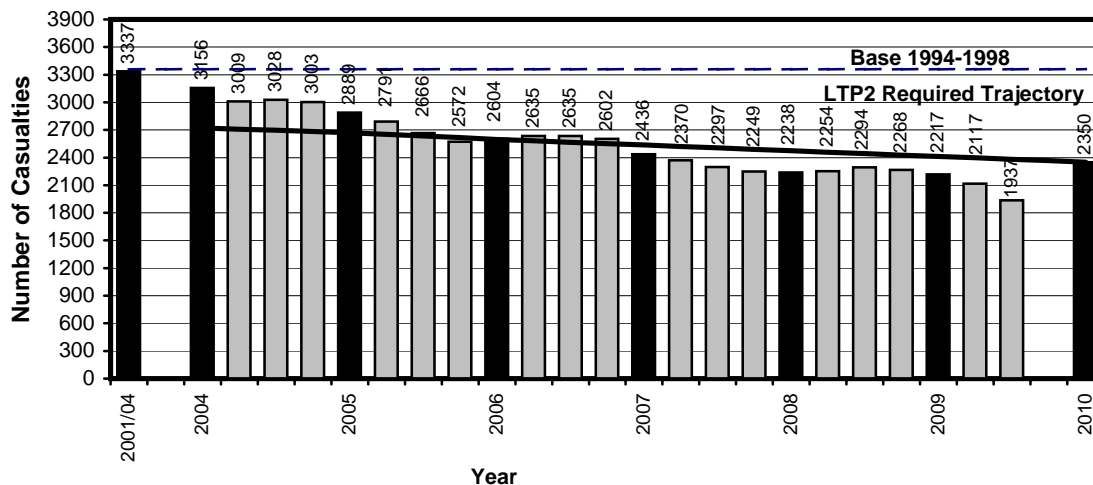
July 2009 - June 2010

### Slight Casualties: 30% casualty reduction on 1994-1998 baseline by 2010

Manchester Slight Casualties, Latest 12 Months, from July 09 to June 10

Target (LTP2) and Actual Numbers for Slight Casualties				
Year	Number		Index	
	Trajectory	Actual	Trajectory	Actual
1994-1998 baseline		3358		100
2001-2004: baseline		3337		99
2004	2721	3156	81	94
2005	2671	2889	80	86
2006	2597	2604	77	78
2007	2536	2436	76	73
2008	2474	2238	74	67
2009	2412	2217	72	66
Apr 09-Mar 10	2397	2117	71	63
Jul 09-Jun 10	2381	1937	71	58
Target 2010	2350		70	

Target (LTP2) and Actual Numbers for Slight Casualties, Latest 12 Months July 2009-June 2010, Manchester



Base = 3358 Casualties (1994-1998 Average)  
 2010 bar shows target set at 30% reduction on base

# Greater Manchester Transportation Unit



## PEDESTRIAN AND PEDAL CYCLE FACTSHEET

MANCHESTER PEDESTRIAN AND PEDAL CYCLE CASUALTY STATISTICS

July 08 - June 09, July 09 - June 10, Base

### Manchester Pedestrian Casualties by Road Class

July 08 - June 09, July 09 - June 10, Base

Road Class	Base <sup>(1)</sup> Ave 1994-98	Jul 08 - Jun 09	Jul 09 - Jun 10	% Change ( 09 - 10/ 08 - 09 )	% Change ( 09 - 10 /Base )
Motorway	1	1	0	-(3)	-(3)
A Class Road <sup>(2)</sup>	311	181	132	-27.1	-57.6
B Class Roads	86	38	49	28.9	-43.0
Minor Roads	351	208	180	-13.5	-48.7
Non-Motorways	748	427	361	-15.5	-51.7
<b>Total</b>	<b>749</b>	<b>428</b>	<b>361</b>	<b>-15.7</b>	<b>-51.8</b>

### Manchester Pedal Cycle Casualties by Road Class

July 08 - June 09, July 09 - June 10, Base

Road Class	Base <sup>(1)</sup> Ave 1994-98	Jul 08 - Jun 09	Jul 09 - Jun 10	% Change ( 09 - 10/ 08 - 09 )	% Change ( 09 - 10 /Base )
Motorway	0	0	0	-(3)	-(3)
A Class Roads <sup>(2)</sup>	105	110	120	9.1	14.3
B Class Roads	44	49	32	-34.7	-27.3
Minor Roads	138	78	99	26.9	-28.3
Non-Motorways	288	237	251	5.9	-12.8
<b>Total</b>	<b>288</b>	<b>237</b>	<b>251</b>	<b>5.9</b>	<b>-12.8</b>

**Notes :-**

1. Base figures are rounded to the nearest whole number
2. A Roads include A(M) and A(T) roads
3. Casualty numbers too small to make % changes meaningful



## LTP2 FACTSHEET

### GREATER MANCHESTER TRANSPORTATION UNIT

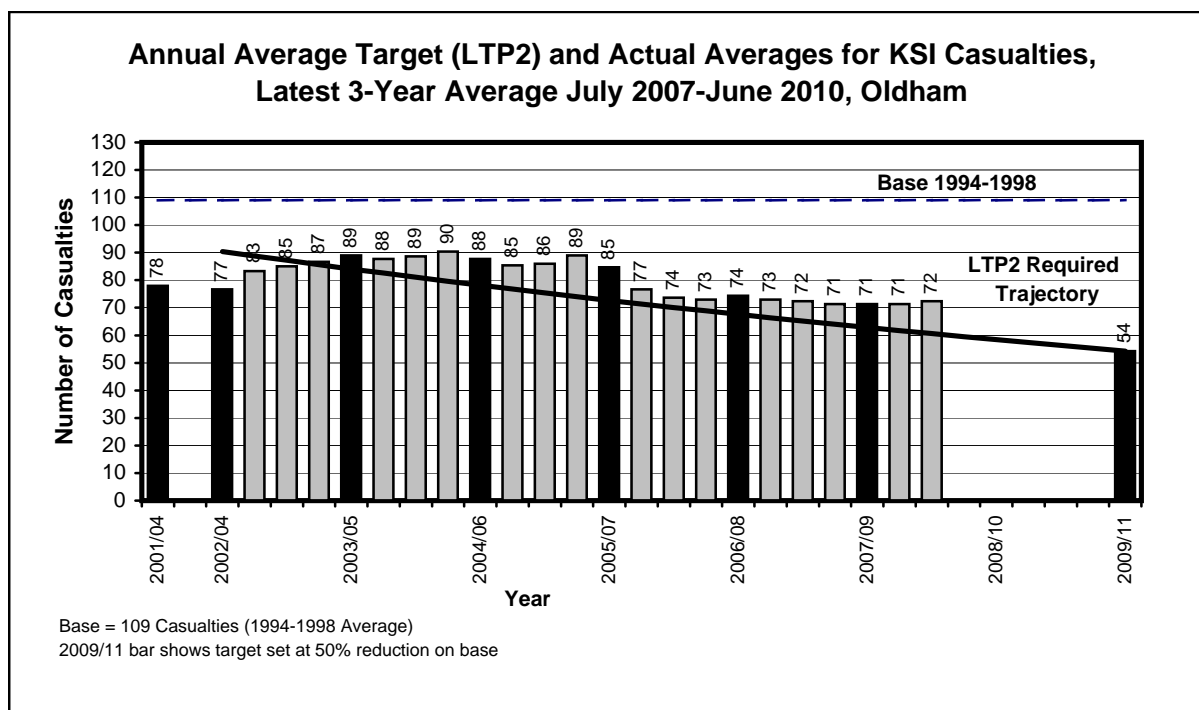
OLDHAM KSI CASUALTY STATISTICS  
July 2007 - June 2010

#### KSI Casualties: 50% casualty reduction on 1994-1998 baseline by 2010

Oldham KSI Casualties, Latest 3-Year Average, from July 07 to June 10

Annual Average Target (LTP2) and Actual Averages for KSI Casualties				
Year	Annual Average		Index	
	Trajectory	Actual	Trajectory	Actual
1994-1998 baseline		109		100
2001-2004: baseline		78		72
2003: average 2002/2003/2004	90	77	83	71
2004: average 2003/2004/2005	84	89	77	82
2005: average 2004/2005/2006	78	88	72	81
2006: average 2005/2006/2007	73	85	67	78
2007: average 2006/2007/2008	68	74	62	68
2008: average 2007/2008/2009	63	71	58	66
Average Apr 07-Mar 10	62	71	57	66
Average Jul 07-Jun 10	61	72	56	67
2009: average 2008/2009/2010	61		54	
Target 2010: average 2009/2010/2011	54		50	

Note: The casualties for the target year will not be known until February/March 2012 (when the full 2011 data is available)





## LTP2 FACTSHEET

### GREATER MANCHESTER TRANSPORTATION UNIT

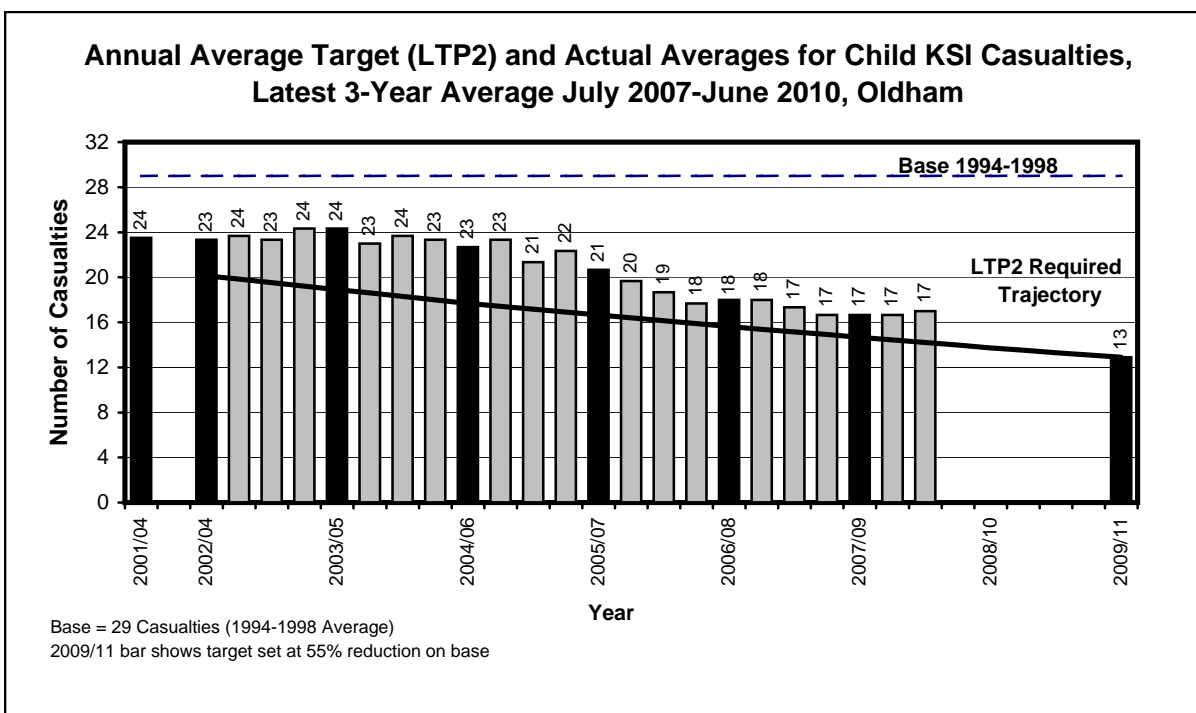
OLDHAM CHILD KSI CASUALTY STATISTICS  
July 2007 - June 2010

#### Child KSI Casualties: 55% casualty reduction on 1994-1998 baseline by 2010

Oldham Child KSI Casualties, Latest 3-Year Average, from July 07 to June 10

Annual Average Target (LTP2) and Actual Averages for Child KSI Casualties				
Year	Annual Average		Index	
	Trajectory	Actual	Trajectory	Actual
1994-1998 baseline		29		100
2001-2004: baseline		24		82
2003: average 2002/2003/2004	20	23	70	82
2004: average 2003/2004/2005	19	24	66	85
2005: average 2004/2005/2006	18	23	62	79
2006: average 2005/2006/2007	17	21	58	72
2007: average 2006/2007/2008	16	18	55	63
2008: average 2007/2008/2009	15	17	51	58
<i>Average Apr 07-Mar 10</i>	14	17	50	58
<i>Average Jul 07-Jun 10</i>	14	17	50	59
2009: average 2008/2009/2010	14		48	
Target 2010: average 2009/2010/2011	13		45	

Note: The casualties for the target year will not be known until February/March 2012 (when the full 2011 data is available)





## LTP2 FACTSHEET

### GREATER MANCHESTER TRANSPORTATION UNIT

#### OLDHAM SLIGHTLY INJURED CASUALTY STATISTICS

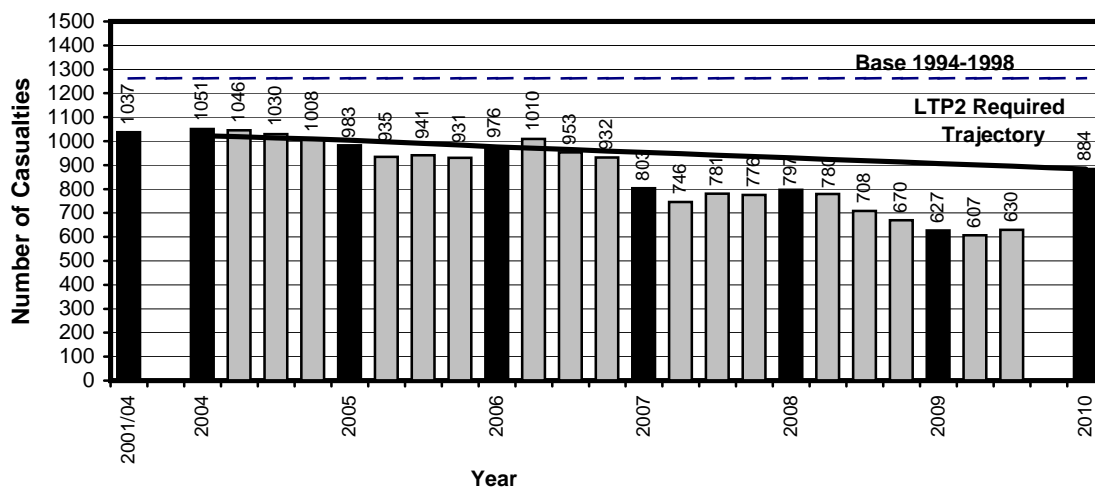
July 2009 - June 2010

### Slight Casualties: 30% casualty reduction on 1994-1998 baseline by 2010

Oldham Slight Casualties, Latest 12 Months, from July 09 to June 10

Year	Number		Index	
	Trajectory	Actual	Trajectory	Actual
1994-1998 baseline		1262		100
2001-2004: baseline		1037		82
2004	1023	1051	81	83
2005	1004	983	80	78
2006	976	976	77	77
2007	953	803	76	64
2008	930	797	74	63
2009	907	627	72	50
Apr 09-Mar 10	901	607	71	48
Jul 09-Jun 10	895	630	71	50
Target 2010	884		70	

**Target (LTP2) and Actual Numbers for Slight Casualties,  
Latest 12 Months July 2009-June 2010, Oldham**



Base = 1262 Casualties (1994-1998 Average)

2010 bar shows target set at 30% reduction on base

# Greater Manchester Transportation Unit



## PEDESTRIAN AND PEDAL CYCLE FACTSHEET

### OLDHAM PEDESTRIAN AND PEDAL CYCLE CASUALTY STATISTICS

July 08 - June 09, July 09 - June 10, Base

#### Oldham Pedestrian Casualties by Road Class

July 08 - June 09, July 09 - June 10, Base

Road Class	Base <sup>(1)</sup> Ave 1994-98	Jul 08 - Jun 09	Jul 09 - Jun 10	% Change (09 - 10/ 08 - 09)	% Change (09 - 10 /Base)
Motorway <sup>(2)</sup>	0	1	0	-(3)	-(3)
A Class Road	98	35	53	51.4	-45.9
B Class Roads	30	17	9	-47.1	-70.0
Minor Roads	144	74	72	-2.7	-50.0
Non-Motorways	272	126	134	6.3	-50.7
<b>Total</b>	<b>272</b>	<b>127</b>	<b>134</b>	<b>5.5</b>	<b>-50.7</b>

#### Oldham Pedal Cycle Casualties by Road Class

July 08 - June 09, July 09 - June 10, Base

Road Class	Base <sup>(1)</sup> Ave 1994-98	Jul 08 - Jun 09	Jul 09 - Jun 10	% Change (09 - 10/ 08 - 09)	% Change (09 - 10 /Base)
Motorway <sup>(2)</sup>	0	0	0	-(3)	-(3)
A Class Roads	29	21	20	-4.8	-31.0
B Class Roads	9	4	2	-50.0	-77.8
Minor Roads	42	17	21	23.5	-50.0
Non-Motorways	79	42	43	2.4	-45.6
<b>Total</b>	<b>80</b>	<b>42</b>	<b>43</b>	<b>2.4</b>	<b>-46.3</b>

#### Notes :-

1. Base figures are rounded to the nearest whole number
2. Motorways include the A627(M)
3. Casualty numbers too small to make % changes meaningful





## LTP2 FACTSHEET

### GREATER MANCHESTER TRANSPORTATION UNIT

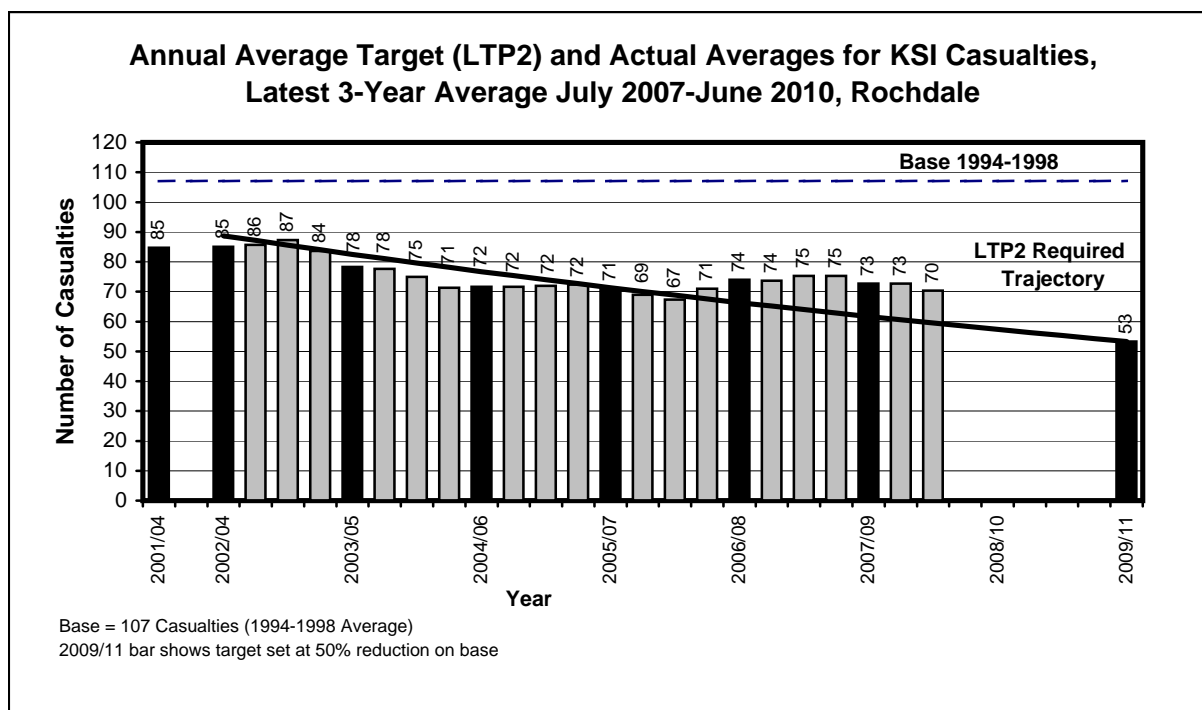
ROCHDALE KSI CASUALTY STATISTICS  
July 2007 - June 2010

#### KSI Casualties: 50% casualty reduction on 1994-1998 baseline by 2010

Rochdale KSI Casualties, Latest 3-Year Average, from July 07 to June 10

Year	Annual Average		Index	
	Trajectory	Actual	Trajectory	Actual
1994-1998 baseline		107		100
2001-2004: baseline		85		80
2003: average 2002/2003/2004	89	85	83	80
2004: average 2003/2004/2005	82	78	77	73
2005: average 2004/2005/2006	77	72	72	67
2006: average 2005/2006/2007	71	71	67	67
2007: average 2006/2007/2008	66	74	62	69
2008: average 2007/2008/2009	62	73	58	68
<i>Average Apr 07-Mar 10</i>	61	73	57	68
<i>Average Jul 07-Jun 10</i>	59	70	56	66
2009: average 2008/2009/2010	57		54	
Target 2010: average 2009/2010/2011	53		50	

Note: The casualties for the target year will not be known until February/March 2012 (when the full 2011 data is available)





## LTP2 FACTSHEET

### GREATER MANCHESTER TRANSPORTATION UNIT

ROCHDALE CHILD KSI CASUALTY STATISTICS

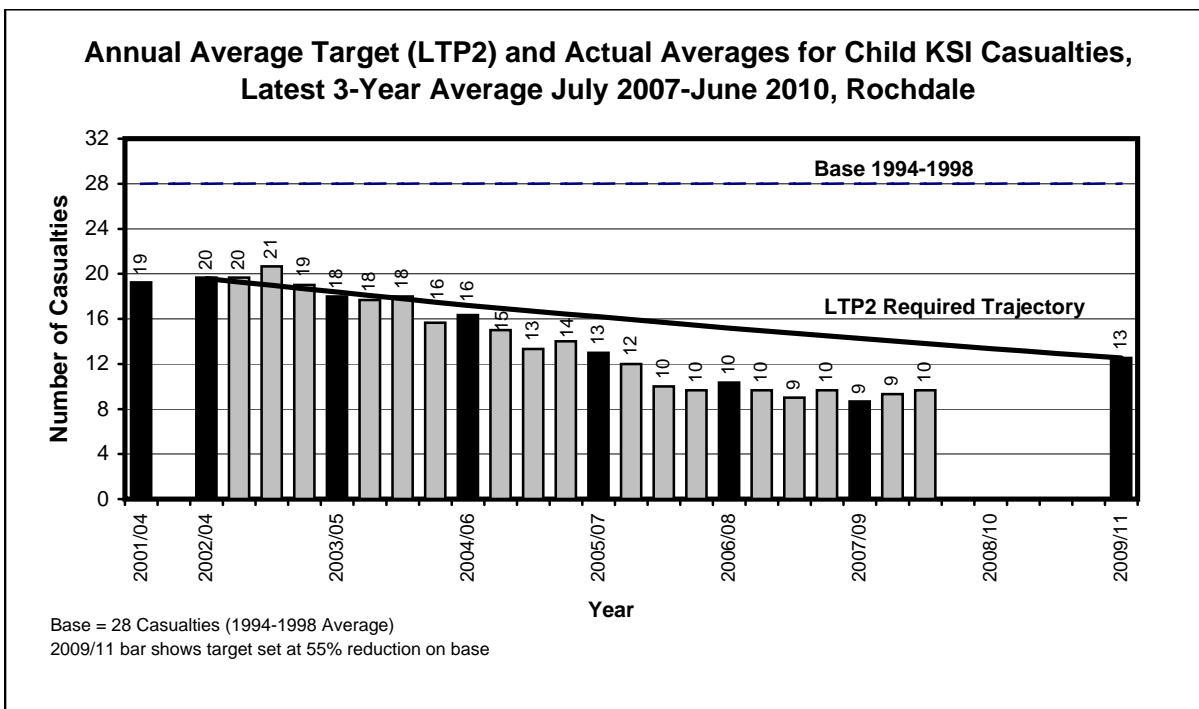
July 2007 - June 2010

#### Child KSI Casualties: 55% casualty reduction on 1994-1998 baseline by 2010

Rochdale Child KSI Casualties, Latest 3-Year Average, from January July 07 to June 10

Annual Average Target (LTP2) and Actual Averages for Child KSI Casualties				
Year	Annual Average		Index	
	Trajectory	Actual	Trajectory	Actual
1994-1998 baseline		28		100
2001-2004: baseline		19		69
2003: average 2002/2003/2004	20	20	70	71
2004: average 2003/2004/2005	18	18	66	65
2005: average 2004/2005/2006	17	16	62	59
2006: average 2005/2006/2007	16	13	58	47
2007: average 2006/2007/2008	15	10	55	37
2008: average 2007/2008/2009	14	9	51	31
Average Apr 07-Mar 10	14	9	50	34
Average Jul 07-Jun 10	14	10	50	35
2009: average 2008/2009/2010	13		48	
Target 2010: average 2009/2010/2011	13		45	

Note: The casualties for the target year will not be known until February/March 2012 (when the full 2011 data is available)





## LTP2 FACTSHEET

### GREATER MANCHESTER TRANSPORTATION UNIT

#### ROCHDALE SLIGHTLY INJURED CASUALTY STATISTICS

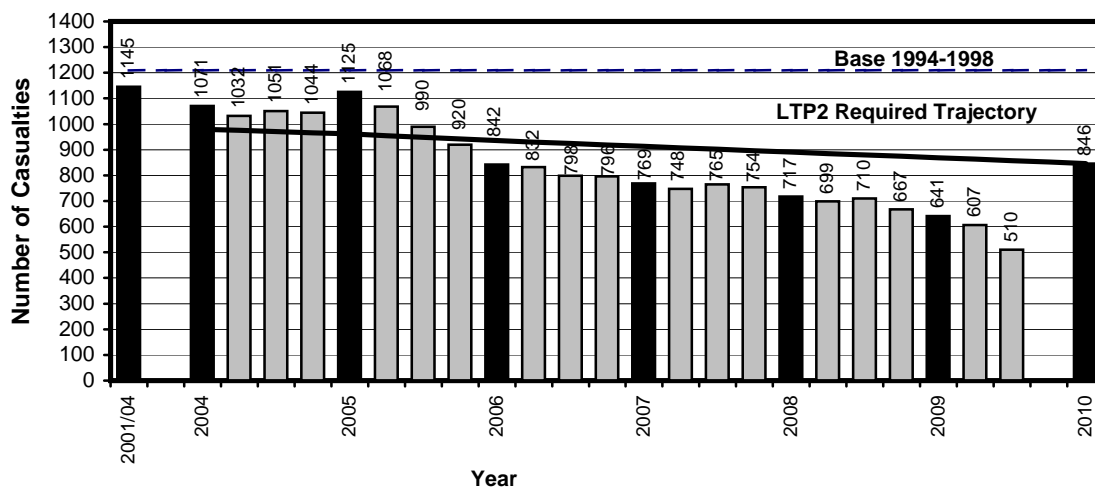
July 2009 - June 2010

### Slight Casualties: 30% casualty reduction on 1994-1998 baseline by 2010

Rochdale Slight Casualties, Latest 12 Months, from July 09 to June 10

Year	Number		Index	
	Trajectory	Actual	Trajectory	Actual
1994-1998 baseline		1209		100
2001-2004: baseline		1145		95
2004	980	1071	81	89
2005	962	1125	80	93
2006	935	842	77	70
2007	913	769	76	64
2008	891	717	74	59
2009	869	641	72	53
Apr 09-Mar 10	863	607	71	50
Jul 09-Jun 10	857	510	71	42
Target 2010	846		70	

Target (LTP2) and Actual Numbers for Slight Casualties,  
Latest 12 Months July 2009-June 2010, Rochdale



Base = 1209 Casualties (1994-1998 Average)

2010 bar shows target set at 30% reduction on base

# Greater Manchester Transportation Unit



## PEDESTRIAN AND PEDAL CYCLE FACTSHEET

### ROCHDALE PEDESTRIAN AND PEDAL CYCLE CASUALTY STATISTICS

July 08 - June 09, July 09 - June 10, Base

#### Rochdale Pedestrian Casualties by Road Class

July 08 - June 09, July 09 - June 10, Base

Road Class	Base <sup>(1)</sup> Ave 1994-98	Jul 08 - Jun 09	Jul 09 - Jun 10	% Change ( 09 - 10/ 08 - 09 )	% Change ( 09 - 10 /Base )
Motorway <sup>(2)</sup>	0	0	0	-(3)	-(3)
A Class Road	96	53	41	-22.6	-57.3
B Class Roads	27	19	14	-26.3	-48.1
Minor Roads	119	76	58	-23.7	-51.3
Non-Motorways	243	148	113	-23.6	-53.5
<b>Total</b>	<b>243</b>	<b>148</b>	<b>113</b>	<b>-23.6</b>	<b>-53.5</b>

#### Rochdale Pedal Cycle Casualties by Road Class

July 08 - June 09, July 09 - June 10, Base

Road Class	Base <sup>(1)</sup> Ave 1994-98	Jul 08 - Jun 09	Jul 09 - Jun 10	% Change ( 09 - 10/ 08 - 09 )	% Change ( 09 - 10 /Base )
Motorway <sup>(2)</sup>	0	0	0	-(3)	-(3)
A Class Roads	34	25	7	-72.0	-79.4
B Class Roads	8	4	2	-50.0	-75.0
Minor Roads	36	14	10	-28.6	-72.2
Non-Motorways	78	43	19	-55.8	-75.6
<b>Total</b>	<b>78</b>	<b>43</b>	<b>19</b>	<b>-55.8</b>	<b>-75.6</b>

#### Notes :-

1. Base figures are rounded to the nearest whole number
2. Motorways include the A627(M)
3. Casualty numbers too small to make % changes meaningful



## LTP2 FACTSHEET

### GREATER MANCHESTER TRANSPORTATION UNIT

SALFORD KSI CASUALTY STATISTICS

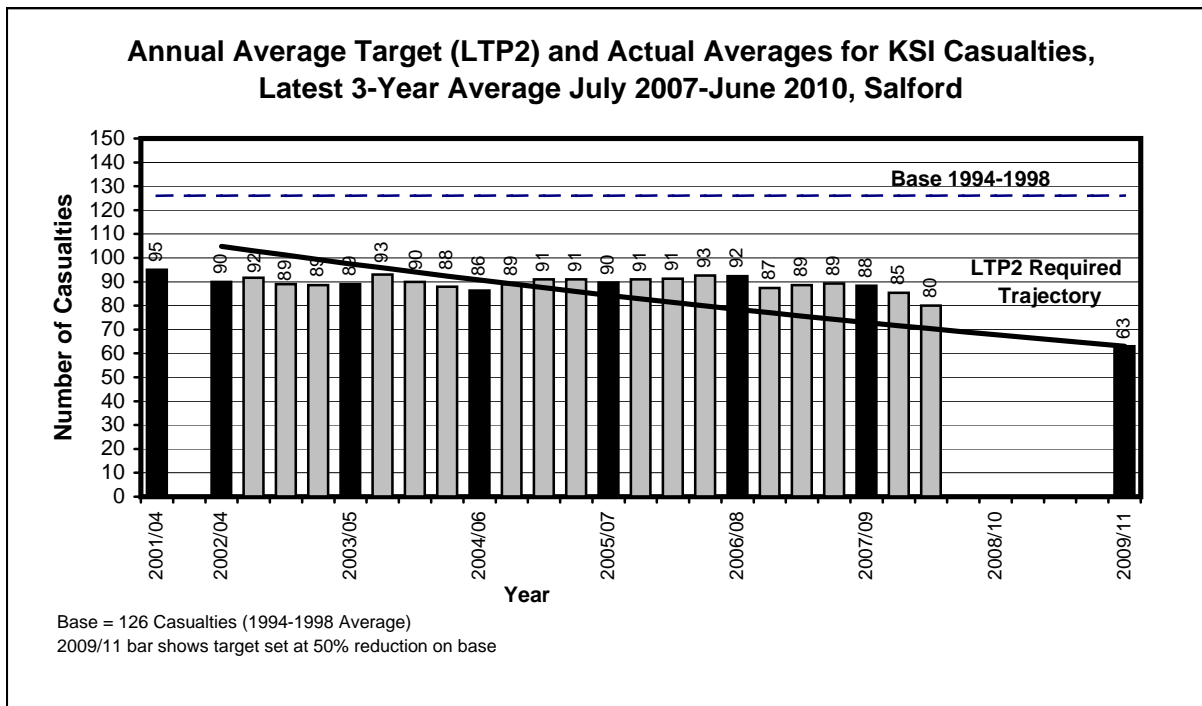
July 2007 - June 2010

#### KSI Casualties: 50% casualty reduction on 1994-1998 baseline by 2010

Salford KSI Casualties, Latest 3-Year Average, from July 07 to June 10

Annual Average Target (LTP2) and Actual Averages for KSI Casualties				
Year	Annual Average		Index	
	Trajectory	Actual	Trajectory	Actual
1994-1998 baseline		126		100
2001-2004: baseline		95		75
2003: average 2002/2003/2004	105	90	83	71
2004: average 2003/2004/2005	97	89	77	71
2005: average 2004/2005/2006	91	86	72	69
2006: average 2005/2006/2007	84	90	67	71
2007: average 2006/2007/2008	78	92	62	73
2008: average 2007/2008/2009	73	88	58	70
Average Apr 07-Mar 10	72	85	57	68
Average Jul 07-Jun 10	70	80	56	63
2009: average 2008/2009/2010	68		54	
Target 2010: average 2009/2010/2011	63		50	

Note: The casualties for the target year will not be known until February/March 2012 (when the full 2011 data is available)





## LTP2 FACTSHEET

### GREATER MANCHESTER TRANSPORTATION UNIT

SALFORD CHILD KSI CASUALTY STATISTICS

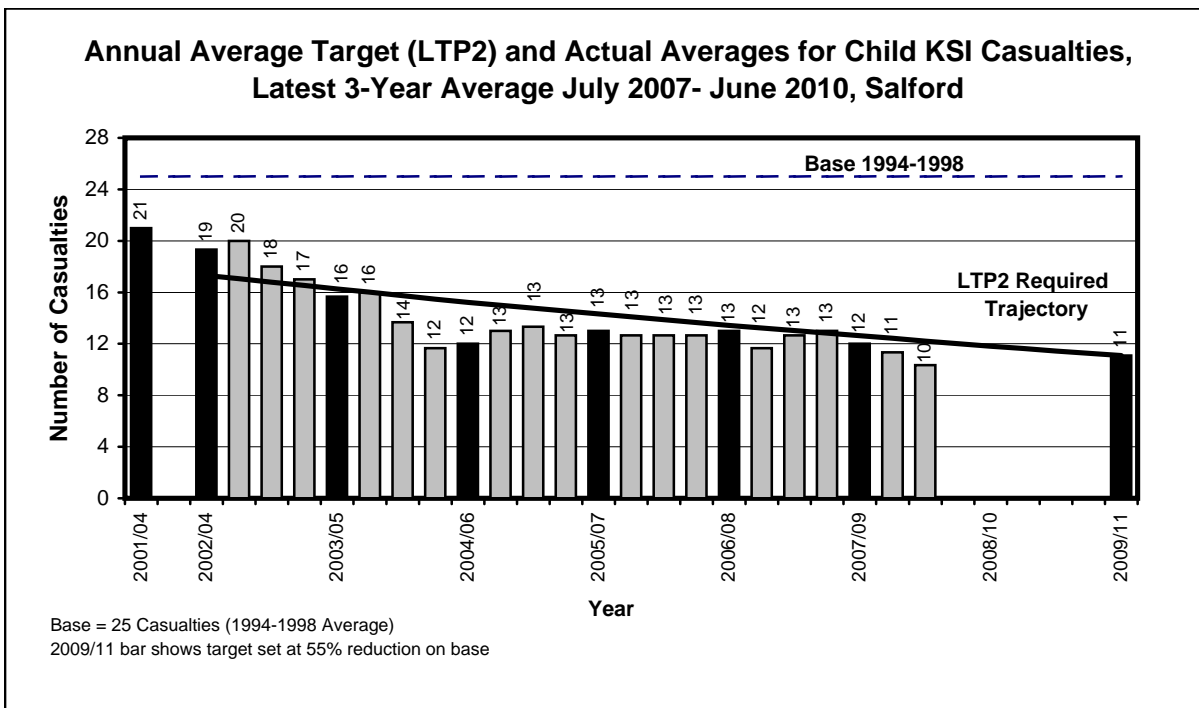
July 2007 - June 2010

#### Child KSI Casualties: 55% casualty reduction on 1994-1998 baseline by 2010

Salford Child KSI Casualties, Latest 3-Year Average, from July 07 to June 10

Annual Average Target (LTP2) and Actual Averages for Child KSI Casualties				
Year	Annual Average		Index	
	Trajectory	Actual	Trajectory	Actual
1994-1998 baseline		25		100
2001-2004: baseline		21		85
2003: average 2002/2003/2004	17	19	70	79
2004: average 2003/2004/2005	16	16	66	64
2005: average 2004/2005/2006	15	12	62	49
2006: average 2005/2006/2007	14	13	58	53
2007: average 2006/2007/2008	13	13	55	53
2008: average 2007/2008/2009	13	12	51	49
Average Apr 07-Mar 10	12	11	50	46
Average Jul 07-Jun 10	12	10	50	42
2009: average 2008/2009/2010	12		48	
Target 2010: average 2009/2010/2011	11		45	

Note: The casualties for the target year will not be known until February/March 2012 (when the full 2011 data is available)





## LTP2 FACTSHEET

### GREATER MANCHESTER TRANSPORTATION UNIT

#### SALFORD SLIGHTLY INJURED CASUALTY STATISTICS

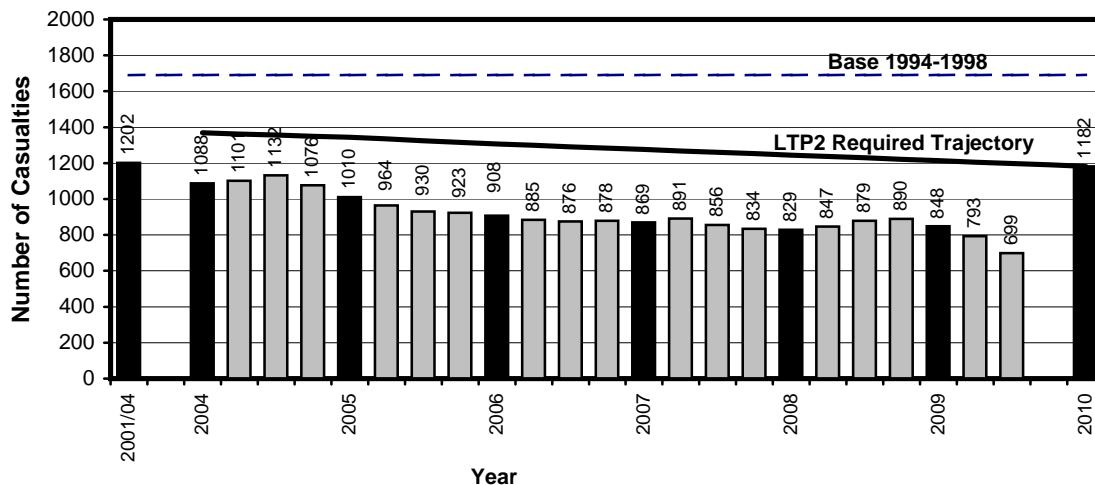
July 2009 - June 2010

### Slight Casualties: 30% casualty reduction on 1994-1998 baseline by 2010

Salford Slight Casualties, Latest 12 Months, from July 09 to June 10

Target (LTP2) and Actual Numbers for Slight Casualties				
Year	Number		Index	
	Trajectory	Actual	Trajectory	Actual
1994-1998 baseline		1689		100
2001-2004: baseline		1202		71
2004	1369	1088	81	64
2005	1344	1010	80	60
2006	1307	908	77	54
2007	1276	869	76	51
2008	1245	829	74	49
2009	1214	848	72	50
<i>Apr 09-Mar 10</i>	1206	793	71	47
<i>Jul 09-Jun 10</i>	1198	699	71	41
Target 2010	1182		70	

**Target (LTP2) and Actual Numbers for Slight Casualties,  
Latest 12 Months July 2009- June 2010, Salford**



Base = 1689 Casualties (1994-1998 Average)

2010 bar shows target set at 30% reduction on base

# Greater Manchester Transportation Unit



## PEDESTRIAN AND PEDAL CYCLE FACTSHEET

### SALFORD PEDESTRIAN AND PEDAL CYCLE CASUALTY STATISTICS

July 08 - June 09, July 09 - June 10, Base

#### Salford Pedestrian Casualties by Road Class

July 08 - June 09, July 09 - June 10, Base

Road Class	Base <sup>(1)</sup> Ave 1994-98	Jul 08 - Jun 09	Jul 09 - Jun 10	% Change ( 09 - 10/ 08 - 09 )	% Change ( 09 - 10 /Base )
Motorway	1	1	1	-(3)	-(3)
A Class Road <sup>(2)</sup>	118	56	51	-8.9	-56.8
B Class Roads	34	17	18	5.9	-47.1
Minor Roads	104	57	25	-56.1	-76.0
Non-Motorways	256	130	94	-27.7	-63.3
<b>Total</b>	<b>257</b>	<b>131</b>	<b>95</b>	<b>-27.5</b>	<b>-63.0</b>

#### Salford Pedal Cycle Casualties by Road Class

July 08 - June 09, July 09 - June 10, Base

Road Class	Base <sup>(1)</sup> Ave 1994-98	Jul 08 - Jun 09	Jul 09 - Jun 10	% Change ( 09 - 10/ 08 - 09 )	% Change ( 09 - 10 /Base )
Motorway	1	0	0	-(3)	-(3)
A Class Roads <sup>(2)</sup>	53	39	43	10.3	-18.9
B Class Roads	13	8	13	62.5	0.0
Minor Roads	51	17	20	17.6	-60.8
Non-Motorways	117	64	76	18.8	-35.0
<b>Total</b>	<b>118</b>	<b>64</b>	<b>76</b>	<b>18.8</b>	<b>-35.6</b>

**Notes :-**

1. Base figures are rounded to the nearest whole number
2. A roads include the A580 which was de-trunked on 1 April 2004
3. Casualty numbers too small to make % changes meaningful





## LTP2 FACTSHEET

### GREATER MANCHESTER TRANSPORTATION UNIT

STOCKPORT KSI CASUALTY STATISTICS

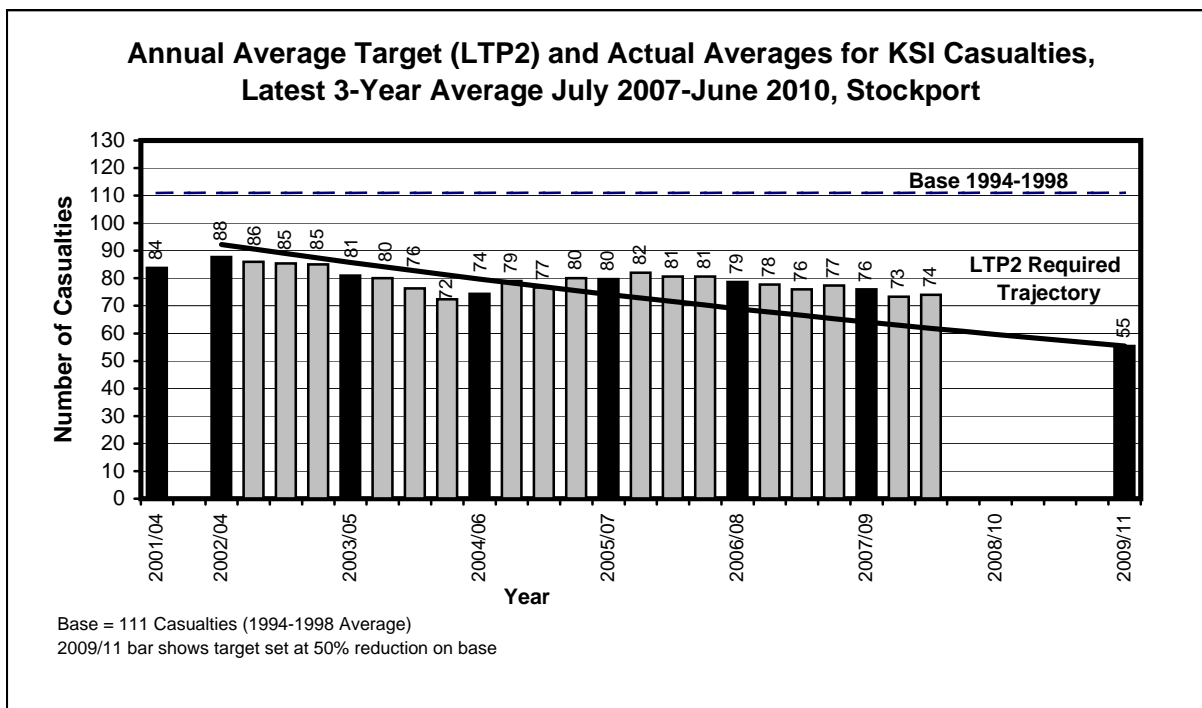
July 2007 - June 2010

#### KSI Casualties: 50% casualty reduction on 1994-1998 baseline by 2010

Stockport KSI Casualties, Latest 3-Year Average, from July 07 to June 10

Year	Annual Average		Index	
	Trajectory	Actual	Trajectory	Actual
1994-1998 baseline		111		100
2001-2004: baseline		84		76
2003: average 2002/2003/2004	92	88	83	79
2004: average 2003/2004/2005	86	81	77	73
2005: average 2004/2005/2006	80	74	72	67
2006: average 2005/2006/2007	74	80	67	72
2007: average 2006/2007/2008	69	79	62	71
2008: average 2007/2008/2009	64	76	58	69
<i>Average Apr 07-Mar 10</i>	63	73	57	66
<i>Average Jul 07-Jun 10</i>	62	74	56	67
2009: average 2008/2009/2010	60		54	
Target 2010: average 2009/2010/2011	55		50	

Note: The casualties for the target year will not be known until February/March 2012 (when the full 2011 data is available)





## LTP2 FACTSHEET

### GREATER MANCHESTER TRANSPORTATION UNIT

STOCKPORT CHILD KSI CASUALTY STATISTICS

July 2007 - June 2010

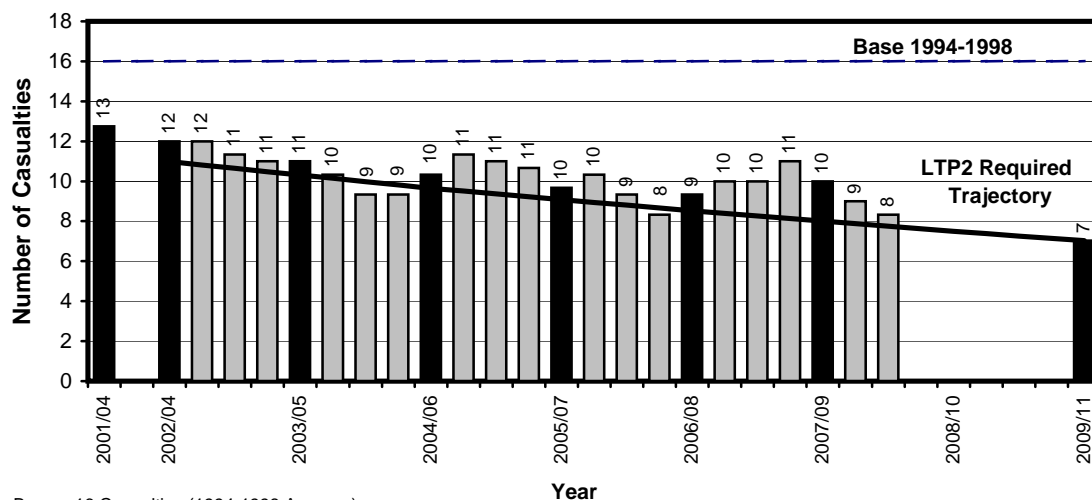
#### Child KSI Casualties: 55% casualty reduction on 1994-1998 baseline by 2010

Stockport Child KSI Casualties, Latest 3-Year Average, from July 07 to June 10

Annual Average Target (LTP2) and Actual Averages for Child KSI Casualties				
Year	Annual Average		Index	
	Trajectory	Actual	Trajectory	Actual
1994-1998 baseline		16		100
2001-2004: baseline		13		82
2003: average 2002/2003/2004	11	12	70	77
2004: average 2003/2004/2005	10	11	66	71
2005: average 2004/2005/2006	10	10	62	66
2006: average 2005/2006/2007	9	10	58	62
2007: average 2006/2007/2008	9	9	55	60
2008: average 2007/2008/2009	8	10	51	64
Average Apr 07-Mar 10	8	9	50	58
Average Jul 07-Jun 10	8	8	50	53
2009: average 2008/2009/2010	7		48	
Target 2010: average 2009/2010/2011	7		45	

Note: The casualties for the target year will not be known until February/March 2012 (when the full 2011 data is available)

**Annual Average Target (LTP2) and Actual Averages for Child KSI Casualties,  
Latest 3-Year Average July 2007-June 2010, Stockport**



Base = 16 Casualties (1994-1998 Average)  
2009/11 bar shows target set at 55% reduction on base



## LTP2 FACTSHEET

### GREATER MANCHESTER TRANSPORTATION UNIT

#### STOCKPORT SLIGHTLY INJURED CASUALTY STATISTICS

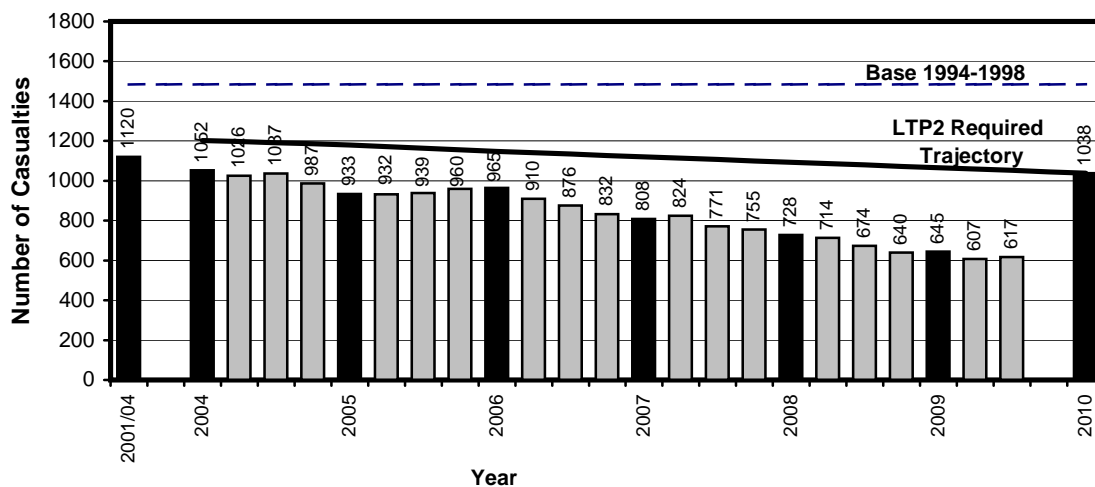
July 2009 - June 2010

### Slight Casualties: 30% casualty reduction on 1994-1998 baseline by 2010

Stockport Slight Casualties, Latest 12 Months, from July 09 to June 10

Target (LTP2) and Actual Numbers for Slight Casualties				
Year	Number		Index	
	Trajectory	Actual	Trajectory	Actual
1994-1998 baseline		1483		100
2001-2004: baseline		1120		75
2004	1202	1052	81	71
2005	1180	933	80	63
2006	1148	965	77	65
2007	1120	808	76	54
2008	1093	728	74	49
2009	1066	645	72	43
Apr 09-Mar 10	1059	607	71	41
Jul 09-Jun 10	1052	617	71	42
Target 2010	1038		70	

Target (LTP2) and Actual Numbers for Slight Casualties,  
Latest 12 Months July 2009-June 2010, Stockport



Base = 1483 Casualties (1994-1998 Average)

2010 bar shows target set at 30% reduction on base

# Greater Manchester Transportation Unit



## PEDESTRIAN AND PEDAL CYCLE FACTSHEET

### STOCKPORT PEDESTRIAN AND PEDAL CYCLE CASUALTY STATISTICS

July 08 - June 09, July 09 - June 10, Base

#### Stockport Pedestrian Casualties by Road Class

July 08 - June 09, July 09 - June 10, Base

Road Class	Base <sup>(1)</sup> Ave 1994-98	Jul 08 - Jun 09	Jul 09 - Jun 10	% Change ( 09 - 10/ 08 - 09 )	% Change ( 09 - 10 /Base )
Motorway	1	1	0	-(3)	-(3)
A Class Road <sup>(2)</sup>	83	52	44	-15.4	-47.0
B Class Roads	33	16	17	6.3	-48.5
Minor Roads	108	59	59	0.0	-45.4
Non-Motorways	224	127	120	-5.5	-46.4
<b>Total</b>	<b>225</b>	<b>128</b>	<b>120</b>	<b>-6.3</b>	<b>-46.7</b>

#### Stockport Pedal Cycle Casualties by Road Class

July 08 - June 09, July 09 - June 10, Base

Road Class	Base <sup>(1)</sup> Ave 1994-98	Jul 08 - Jun 09	Jul 09 - Jun 10	% Change ( 09 - 10/ 08 - 09 )	% Change ( 09 - 10 /Base )
Motorway	0	0	0	-(3)	-(3)
A Class Roads <sup>(2)</sup>	46	26	38	46.2	-17.4
B Class Roads	16	15	12	-20.0	-25.0
Minor Roads	52	26	31	19.2	-40.4
Non-Motorways	114	67	81	20.9	-28.9
<b>Total</b>	<b>115</b>	<b>67</b>	<b>81</b>	<b>20.9</b>	<b>-29.6</b>

**Notes :-**

1. Base figures are rounded to the nearest whole number
2. A roads include the A6 and A523, both of which were de-trunked on 17 May 2002
3. Casualty numbers too small to make % changes meaningful



## LTP2 FACTSHEET

### GREATER MANCHESTER TRANSPORTATION UNIT

TAMESIDE KSI CASUALTY STATISTICS

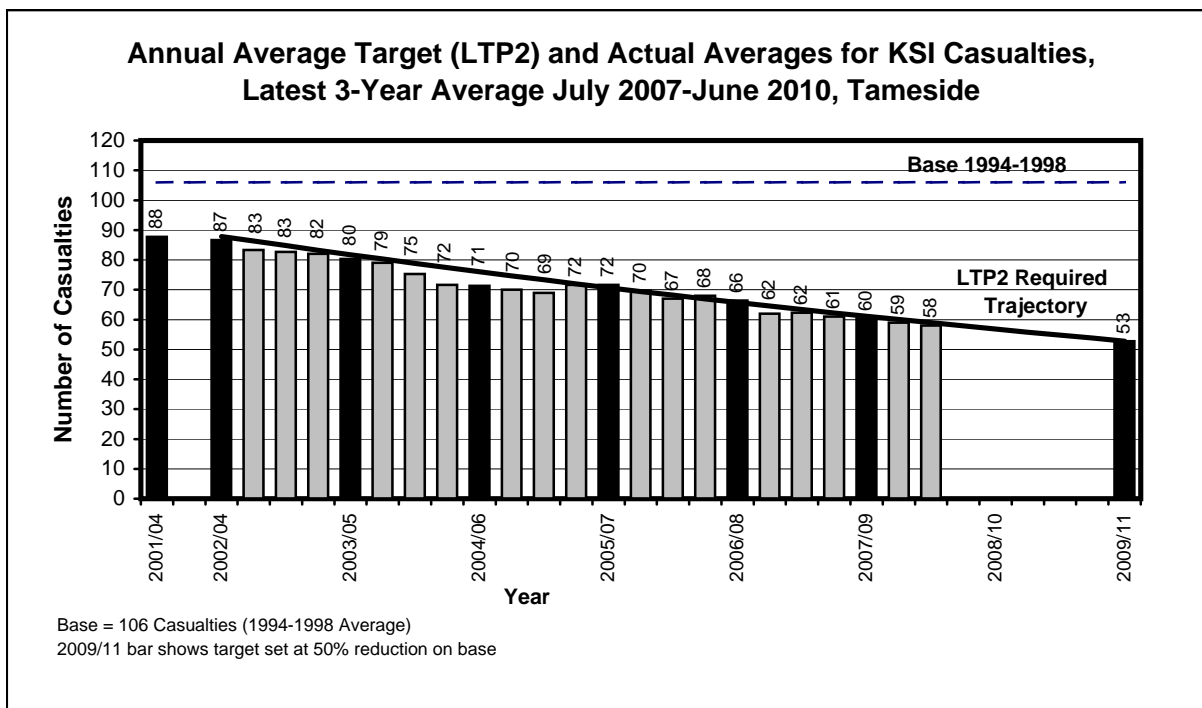
July 2007 - June 2010

#### KSI Casualties: 50% casualty reduction on 1994-1998 baseline by 2010

Tameside KSI Casualties, Latest 3-Year Average, from July 07 to June 10

Year	Annual Average		Index	
	Trajectory	Actual	Trajectory	Actual
1994-1998 baseline		106		100
2001-2004: baseline		88		83
2003: average 2002/2003/2004	88	87	83	82
2004: average 2003/2004/2005	82	80	77	76
2005: average 2004/2005/2006	76	71	72	68
2006: average 2005/2006/2007	71	72	67	68
2007: average 2006/2007/2008	66	66	62	63
2008: average 2007/2008/2009	61	60	58	57
<i>Average Apr 07-Mar 10</i>	60	59	57	56
<i>Average Jul 07-Jun 10</i>	59	58	56	55
2009: average 2008/2009/2010	57		54	
Target 2010: average 2009/2010/2011	53		50	

Note: The casualties for the target year will not be known until February/March 2012 (when the full 2011 data is available)





## LTP2 FACTSHEET

### GREATER MANCHESTER TRANSPORTATION UNIT

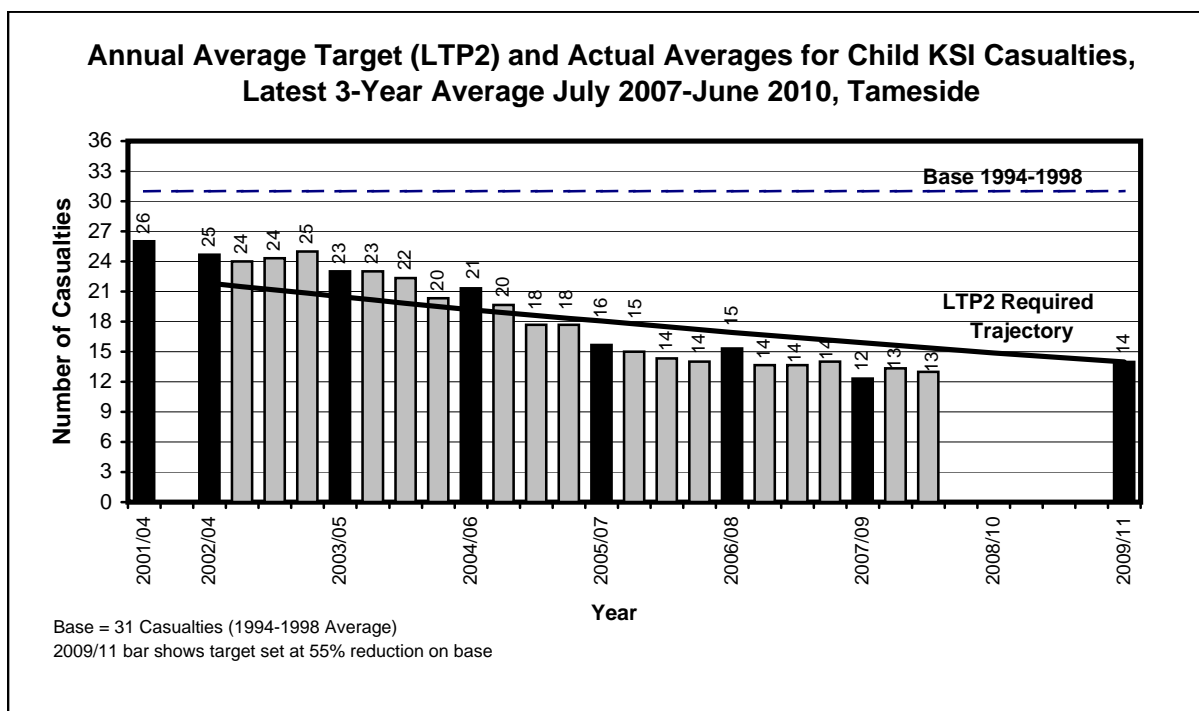
TAMESIDE CHILD KSI CASUALTY STATISTICS  
July 2007 - June 2010

#### Child KSI Casualties: 55% casualty reduction on 1994-1998 baseline by 2010

Tameside Child KSI Casualties, Latest 3-Year Average, from July 07 to June 10

Annual Average Target (LTP2) and Actual Averages for Child KSI Casualties				
Year	Annual Average		Index	
	Trajectory	Actual	Trajectory	Actual
1994-1998 baseline		31		100
2001-2004: baseline		26		84
2003: average 2002/2003/2004	22	25	70	80
2004: average 2003/2004/2005	20	23	66	74
2005: average 2004/2005/2006	19	21	62	69
2006: average 2005/2006/2007	18	16	58	51
2007: average 2006/2007/2008	17	15	55	49
2008: average 2007/2008/2009	16	12	51	40
<i>Average Apr 07-Mar 10</i>	16	13	50	43
<i>Average Jul 07-Jun 10</i>	15	13	50	42
2009: average 2008/2009/2010	15		48	
Target 2010: average 2009/2010/2011	14		45	

Note: The casualties for the target year will not be known until February/March 2012 (when the full 2011 data is available)





## LTP2 FACTSHEET

### GREATER MANCHESTER TRANSPORTATION UNIT

#### TAMESIDE SLIGHTLY INJURED CASUALTY STATISTICS

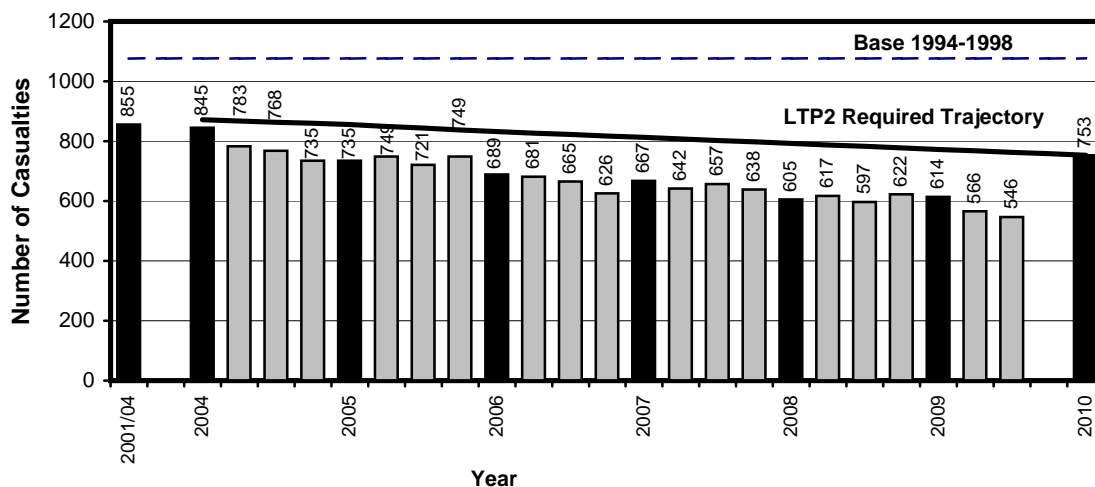
July 2009 - June 2010

### Slight Casualties: 30% casualty reduction on 1994-1998 baseline by 2010

Tameside Slight Casualties, Latest 12 Months, from July 09 to June 10

Target (LTP2) and Actual Numbers for Slight Casualties				
Year	Number		Index	
	Trajectory	Actual	Trajectory	Actual
1994-1998 baseline		1076		100
2001-2004: baseline		855		80
2004	872	845	81	79
2005	856	735	80	68
2006	832	689	77	64
2007	812	667	76	62
2008	793	605	74	56
2009	773	614	72	57
Apr 09-Mar 10	768	566	71	53
Jul 09-Jun 10	763	546	71	51
Target 2010	753		70	

Target (LTP2) and Actual Numbers for Slight Casualties,  
Latest 12 Months July 2009-June 2010, Tameside



Base = 1076 Casualties (1994-1998 Average)  
2010 bar shows target set at 30% reduction on base

# Greater Manchester Transportation Unit



## PEDESTRIAN AND PEDAL CYCLE FACTSHEET

### TAMESIDE PEDESTRIAN AND PEDAL CYCLE CASUALTY STATISTICS

July 08 - June 09, July 09 - June 10, Base

#### Tameside Pedestrian Casualties by Road Class

July 08 - June 09, July 09 - June 10, Base

Road Class	Base <sup>(1)</sup> Ave 1994-98	Jul 08 - Jun 09	Jul 09 - Jun 10	% Change ( 09 - 10/ 08 - 09 )	% Change ( 09 - 10 /Base )
Motorway	0	0	0	-(3)	-(3)
A Class Road <sup>(2)</sup>	76	42	37	-11.9	-51.3
B Class Roads	27	17	13	-23.5	-51.9
Minor Roads	117	51	56	9.8	-52.1
Non-Motorways	220	110	106	-3.6	-51.8
<b>Total</b>	<b>221</b>	<b>110</b>	<b>106</b>	<b>-3.6</b>	<b>-52.0</b>

#### Tameside Pedal Cycle Casualties by Road Class

July 08 - June 09, July 09 - June 10, Base

Road Class	Base <sup>(1)</sup> Ave 1994-98	Jul 08 - Jun 09	Jul 09 - Jun 10	% Change ( 09 - 10/ 08 - 09 )	% Change ( 09 - 10 /Base )
Motorway	0	0	0	-(3)	-(3)
A Class Roads <sup>(2)</sup>	26	16	19	18.8	-26.9
B Class Roads	8	6	6	0.0	-25.0
Minor Roads	45	11	17	54.5	-62.2
Non-Motorways	78	33	42	27.3	-46.2
<b>Total</b>	<b>78</b>	<b>33</b>	<b>42</b>	<b>27.3</b>	<b>-46.2</b>

#### Notes :-

1. Base figures are rounded to the nearest whole number
2. A roads include the A57 and A628(T)  
The A57 between Laburnum Road and the M60 (J24) was de-trunked on 1 May 2002
3. Casualty numbers too small to make % changes meaningful





## LTP2 FACTSHEET

### GREATER MANCHESTER TRANSPORTATION UNIT

TRAFFORD KSI CASUALTY STATISTICS

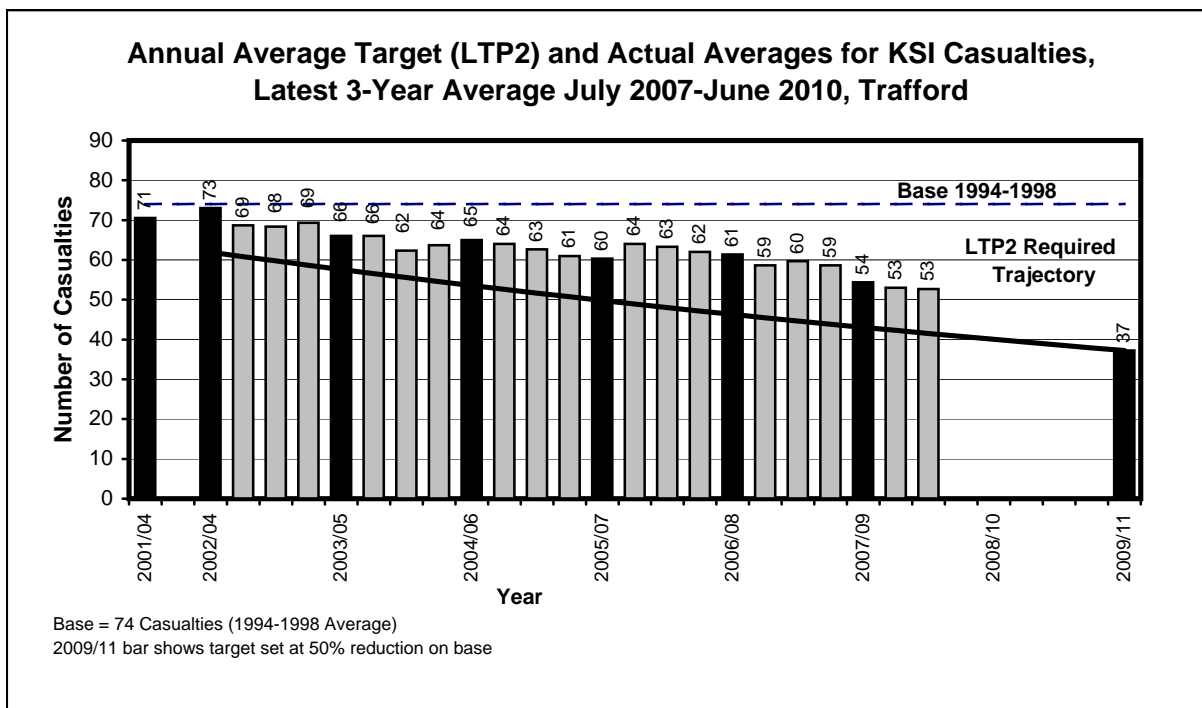
July 2007 - June 2010

#### KSI Casualties: 50% casualty reduction on 1994-1998 baseline by 2010

Trafford KSI Casualties, Latest 3-Year Average, from July 07 to June 10

Annual Average Target (LTP2) and Actual Averages for KSI Casualties				
Year	Annual Average		Index	
	Trajectory	Actual	Trajectory	Actual
1994-1998 baseline		74		100
2001-2004: baseline		71		95
2003: average 2002/2003/2004	62	73	83	98
2004: average 2003/2004/2005	58	66	77	89
2005: average 2004/2005/2006	54	65	72	87
2006: average 2005/2006/2007	50	60	67	81
2007: average 2006/2007/2008	46	61	62	82
2008: average 2007/2008/2009	43	54	58	73
<i>Average Apr 07-Mar 10</i>	42	53	57	71
<i>Average Jul 07-Jun 10</i>	42	53	56	71
2009: average 2008/2009/2010	40		54	
Target 2010: average 2009/2010/2011	37		50	

Note: The casualties for the target year will not be known until February/March 2012 (when the full 2011 data is available)





## LTP2 FACTSHEET

### GREATER MANCHESTER TRANSPORTATION UNIT

TRAFFORD CHILD KSI CASUALTY STATISTICS

July 2007 - June 2010

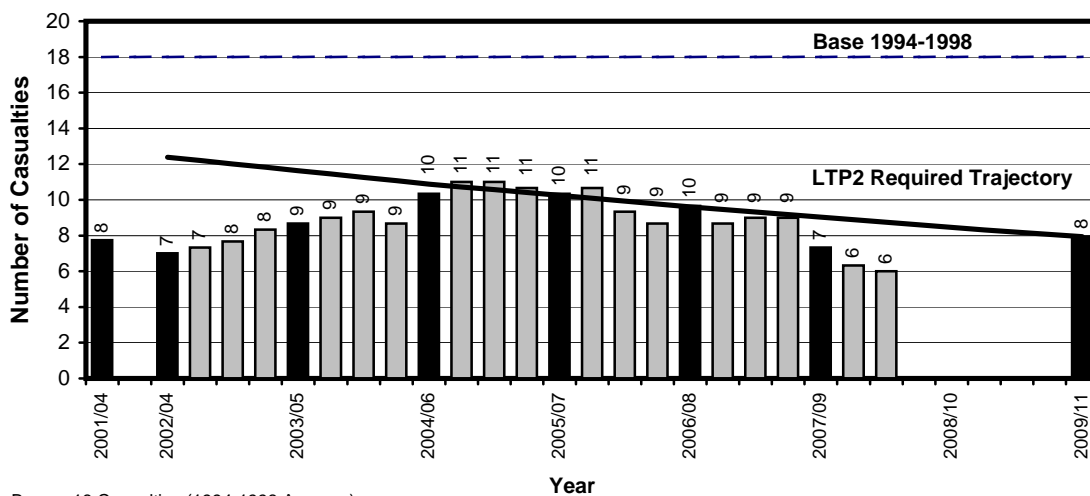
#### Child KSI Casualties: 55% casualty reduction on 1994-1998 baseline by 2010

Trafford Child KSI Casualties, Latest 3-Year Average, from July 07 to June 10

Annual Average Target (LTP2) and Actual Averages for Child KSI Casualties				
Year	Annual Average		Index	
	Trajectory	Actual	Trajectory	Actual
1994-1998 baseline		18		100
2001-2004: baseline		8		44
2003: average 2002/2003/2004	12	7	70	40
2004: average 2003/2004/2005	12	9	66	49
2005: average 2004/2005/2006	11	10	62	59
2006: average 2005/2006/2007	10	10	58	59
2007: average 2006/2007/2008	10	10	55	55
2008: average 2007/2008/2009	9	7	51	42
<i>Average Apr 07-Mar 10</i>	9	6	50	36
<i>Average Jul 07-Jun 10</i>	9	6	50	34
2009: average 2008/2009/2010	8		48	
Target 2010: average 2009/2010/2011	8		45	

Note: The casualties for the target year will not be known until February/March 2012 (when the full 2011 data is available)

**Annual Average Target (LTP2) and Actual Averages for Child KSI Casualties,  
Latest 3-Year Average July 2007-June 2010, Trafford**



Base = 18 Casualties (1994-1998 Average)  
2009/11 bar shows target set at 55% reduction on base



## LTP2 FACTSHEET

### GREATER MANCHESTER TRANSPORTATION UNIT

#### TRAFFORD SLIGHTLY INJURED CASUALTY STATISTICS

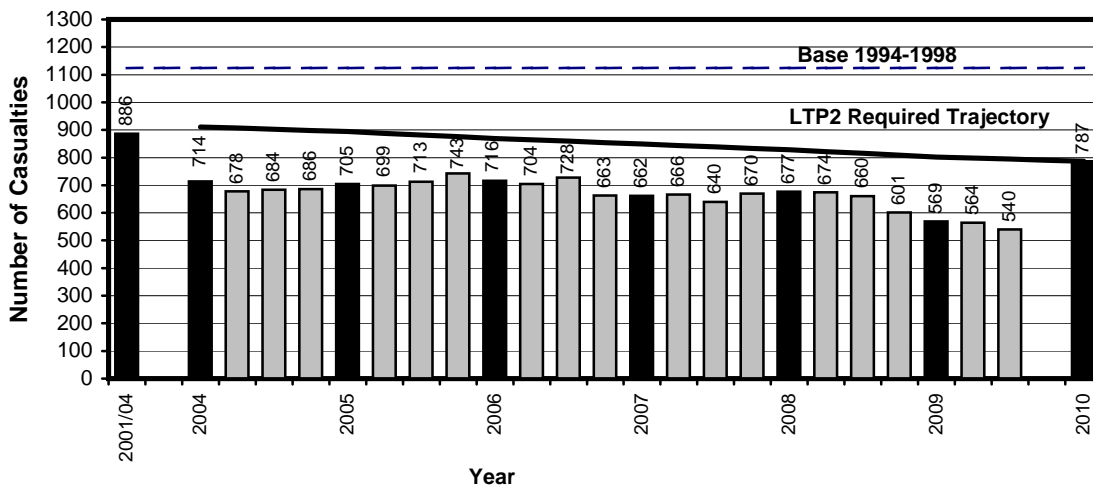
July 2009 - June 2010

### Slight Casualties: 30% casualty reduction on 1994-1998 baseline by 2010

Trafford Slight Casualties, Latest 12 Months, from July 09 to June 10

Target (LTP2) and Actual Numbers for Slight Casualties				
Year	Number		Index	
	Trajectory	Actual	Trajectory	Actual
1994-1998 baseline		1124		100
2001-2004: baseline		886		79
2004	911	714	81	64
2005	894	705	80	63
2006	869	716	77	64
2007	849	662	76	59
2008	828	677	74	60
2009	802	569	71	51
Apr 09-Mar 10	798	564	71	50
Jul 09-Jun 10	795	540	71	48
Target 2010	787		70	

Target (LTP2) and Actual Numbers for Slight Casualties,  
Latest 12 Months July 2009-June 2010, Trafford



Base = 1124 Casualties (1994-1998 Average)  
2010 bar shows target set at 30% reduction on base

# Greater Manchester Transportation Unit



## PEDESTRIAN AND PEDAL CYCLE FACTSHEET

### TRAFFORD PEDESTRIAN AND PEDAL CYCLE CASUALTY STATISTICS

July 08 - June 09, July 09 - June 10, Base

#### Trafford Pedestrian Casualties by Road Class

July 08 - June 09, July 09 - June 10, Base

Road Class	Base <sup>(1)</sup> Ave 1994-98	Jul 08 - Jun 09	Jul 09 - Jun 10	% Change ( 09 - 10/ 08 - 09 )	% Change ( 09 - 10 /Base )
Motorway	1	0	1	-(3)	-(3)
A Class Road <sup>(2)</sup>	52	23	22	-4.3	-57.7
B Class Roads	30	25	7	-72.0	-76.7
Minor Roads	77	46	39	-15.2	-49.4
Non-Motorways	159	94	68	-27.7	-57.2
<b>Total</b>	<b>159</b>	<b>94</b>	<b>69</b>	<b>-26.6</b>	<b>-56.6</b>

#### Trafford Pedal Cycle Casualties by Road Class

July 08 - June 09, July 09 - June 10, Base

Road Class	Base <sup>(1)</sup> Ave 1994-98	Jul 08 - Jun 09	Jul 09 - Jun 10	% Change ( 09 - 10/ 08 - 09 )	% Change ( 09 - 10 /Base )
Motorway	0	0	0	-(3)	-(3)
A Class Roads <sup>(2)</sup>	38	33	25	-24.2	-34.2
B Class Roads	28	27	22	-18.5	-21.4
Minor Roads	60	44	29	-34.1	-51.7
Non-Motorways	126	104	76	-26.9	-39.7
<b>Total</b>	<b>126</b>	<b>104</b>	<b>76</b>	<b>-26.9</b>	<b>-39.7</b>

**Notes :-**

1. Base figures are rounded to the nearest whole number
2. A roads include the A6144. The A6144 was reclassified from the A6144(M) on 24 May 2006
3. Casualty numbers too small to make % changes meaningful



## LTP2 FACTSHEET

### GREATER MANCHESTER TRANSPORTATION UNIT

WIGAN KSI CASUALTY STATISTICS

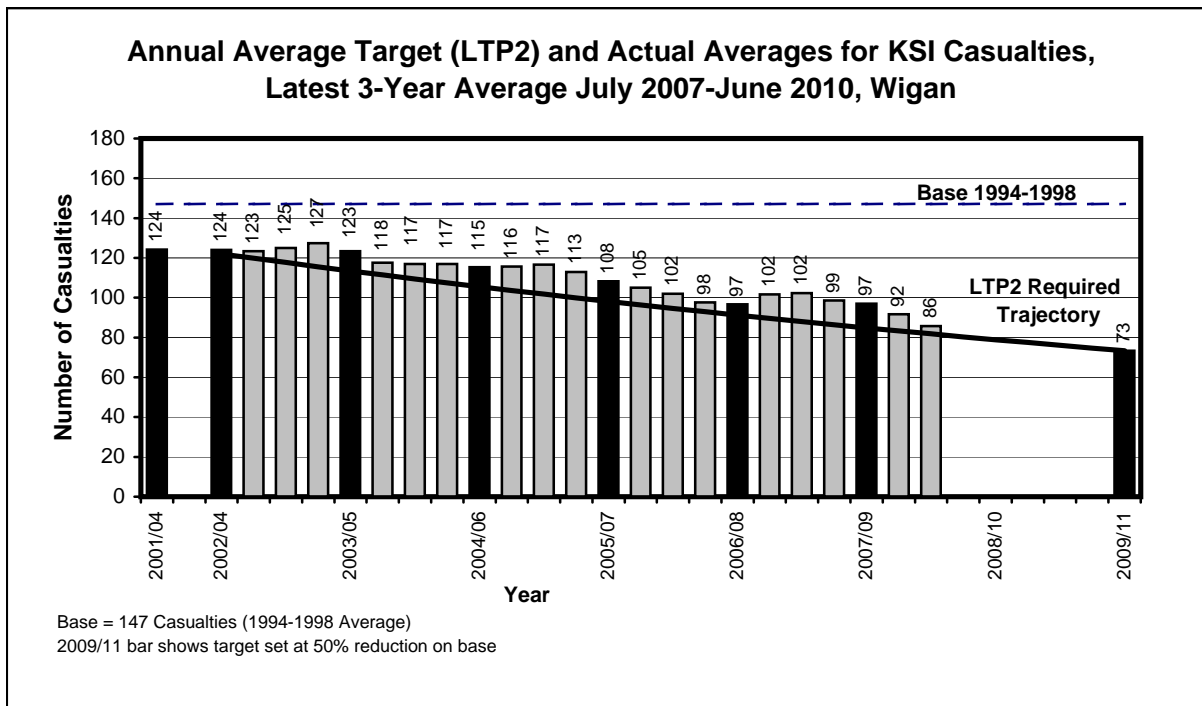
July 2007 - June 2010

#### KSI Casualties: 50% casualty reduction on 1994-1998 baseline by 2010

Wigan KSI Casualties, Latest 3-Year Average, from July 07 to June 10

Year	Annual Average		Index	
	Trajectory	Actual	Trajectory	Actual
1994-1998 baseline		147		100
2001-2004: baseline		124		85
2003: average 2002/2003/2004	122	124	83	85
2004: average 2003/2004/2005	113	123	77	84
2005: average 2004/2005/2006	106	115	72	79
2006: average 2005/2006/2007	98	108	67	74
2007: average 2006/2007/2008	91	97	62	66
2008: average 2007/2008/2009	85	97	58	66
<i>Average Apr 07-Mar 10</i>	83	92	57	63
<i>Average Jul 07-Jun 10</i>	82	86	56	58
2009: average 2008/2009/2010	79		54	
Target 2010: average 2009/2010/2011	73		50	

Note: The casualties for the target year will not be known until February/March 2012 (when the full 2011 data is available)





## LTP2 FACTSHEET

### GREATER MANCHESTER TRANSPORTATION UNIT

WIGAN CHILD KSI CASUALTY STATISTICS

July 2007 - June 2010

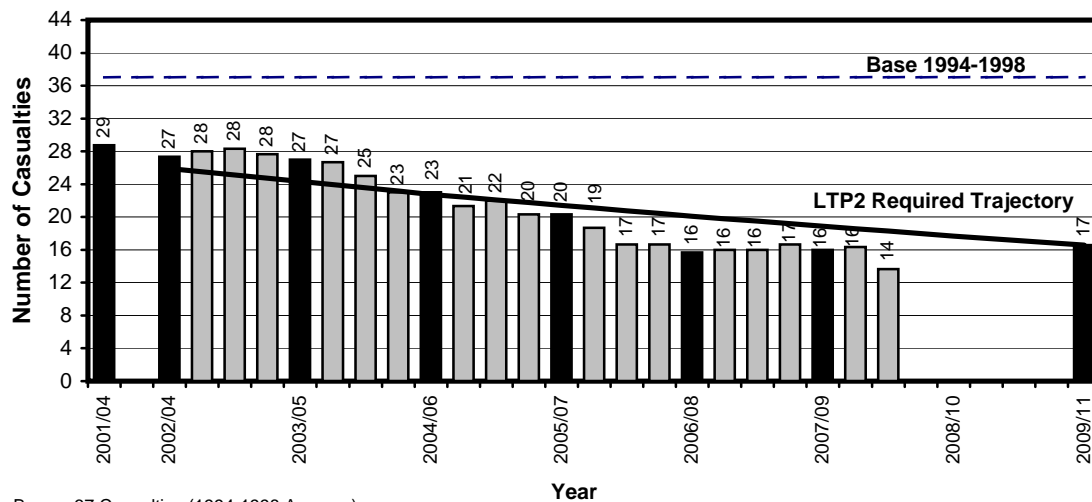
#### Child KSI Casualties: 55% casualty reduction on 1994-1998 baseline by 2010

Wigan Child KSI Casualties, Latest 3-Year Average, from July 07 to June 10

Year	Annual Average		Index	
	Trajectory	Actual	Trajectory	Actual
1994-1998 baseline		37		100
2001-2004: baseline		29		78
2003: average 2002/2003/2004	26	27	70	74
2004: average 2003/2004/2005	24	27	66	73
2005: average 2004/2005/2006	23	23	62	63
2006: average 2005/2006/2007	21	20	58	55
2007: average 2006/2007/2008	20	16	55	43
2008: average 2007/2008/2009	19	16	51	43
<i>Average Apr 07-Mar 10</i>	19	16	50	44
<i>Average Jul 07-Jun 10</i>	18	14	50	37
2009: average 2008/2009/2010	18		48	
Target 2010: average 2009/2010/2011	17		45	

Note: The casualties for the target year will not be known until February/March 2012 (when the full 2011 data is available)

**Annual Average Target (LTP2) and Actual Averages for Child KSI Casualties, Latest 3-Year Average July 2007-June 2010, Wigan**



Base = 37 Casualties (1994-1998 Average)  
2009/11 bar shows target set at 55% reduction on base



## LTP2 FACTSHEET

### GREATER MANCHESTER TRANSPORTATION UNIT

#### WIGAN SLIGHTLY INJURED CASUALTY STATISTICS

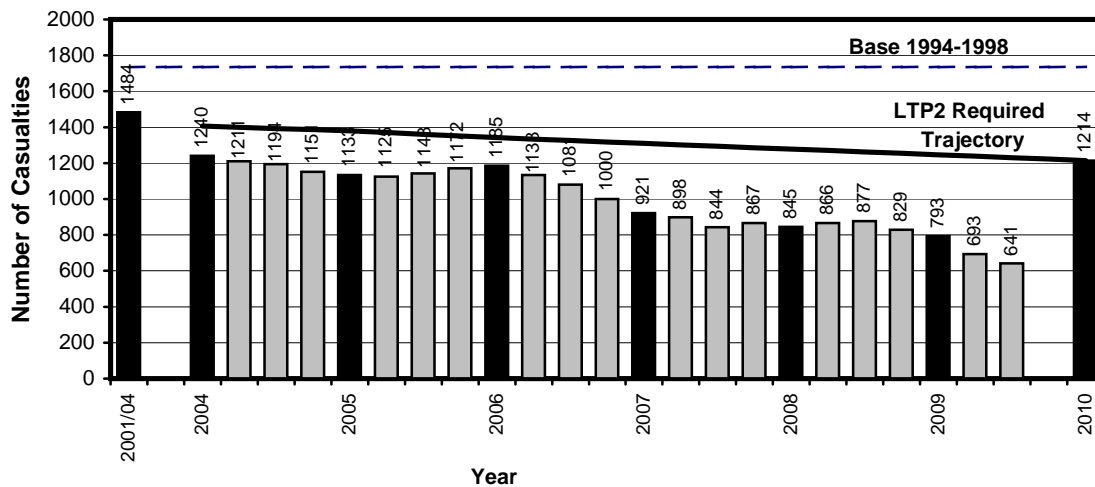
July 2009 - June 2010

#### Slight Casualties: 30% casualty reduction on 1994-1998 baseline by 2010

Wigan Slight Casualties, Latest 12 Months, from July 09 to June 10

Target (LTP2) and Actual Numbers for Slight Casualties				
Year	Number		Index	
	Trajectory	Actual	Trajectory	Actual
1994-1998 baseline		1735		100
2001-2004: baseline		1484		86
2004	1406	1240	81	71
2005	1380	1133	80	65
2006	1342	1185	77	68
2007	1310	921	76	53
2008	1278	845	74	49
2009	1246	793	72	46
Apr 09-Mar 10	1238	693	71	40
Jul 09-Jun 10	1230	641	71	37
Target 2010	1214		70	

Target (LTP2) and Actual Numbers for Slight Casualties,  
Latest 12 Months July 2009-June 2010, Wigan



Base = 1735 Casualties (1994-1998 Average)

2010 bar shows target set at 30% reduction on base

# Greater Manchester Transportation Unit



## PEDESTRIAN AND PEDAL CYCLE FACTSHEET

### WIGAN PEDESTRIAN AND PEDAL CYCLE CASUALTY STATISTICS

July 08 - June 09, July 09 - June 10, Base

#### Wigan Pedestrian Casualties by Road Class

July 08 - June 09, July 09 - June 10, Base

Road Class	Base <sup>(1)</sup> Ave 1994-98	Jul 08 - Jun 09	Jul 09 - Jun 10	% Change ( 09 - 10/ 08 - 09 )	% Change ( 09 - 10 /Base )
Motorway	1	0	0	-(3)	-(3)
A Class Road <sup>(2)</sup>	124	73	40	-45.2	-67.7
B Class Roads	47	21	16	-23.8	-66.0
Minor Roads	151	68	58	-14.7	-61.6
Non-Motorways	322	162	114	-29.6	-64.6
<b>Total</b>	<b>323</b>	<b>162</b>	<b>114</b>	<b>-29.6</b>	<b>-64.7</b>

#### Wigan Pedal Cycle Casualties by Road Class

July 08 - June 09, July 09 - June 10, Base

Road Class	Base <sup>(1)</sup> Ave 1994-98	Jul 08 - Jun 09	Jul 09 - Jun 10	% Change ( 09 - 10/ 08 - 09 )	% Change ( 09 - 10 /Base )
Motorway	0	0	0	-(3)	-(3)
A Class Roads <sup>(2)</sup>	52	24	26	8.3	-50.0
B Class Roads	14	5	6	20.0	-57.1
Minor Roads	67	22	33	50.0	-50.7
Non-Motorways	133	51	65	27.5	-51.1
<b>Total</b>	<b>133</b>	<b>51</b>	<b>65</b>	<b>27.5</b>	<b>-51.1</b>

**Notes :-**

1. Base figures are rounded to the nearest whole number
2. A roads include the A580 which was de-trunked on 1 April 2004
3. Casualty numbers too small to make % changes meaningful