

# VISION 2020 FACTSHEET



THE SURVEYS, RESEARCH & ANALYSIS DEPARTMENT

GREATER MANCHESTER KSI CASUALTY STATISTICS

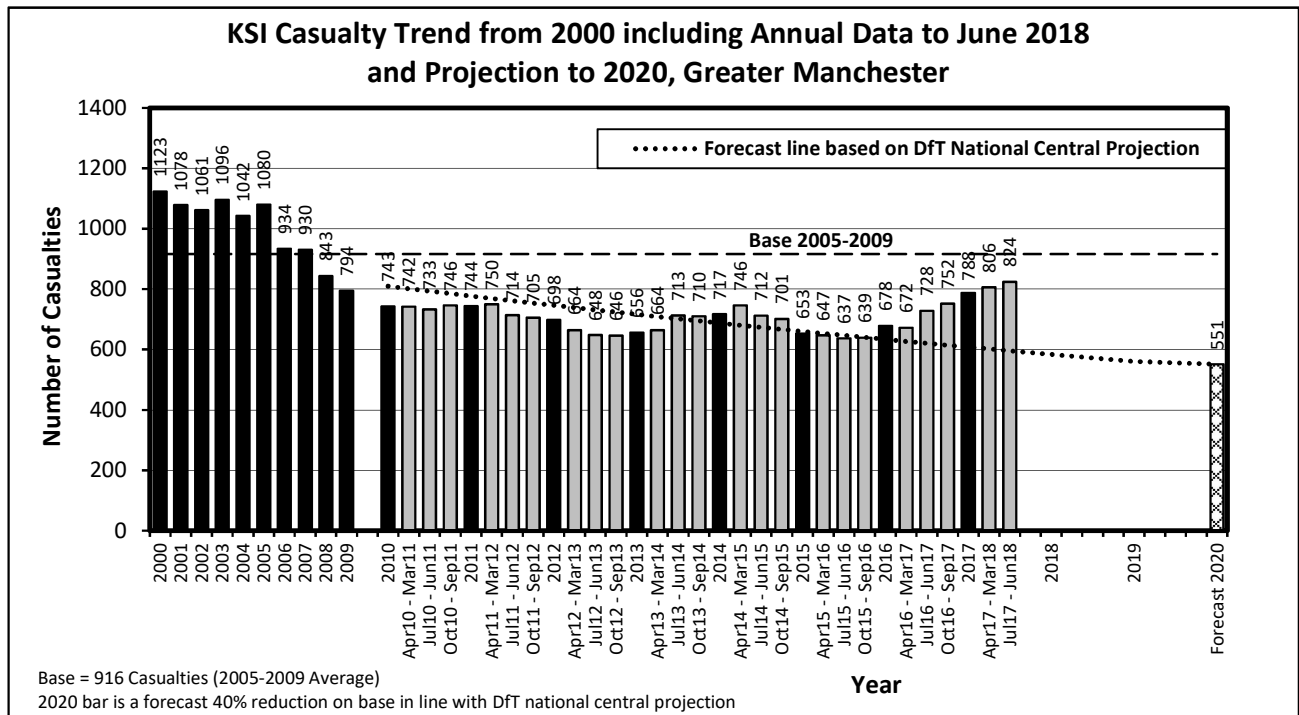
Latest 12 Months Data July 2017 to June 2018

## KSI Casualties: Casualty Trend 2000 - June 2018 and Projection to 2020

The table shows Greater Manchester KSI casualties from 2000 - June 2018 and forecast casualty reductions based on the DfT National Central Projection as outlined in the Strategic Framework for Road Safety

KSI Casualty Trend 2000 - June 2018 and Projection to 2020				
Year	KSI Casualty Totals		Index	
	Actual	Projection	Actual	Projection
2000	1123			
2001	1078			
2002	1061			
2003	1096			
2004	1042			
2005	1080			
2006	934			
2007	930			
2008	843			
2009	794			
2005-2009 Baseline	916		100	
2010	743	810	81	88
2011	744	777	81	85
2012	698	746	76	81
2013	656	716	72	78
2014	717	687	78	75
2015	653	660	71	72
2016	678	634	74	69
2017	788	608	86	66
Apr 2017-Mar 2018	806	602	88	66
Jul 2017-Jun 2018	824	596	90	65
2018		584		64
2019		560		61
2020		551		60

Note: Index is based on 2005-2009 average



<b>Progress Towards KSI Casualty Reduction Forecast by District</b>			
<b>District</b>	<b>KSI</b>		
	<b>Base</b>	<b>Jul 17 to Jun 18</b>	<b>Vision 2020</b>
Bolton	94	89	57
Bury	64	39	38
Manchester	222	200	133
Oldham	78	60	47
Rochdale	71	53	42
Salford	86	86	52
Stockport	77	77	47
Tameside	64	70	38
Trafford	57	68	35
Wigan	103	82	62
<b>Greater Manchester</b>	<b>916</b>	<b>824</b>	<b>551</b>

<b>Index of Progress Towards KSI Casualty Reduction Forecast by District</b>			
<b>District</b>	<b>KSI</b>		
	<b>Base</b>	<b>Jul 17 to Jun 18</b>	<b>Vision 2020</b>
Bolton	100	94	60
Bury	100	61	60
Manchester	100	90	60
Oldham	100	77	60
Rochdale	100	75	60
Salford	100	100	60
Stockport	100	99	60
Tameside	100	110	60
Trafford	100	118	60
Wigan	100	79	60
<b>Greater Manchester</b>	<b>100</b>	<b>90</b>	<b>60</b>

Note: Base = Average 2005-2009 = 100