

VISION 2020 FACTSHEET



THE SURVEYS, RESEARCH & ANALYSIS DEPARTMENT

GREATER MANCHESTER KSI CASUALTY STATISTICS

Latest 12 Months Data July 2017 to June 2018

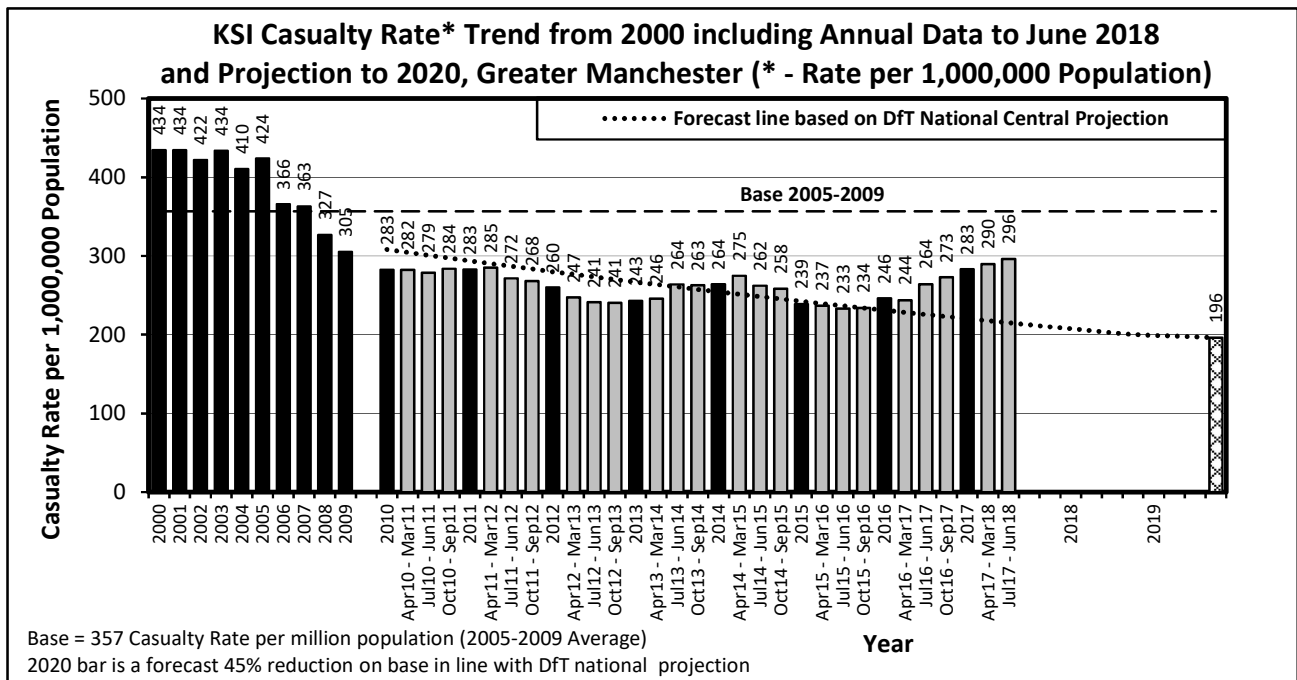
KSI Casualty Rates: Casualty Rate Trend 2000 - June 2018 and Projection to 2020

The table shows Greater Manchester KSI casualty rates* from 2000 - June 2018 and forecast casualty reductions based on the DfT National Central Projection as outlined in the Strategic Framework for Road Safety. (*based on ONS population projections).

KSI Casualty Rate Trend 2000 - June 2018 and Projection to 2020				
Year	KSI Casualty Rates**		Index	
	Actual	Projection	Actual	Projection
2000	434			
2001	434			
2002	422			
2003	434			
2004	410			
2005	424			
2006	366			
2007	363			
2008	327			
2009	305			
2005-2009 Baseline	357		100	
2010	283	308	79	86
2011	283	294	79	82
2012	260	280	73	78
2013	243	267	68	75
2014	264	254	74	71
2015	239	242	67	68
2016	246	231	69	65
2017	283	220	79	62
Apr 2017-Mar 2018	290	218	81	61
Jul 2017-Jun 2018	296	215	83	60
2018		210		59
2019		200		56
2020		196		55

Notes: ** - KSI rates per 1,000,000 population

Index is based on 2005-2009 average



Progress Towards KSI Casualty Rate* Reduction Forecast by District			
KSI Casualty Rates* (Progress Towards KPI 11)			
District	Base	Jul 17 to Jun 18**	Vision 2020
Bolton	357	314	196
Bury	349	207	192
Manchester	480	370	264
Oldham	355	258	195
Rochdale	343	245	189
Salford	392	346	216
Stockport	275	265	151
Tameside	296	314	163
Trafford	269	290	148
Wigan	338	254	186
Greater Manchester	357	296	196

Index of Progress Towards KSI Casualty Rate* Reduction Forecast by District			
KSI Casualty Rates* (Progress Towards KPI 11)			
District	Base	Jul 17 to Jun 18**	Vision 2020
Bolton	100	88	55
Bury	100	59	55
Manchester	100	77	55
Oldham	100	73	55
Rochdale	100	71	55
Salford	100	88	55
Stockport	100	97	55
Tameside	100	106	55
Trafford	100	108	55
Wigan	100	75	55
Greater Manchester	100	83	55

Notes: Base = Average 2005-2009 = 100

* - KSI rates per 1,000,000 resident population

** - Uses figures provided by ONS for the mid-year estimate of population for 2016