

VISION 2020 FACTSHEET



DATA SOLUTIONS DEPARTMENT

GREATER MANCHESTER KSI CASUALTY STATISTICS

Latest 12 Months Data January 2016 to December 2016

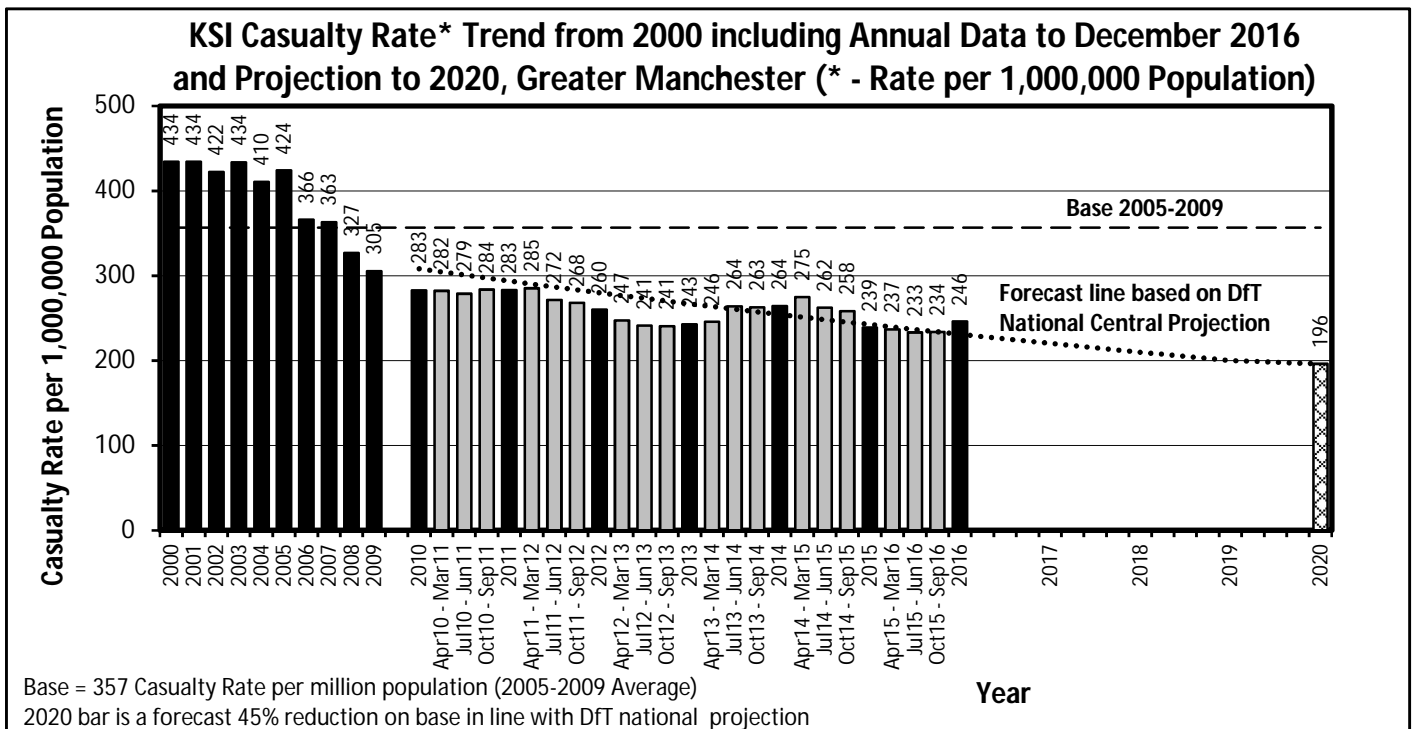
KSI Casualty Rates: Casualty Rate Trend 2000 - December 2016 and Projection to 2020

The table shows Greater Manchester KSI casualty rates* from 2000 - December 2016 and forecast casualty reductions based on the DfT National Central Projection as outlined in the Strategic Framework for Road Safety. (*based on ONS population projections).

KSI Casualty Rate Trend 2000 - December 2016 and Projection to 2020				
Year	KSI Casualty Rates**		Index	
	Actual	Projection	Actual	Projection
2000	434			
2001	434			
2002	422			
2003	434			
2004	410			
2005	424			
2006	366			
2007	363			
2008	327			
2009	305			
2005-2009 Baseline	357		100	
2010	283	308	79	86
2011	283	294	79	82
2012	260	280	73	78
2013	243	267	68	75
2014	264	254	74	71
2015	239	242	67	68
2016	246	231	69	65
2017		220		62
2018		210		59
2019		200		56
2020		196		55

Notes: ** - KSI rates per 1,000,000 population

Index is based on 2005-2009 average



Progress Towards KSI Casualty Rate* Reduction Forecast by District			
KSI Casualty Rates* (Progress Towards KPI 11)			
District	Base	Jan 16 to Dec 16**	Vision 2020
Bolton	357	302	196
Bury	349	208	192
Manchester	480	279	264
Oldham	355	251	195
Rochdale	343	327	189
Salford	392	265	216
Stockport	275	239	151
Tameside	296	194	163
Trafford	269	159	148
Wigan	338	199	186
Greater Manchester	357	246	196

Index of Progress Towards KSI Casualty Rate* Reduction Forecast by District			
KSI Casualty Rates* (Progress Towards KPI 11)			
District	Base	Jan 16 to Dec 16**	Vision 2020
Bolton	100	85	55
Bury	100	59	55
Manchester	100	58	55
Oldham	100	71	55
Rochdale	100	95	55
Salford	100	67	55
Stockport	100	87	55
Tameside	100	65	55
Trafford	100	59	55
Wigan	100	59	55
Greater Manchester	100	69	55

Notes: Base = Average 2005-2009 = 100

* - KSI rates per 1,000,000 resident population

** - Uses figures provided by ONS for the mid-year estimate of population for 2015